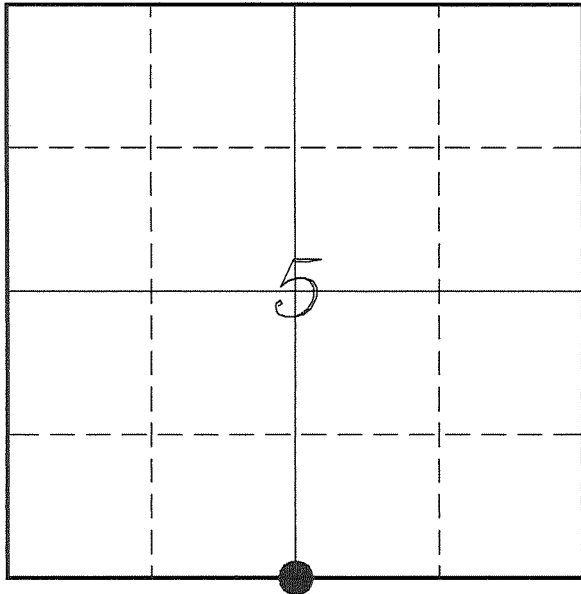


U. S. PUBLIC LAND SURVEY MONUMENT RECORD

**SECTION 5, T13N, R1W, TOWN OF UNION
VERNON COUNTY, WISCONSIN**



LOCATION OF LANDMARK

VERNON COUNTY COORDINATE SYSTEM	
Northing	174277.181
Easting	799192.909
Datum	NAD 1983 (2011)
Elevation	
Datum	
TYPE OF LANDMARK:	
Set Lunde Monument 4" Brass Capped Iron Pipe	
BEARINGS ARE REFERENCED TO:	
Vernon County Coordinates (Survey Grade)	

Witnesses: Laurence E Johns III
Larry Handschy

Eagle Ridge Surveying
PO Box 213
Wilton, Wisconsin

Date: 4 June 2016

Describe any record evidence, monument evidence, testimonial evidence or any other material evidence you considered and whether the monument was found or restored through acceptance of an obliterated evidence location.

No bearing trees of record were located.

There is no occupation in the area of this corner.

I determined the location for this corner using fences to the West that run from the NW Corner to just West of this location. Those fences are relatively straight. I also used fences to South that run to nearly the center of section. Again, these fences are relatively straight as well.

This location matches very well with Knower's survey and government notes. It also fits reasonably well with Sterling's survey. It is short as compared to Sterling, but my experience with retracing surveys by Sterling that his measurements are typically long.

I accepted this location as the best available evidence of the original government corner and set a Lunde Monument.

Describe or show any material discrepancy between the location of the restored corner and that of the corner previously restored or re-established.

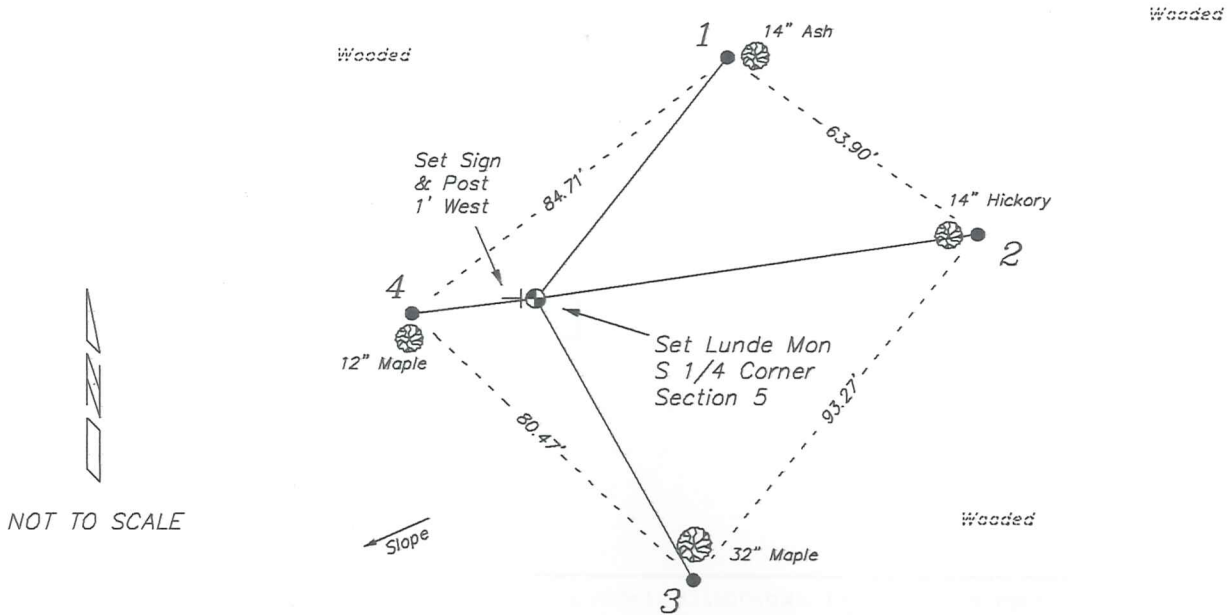
Alfred L Brown established this corner in January 1846.

Wm Knower was at this corner, in May 1888, during a survey in Section 5. He shows this corner as lost and re-establishes it at the mid-point.

C M Sterling was at this corner, in April 1891, during a survey in Section 8. He does not mention if he found the government corner or re-established the corner. He shows no new bearing trees.

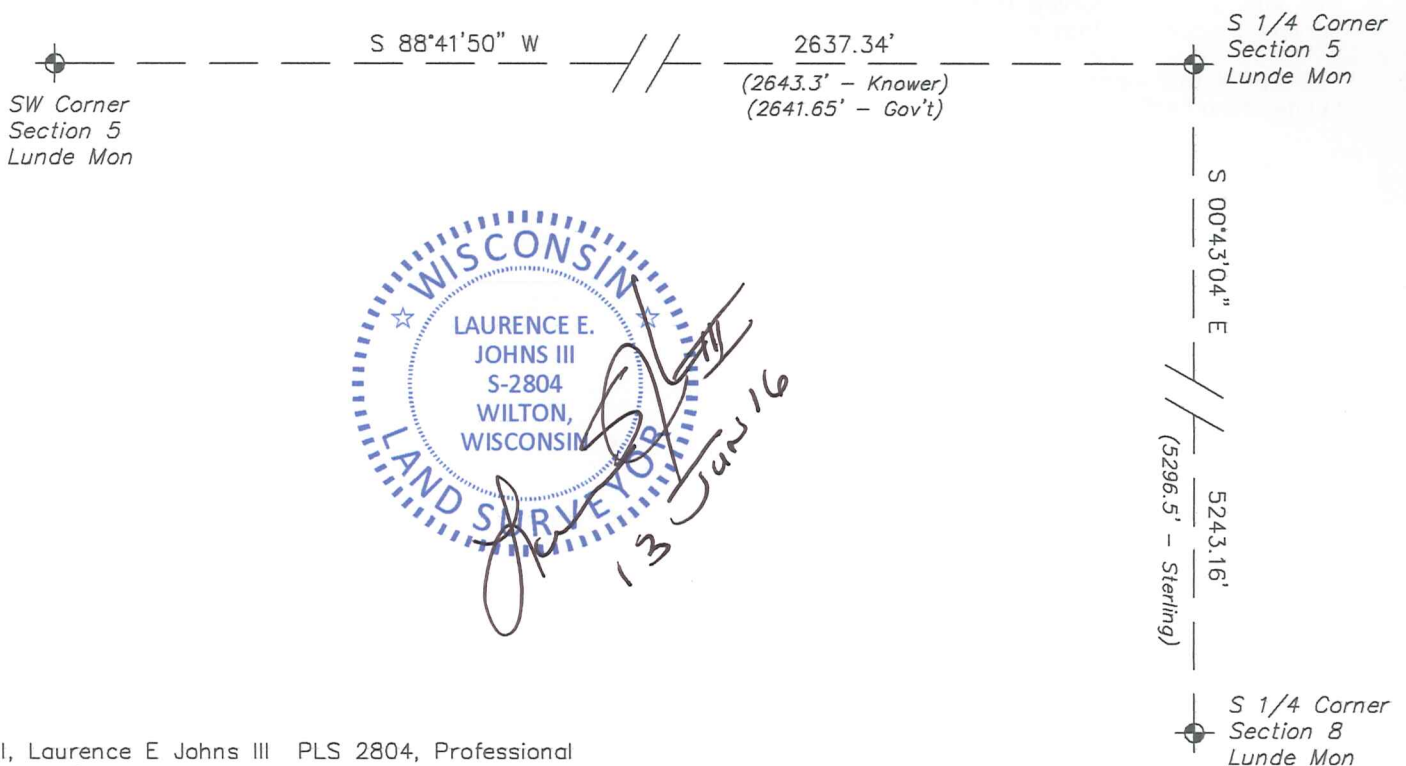
RECORD OF DURABLE WITNESS MONUMENTS

NO	DESCRIPTION	BEARING	DISTANCE
1	Set 3/4" x 18" Iron Rod 1' West of a 14" Ash	N 38°18'33" E	64.40'
2	Set 3/4" x 18" Iron Rod 1' East of a 14" Hickory	N 81°35'49" E	93.07'
3	Set 3/4" x 18" Iron Rod 1' South of a 32" Maple	S 29°18'54" E	66.98'
4	Set 3/4" x 18" Iron Rod 1' North of a 12" Maple	S 83°07'02" W	25.84'



PLAN VIEW DRAWING OF REFERENCE TIES

Map Showing Distance And Direction To Other Public Land Survey
Corners Used For Re-Establishing The Corner



I, Laurence E Johns III PLS 2804, Professional Land Surveyor, hereby certify that the corner location shown on this record was determined by me or under my direction and control, and that this U.S. Public Land Survey Monument Record is correct and complete to the best of my knowledge and belief.