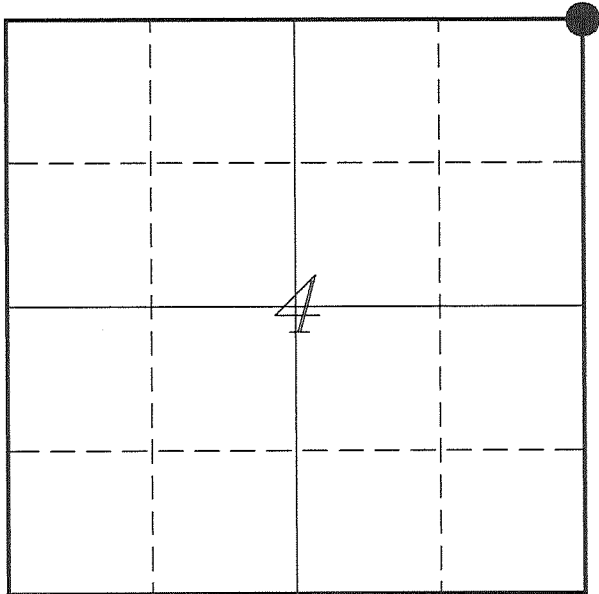


U. S. PUBLIC LAND SURVEY MONUMENT RECORD

SECTION 4, T13N, R1W, TOWN OF UNION
VERNON COUNTY, WISCONSIN



LOCATION OF LANDMARK

VERNON COUNTY COORDINATE SYSTEM	
Northing	179462.509
Easting	807011.900
Datum	NAD 1983 (2011)
Elevation	
Datum	
TYPE OF LANDMARK: Set Lunde Monument 4" Brass Capped Iron Pipe	
BEARINGS ARE REFERENCED TO: Vernon County Coordinates (Survey Grade)	

Witnesses: Laurence E Johns III
Al Hoff

Eagle Ridge Surveying
PO Box 213
Wilton, Wisconsin

Date: 3 February 2017

Describe any record evidence, monument evidence, testimonial evidence or any other material evidence you considered and whether the monument was found or restored through acceptance of an obliterated evidence location.

No bearing trees of record were located.

I found a Lunde Monument with associated warning sign as the location shown on Jasperson's tie sheet along with 3 of the 4 ties shown on his tie sheet. The elm tree along with the associated tie could not be found.

Jasperson shows that he found an existing 3/4" iron rod and accepted it as the NW Corner of Section 3. Chafer's survey shows this corner as the SW Corner of Section 34 and also shows an offset to the West for the NW Corner of Section 3. The 3/4" iron rod that was found by Jasperson is assumed to have been set by Chafer.

After measuring along the entire town line and along with occupation in the area, I determined that this monument does not represent the corner as shown by Jasperson but actually the SE Corner of Section 33 as shown on Chafer's survey.

The original government notes call for the NE Corner of Section 4 to be offset to the West at a distance of 52.74'. This would put this corner about 3' East of an existing fence corner. I felt that the fence corner was better evidence of the location of the corner than a distance.

I placed this corner on a straight line between the SE Corner of Section 32 and the SE Corner of Section 33 and on the East side of the existing fence corner post.

I accepted this location as the best available evidence of the original government corner.

Describe or show any material discrepancy between the location of the restored corner and that of the corner previously restored or re-established.

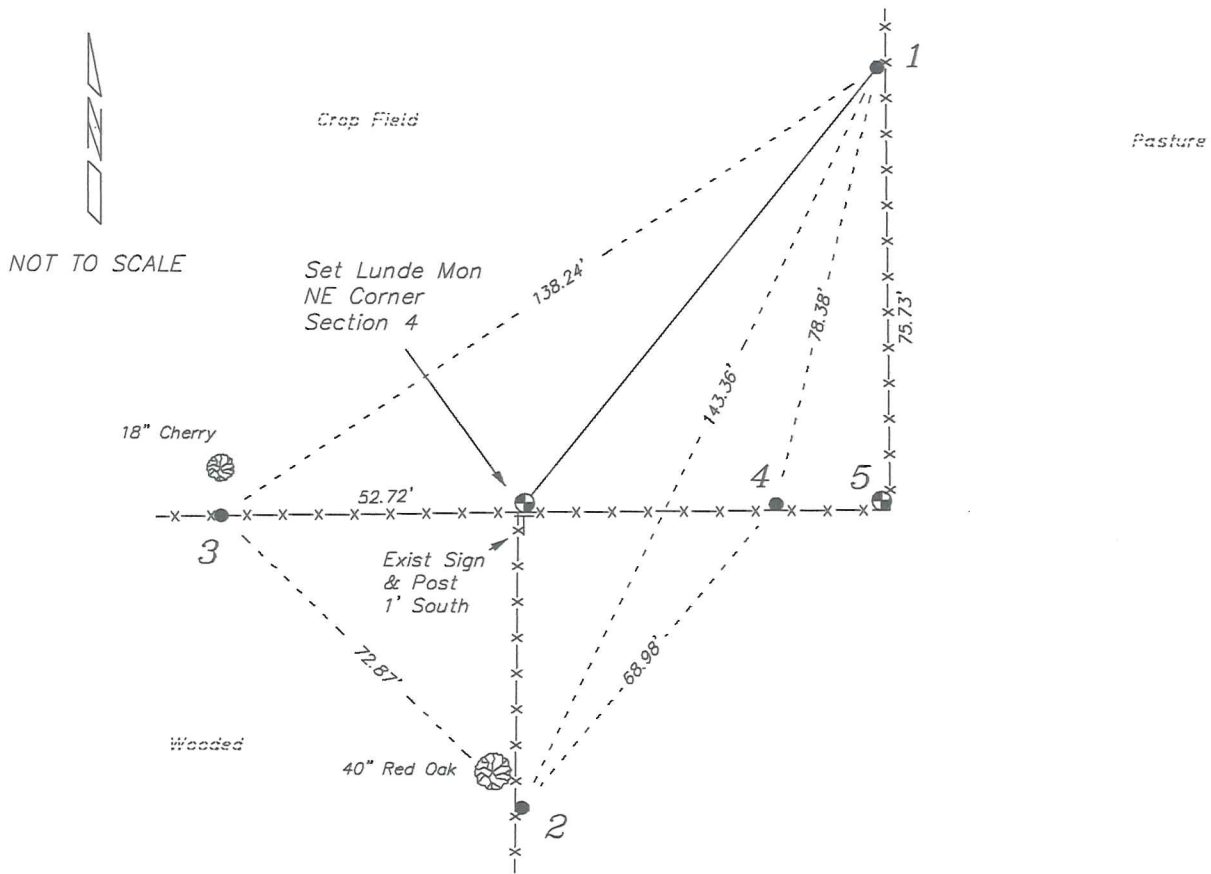
Alfred L Brown established this corner in December 1845.

C M Sterling was at this corner, in April 1891, during surveys in Sections 3 & 4. He does not show what he found at this corner.

Ronald Jasperson was at this corner, in June 2002. He shows that he found a 3/4" iron rod and replaced it with a Lunde Monument. He prepared a tie sheet for this corner.

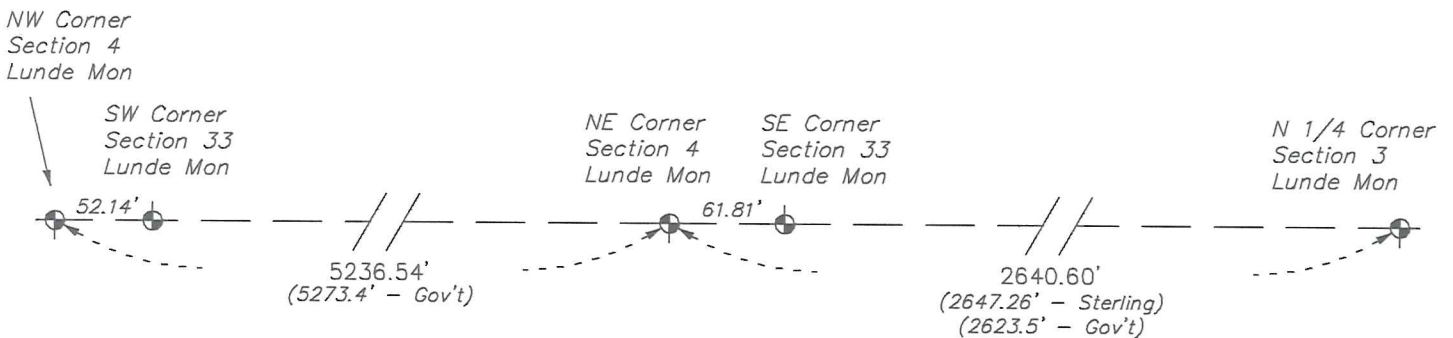
RECORD OF DURABLE WITNESS MONUMENTS

NO	DESCRIPTION	BEARING	DISTANCE
1	Set 3/4" x 18" Iron Rod In Field Fence	N 38°33'36" E	97.73'
2	Set 3/4" x 18" Iron Rod In Fence - 4' SE of a 40" Red Oak	S 00°25'20" W	53.17'
3	Set 3/4" x 18" Iron Rod In Fence - 2' South of a 18" Cherry	S 87°24'16" W	52.72'
4	Existing 3/4" Iron Rod Jasperson's Tie Sheet	S 89°58'43" E	43.57'
5	Lunde Monument SE Corner of Section 33	N 89°21'40" E	61.81' (58.74')

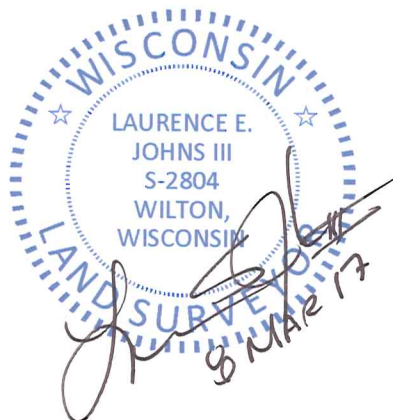


PLAN VIEW DRAWING OF REFERENCE TIES

Map Showing Distance And Direction To Other Public Land Survey
Corners Used For Re-Establishing The Corner



I, Laurence E Johns III PLS 2804, Professional Land Surveyor, hereby certify that the corner location shown on this record was determined by me or under my direction and control, and that this U.S. Public Land Survey Monument Record is correct and complete to the best of my knowledge and belief.



RECEIVED
 JUN 11 2002
 BY: *[Signature]*

VERNON COUNTY CERTIFIED U.S. PUBLIC LAND SURVEY MONUMENT RECORD

INSTRUCTIONS: THIS RECORD SHALL SHOW THE LOCATION OF THE CORNER AND SHALL INCLUDE ALL OF THE FOLLOWING ELEMENTS (A-I)

(A) IDENTIFY THE CORNER BY REFERENCE TO THE U.S. PUBLIC LAND SURVEY SYSTEM

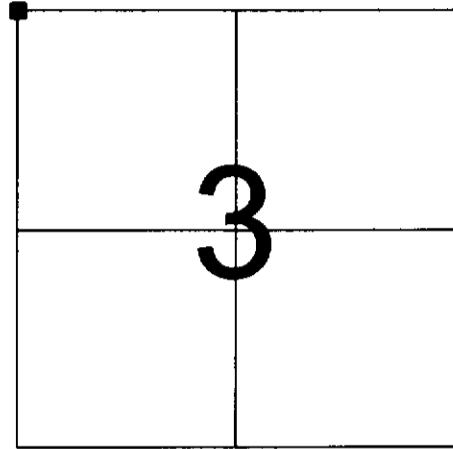
■ = CORNER MONUMENT RESTORED

WITNESSES TO CORNER LOCATION:

- 1) RONALD D. JASPERSON
- 2) JASON L. CANCE

VERNON COUNTY COORDINATES

NORTHING: 179,463.07
 EASTING: 807,073.86



SECTION 3, TOWN 13 NORTH, RANGE 1 WEST

(B) DESCRIBE ANY RECORD EVIDENCE, MONUMENT EVIDENCE, OCCUPATIONAL EVIDENCE, TESTIMONIAL EVIDENCE OR ANY OTHER MATERIAL EVIDENCE YOU CONSIDERED, AND WHETHER THE MONUMENT WAS FOUND OR PLACED.

FOUND 3/4" BAR WITH NO TIES. ACCEPTED CORNER AT PRESENT LOCATION.

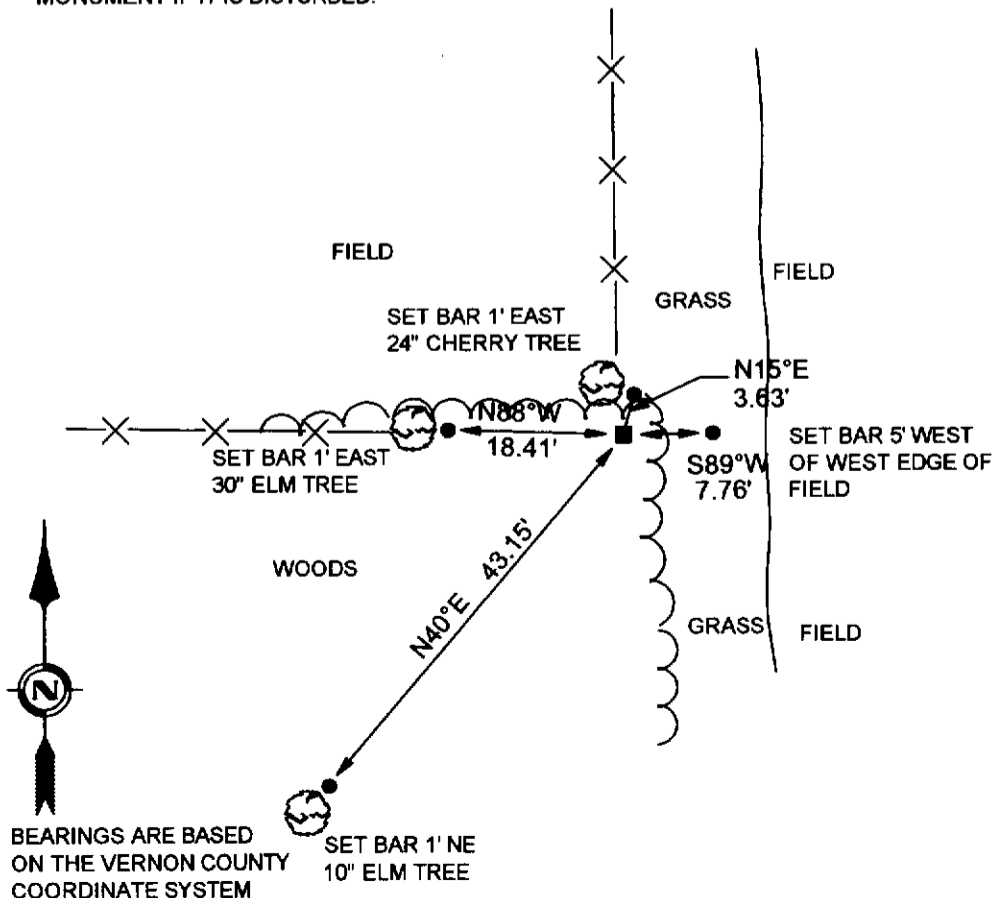
(C) IN THE PLAN VIEW DRAWING BELOW, PROVIDE REFERENCE TIES TO AT LEAST 4 WITNESS MONUMENTS OR, IF THE LOCATION IS WITHIN A MUNICIPALITY, TO AT LEAST 2 WITNESS MONUMENTS. (WITNESS MONUMENTS SHALL BE MADE OF CONCRETE, NATURAL STONE, IRON, OR OTHER EQUALLY DURABLE MATERIAL.) DESCRIBE WITNESS MONUMENTS.

(D) SHOW A PLAN VIEW DRAWING, DEPICTING THE RELEVANT MONUMENTS AND REFERENCE TIES, WHICH IS SUFFICIENTLY DETAILED TO ENABLE ACCURATE RELOCATION OF THE CORNER MONUMENT IF IT IS DISTURBED.

LEGEND

3/4" REBAR W / 1 1/2" ALUMINUM CAP STAMPED "SURVEY MARKER"

● 3/4" REBAR



(E) DESCRIBE ANY MATERIAL DISCREPANCY BETWEEN THE LOCATION OF THE CORNER AS RESTORED OR REESTABLISHED AND THE LOCATION OF THAT CORNER AS PREVIOUSLY RESTORED OR REESTABLISHED BY DISTANCE AND DIRECTION. SHOW THE DISCREPANCY ON THE PLAN VIEW DRAWING UNDER (D), ABOVE. SHOW THE DISTANCES BETWEEN THE CORNER AS PREVIOUSLY RESTORED OR REESTABLISHED AND (1) THE CORNER AS RESTORED OR REESTABLISHED, AND (2) TO AT LEAST 2 OF THE WITNESS MONUMENTS AS SHOWN ON THE DRAWING IN (D), ABOVE.

N/A

(F) WAS THE CORNER RESTORED THROUGH ACCEPTANCE OF (1) AN OBLITERATED EVIDENCE LOCATION, OR (2) A FOUND PERPETUATED LOCATION?

N/A

(G & H) WAS THE CORNER REESTABLISHED THROUGH LOST CORNER PROPORTIONATE METHODS? IF SO SHOW THE METHOD, INCLUDING THE DIRECTIONS AND DISTANCES TO OTHER PUBLIC LAND SURVEY CORNERS USED AS EVIDENCE OR USED FOR PROPORTIONING IN DETERMINING THE CORNER LOCATION.

N/A

AFFIX LAND SURVEYOR SEAL

(I) I, RONALD D. JASPERSON, CERTIFY THAT THE LOCATION SHOWN ON THIS RECORD WAS DETERMINED BY ME OR UNDER MY DIRECTION AND CONTROL AND THAT THIS U.S. PUBLIC LAND SURVEY MONUMENT RECORD IS CORRECT AND COMPLETE TO THE BEST OF MY KNOWLEDGE AND BELIEF.

Ronald D. Jaspersen 6-3-02
SIGNATURE DATE

