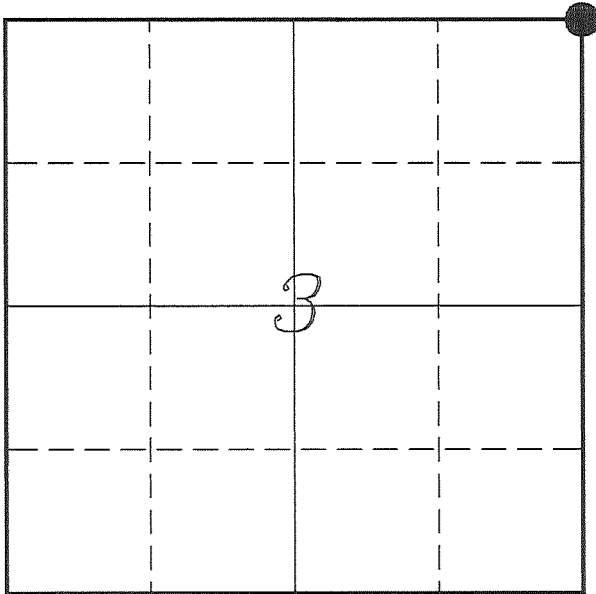


U. S. PUBLIC LAND SURVEY MONUMENT RECORD

**SECTION 3, T13N, R1W, TOWN OF UNION
VERNON COUNTY, WISCONSIN**



LOCATION OF LANDMARK

<i>VERNON COUNTY COORDINATE SYSTEM</i>	
<i>Northing</i>	<i>179448.652</i>
<i>Easting</i>	<i>812260.494</i>
<i>Datum</i>	<i>NAD 1983 (2011)</i>
<i>Elevation</i>	
<i>Datum</i>	
<i>TYPE OF LANDMARK:</i>	
<i>Set Lunde Monument</i>	
<i>4" Brass Capped</i>	
<i>Iron Pipe</i>	
<i>BEARINGS ARE REFERENCED TO:</i>	
<i>Vernon County Coordinates</i>	
<i>(Survey Grade)</i>	

Witnesses: Laurence E Johns III

Eagle Ridge Surveying
PO Box 213
Wilton, Wisconsin

Date: 23 February 2017

Describe any record evidence, monument evidence, testimonial evidence or any other material evidence you considered and whether the monument was found or restored through acceptance of an obliterated evidence location.

No bearing trees of record were located.

I found no record of this corner being used since Sterling's survey.

I re-established this corner by intersecting the fence running to the South and on the line between the SE and the S 1/4 Corners of Section 34.

This location falls about 3' South of an old fence corner. It is also located 82.38' West of the SE Corner of Section 34 instead of the recorded offset of 91.74'. I feel that the current well established occupation to be better support of this location than the government distance.

I placed a Lunde Monument at this location.

Describe or show any material discrepancy between the location of the restored corner and that of the corner previously restored or re-established.

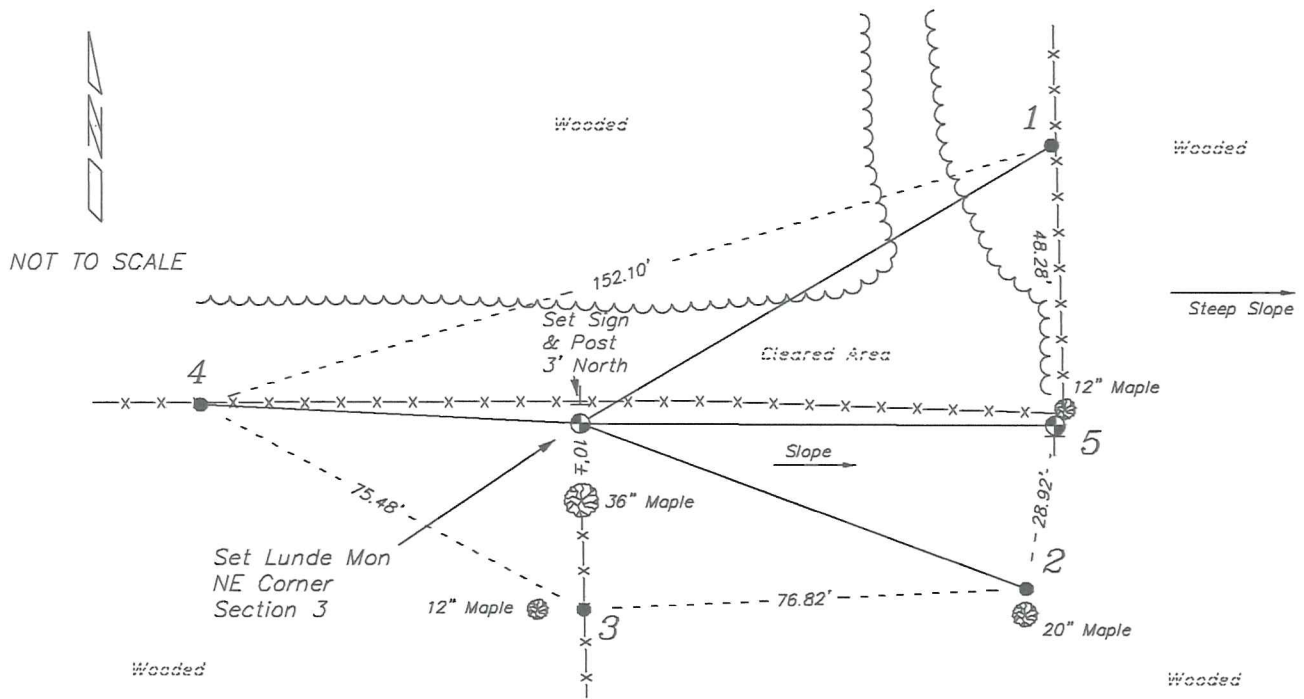
Alfred L Brown established this corner in December 1845.

Wm Knower was at this corner, in November 1887, during a survey in Section 2. He shows this corner as being offset from the SE Corner of Section 34 at a distance of 139 links.

CM Sterling was at this corner, in April 1891, during a survey in Section 3. He does not show this corner as being recovered or established.

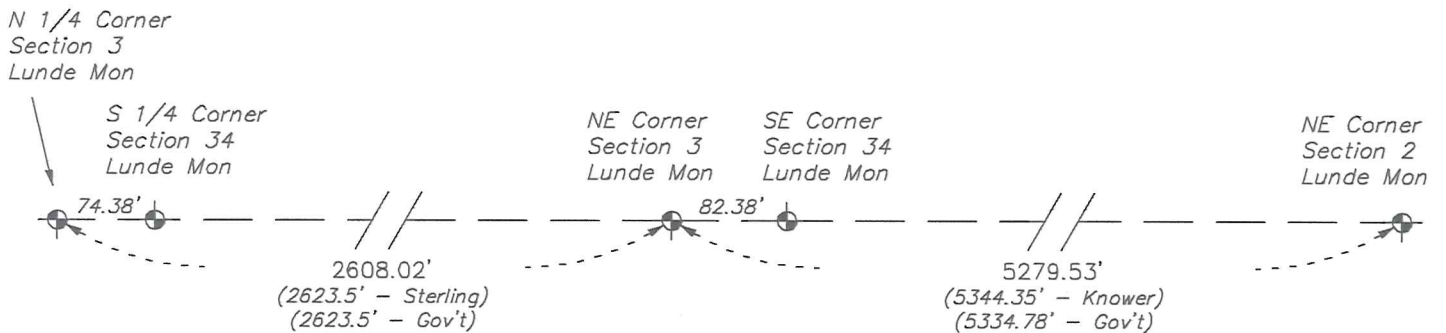
RECORD OF DURABLE WITNESS MONUMENTS

NO	DESCRIPTION	BEARING	DISTANCE
1	Set 3/4" x 18" Iron Rod In Fence Line	N 58°56'35" E	92.81'
2	Set 3/4" x 18" Iron Rod 2' North of a 20" Maple	S 69°34'39" E	82.50'
3	Set 3/4" x 18" Iron Rod In Fence - 4' East of a 12" Maple	S 01°01'29" E	32.50'
4	Set 3/4" x 18" Iron Rod In Fence Line	N 87°10'33" W	65.98'
5	Lunde Monument SE Corner - Section 34	S 89°47'04" E	82.38' (91.74')



PLAN VIEW DRAWING OF REFERENCE TIES

Map Showing Distance And Direction To Other Public Land Survey
Corners Used For Re-Establishing The Corner



I, Laurence E Johns III PLS 2804, Professional Land Surveyor, hereby certify that the corner location shown on this record was determined by me or under my direction and control, and that this U.S. Public Land Survey Monument Record is correct and complete to the best of my knowledge and belief.

