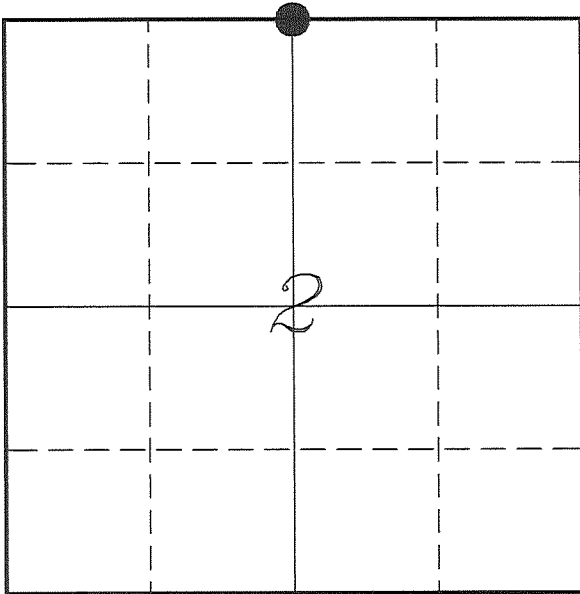


**U. S. PUBLIC LAND SURVEY MONUMENT RECORD**

**SECTION 2, T13N, R1W, TOWN OF UNION  
VERNON COUNTY, WISCONSIN**



*LOCATION OF LANDMARK*

<i>VERNON COUNTY COORDINATE SYSTEM</i>	
<i>Northing</i>	<i>179438.175</i>
<i>Easting</i>	<i>814890.450</i>
<i>Datum</i>	<i>NAD 1983 (2011)</i>
<i>Elevation</i>	
<i>Datum</i>	
<i>TYPE OF LANDMARK:</i>	
<i>Set Lunde Monument 4" Brass Capped Iron Pipe</i>	
<i>BEARINGS ARE REFERENCED TO:</i>	
<i>Vernon County Coordinates (Survey Grade)</i>	

*Witnesses:* Laurence E Johns III  
Al Hoff

*Eagle Ridge Surveying*  
PO Box 213  
Wilton, Wisconsin

*Date:* 28 February 2017

*Describe any record evidence, monument evidence, testimonial evidence or any other material evidence you considered and whether the monument was found or restored through acceptance of an obliterated evidence location.*

No bearing trees of record were located.

There is well established occupation at this corner that supports the offset distance shown on Knower's survey.

I re-established this corner on line with the S 1/4 and SW Corners of Section 35 and at the distance called for on Knower's survey from the NE Corner of Section 2. This location is 1' East and 3' South of the fence corner.

I accepted this as the best available evidence of Knower's corner and placed a Lunde Monument.

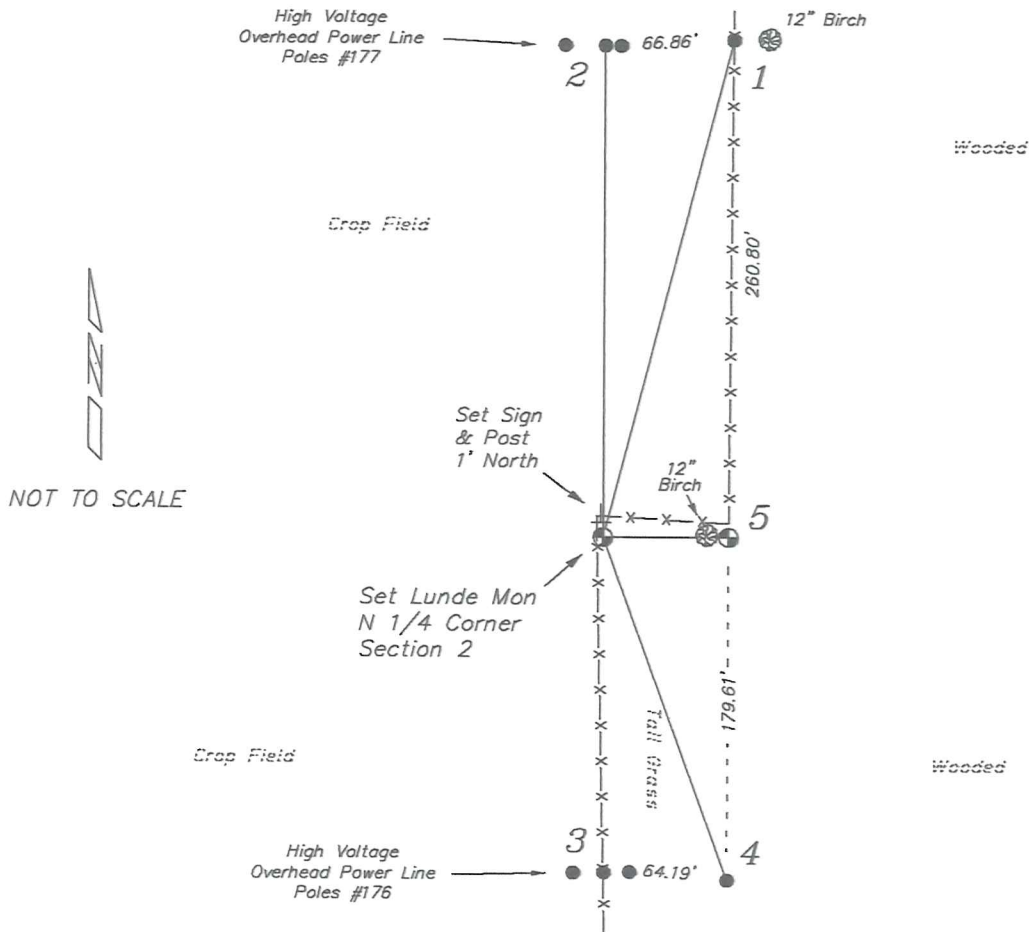
*Describe or show any material discrepancy between the location of the restored corner and that of the corner previously restored or re-established.*

This corner was not established during the original government survey.

Wm Knower established this corner, in November 1887, during a survey in Section 2. He shows this corner as being the government corner and being offset from the S 1/4 Corner of Section 35 at a distance of 97 links.

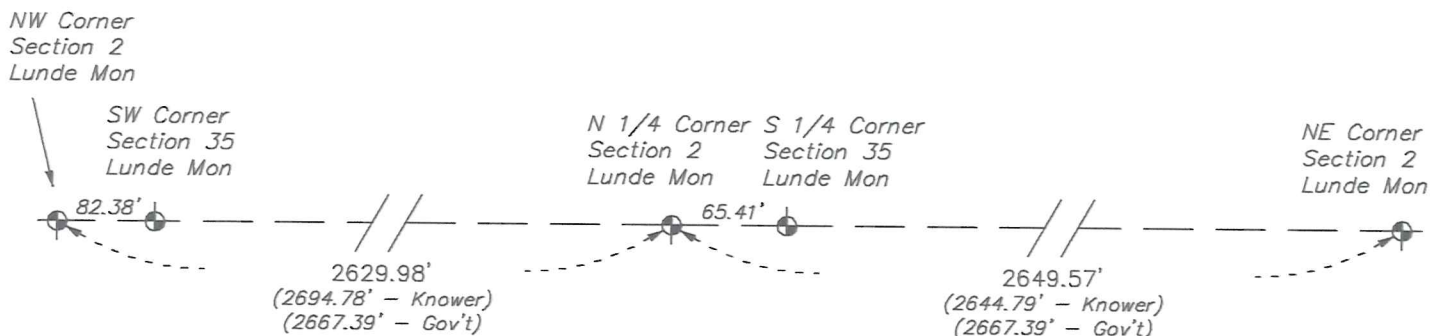
## RECORD OF DURABLE WITNESS MONUMENTS

NO	DESCRIPTION	BEARING	DISTANCE
1	Set 3/4" x 18" Iron Rod In Fence - 4' West of a 12" Birch	N 14°28'50" E	269.08'
2	Set 3/4" x 18" Iron Rod 1' West of East Power Pole #177	N 00°06'32" E	257.55'
3	Set 3/4" x 18" Iron Rod In Fence - Between Power Poles #176	S 00°21'02" E	176.05'
4	Set 3/4" x 18" Iron Rod Edge of Treeline of Small Trees	S 19°54'36" E	191.31'
5	Lunde Monument S 1/4 Corner - Section 35	S 89°46'17" E	65.41' (64.02')



## PLAN VIEW DRAWING OF REFERENCE TIES

Map Showing Distance And Direction To Other Public Land Survey Corners Used For Re-Establishing The Corner



I, Laurence E Johns III PLS 2804, Professional Land Surveyor, hereby certify that the corner location shown on this record was determined by me or under my direction and control, and that this U.S. Public Land Survey Monument Record is correct and complete to the best of my knowledge and belief.

