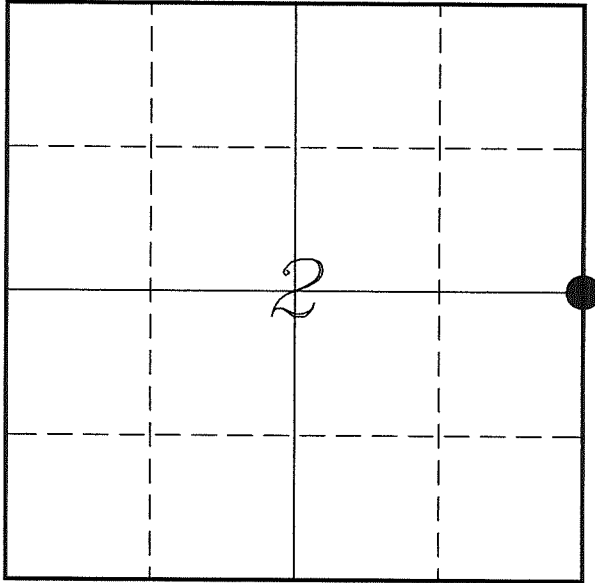


U. S. PUBLIC LAND SURVEY MONUMENT RECORD

*SECTION 2, T13N, R1W, TOWN OF UNION
VERNON COUNTY, WISCONSIN*



<i>VERNON COUNTY COORDINATE SYSTEM</i>	
<i>Northing</i>	<i>177164.124</i>
<i>Easting</i>	<i>817561.717</i>
<i>Datum</i>	<i>NAD 1983 (2011)</i>
<i>Elevation</i>	
<i>Datum</i>	
<i>TYPE OF LANDMARK:</i>	
<i>Set Lunde Monument 4" Brass Capped Iron Pipe</i>	
<i>BEARINGS ARE REFERENCED TO:</i>	
<i>Vernon County Coordinates (Survey Grade)</i>	

LOCATION OF LANDMARK

Witnesses: Laurence E Johns III
Al Hoff

*Eagle Ridge Surveying
PO Box 213
Wilton, Wisconsin*

Date: April 2018

Describe any record evidence, monument evidence, testimonial evidence or any other material evidence you considered and whether the monument was found or restored through acceptance of an obliterated evidence location.

No bearing trees of record were located.

Found the iron rod set by Fauerbach and two of his ties.

This location is based on a 1" iron pipe used by Janiak in 1984. He does not mention if he set or found the pipe.

This location would be 13.3' North and 6' West of the proratinal location.

There have been a few surveys based on this location and I have not found any evidence that would contradict the location.

I accepted the location of the iron rod and replaced it with a Lunde Monument.

Describe or show any material discrepancy between the location of the restored corner and that of the corner previously restored or re-established.

Alfred L Brown established this corner in January 1846.

Wm Knower was at this corner, in November thru December 1887, during surveys in Sections 1 & 2, He shows this corner as lost.

Wm Knower was at this corner again, in November 1899, during a survey in Section 1. He shows this corner as the government corner.

Matthew Janiak was at this corner, in August 1984, during a survey in Section 1. He shows a 1" iron pipe at this corner, does not mention found or set.

Richard Blakeslee was at this corner, in January 2007, during a survey in Section 1. He shows he found a 1" iron pipe 'as shown by Janiak' and prepared a tie sheet.

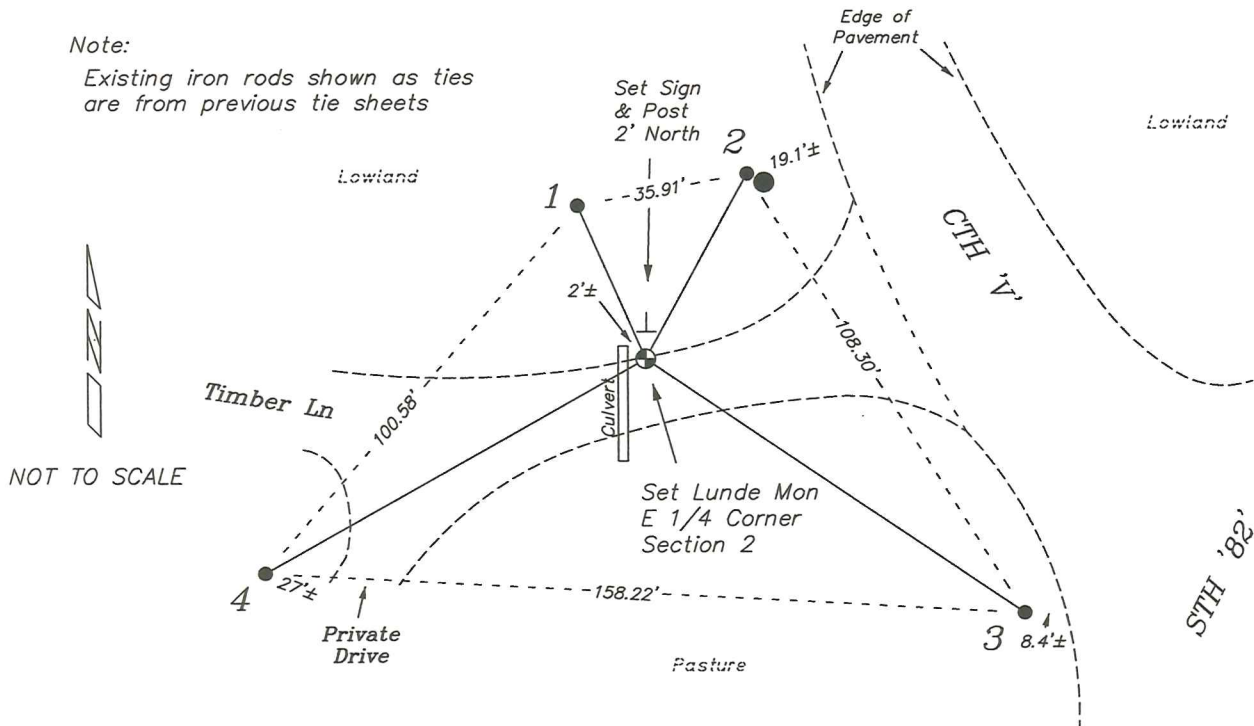
Gregory Fauerbach was at this corner, in September 2015, He re-established the corner from Blakeslee's tie sheet and set a 3/4" iron rod and prepared a new tie sheet.

RECORD OF DURABLE WITNESS MONUMENTS

NO	DESCRIPTION	BEARING	DISTANCE
1	Set 3/4" x 18" Iron Rod 1' East of Fence Corner Post	N 23°51'48" W	34.92'
2	Existing 3/4" Iron Rod 1' North of a Power Pole 3J2E5	N 28°44'22" E (N 28°46'13" E)	44.00' (43.95')
3	Set 3/4" x 18" Iron Rod 1' East of a Stop Sign	S 55°55'49" E	94.96'
4	Existing 3/4" Iron Rod 1' East of Fire Sign Address E16057	S 60°37'35" W (S 60°36'44" W)	91.03' (90.98')

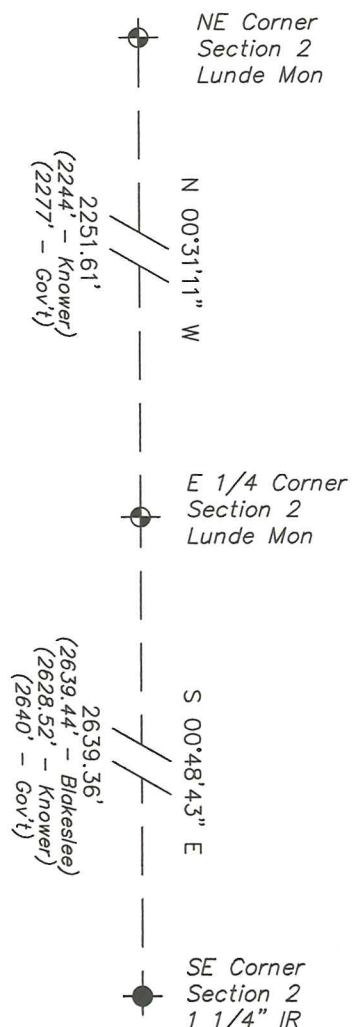
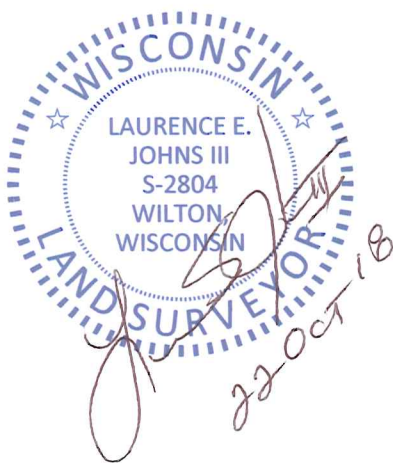
Note:

Existing iron rods shown as ties
are from previous tie sheets



PLAN VIEW DRAWING OF REFERENCE TIES

Map Showing Distance And Direction To Other Public Land Survey
Corners Used For Re-Establishing The Corner



I, Laurence E Johns III PLS 2804, Professional Land Surveyor, hereby certify that the corner location shown on this record was determined by me or under my direction and control, and that this U.S. Public Land Survey Monument Record is correct and complete to the best of my knowledge and belief.

VERNON COUNTY CERTIFIED U.S. PUBLIC LAND SURVEY MONUMENT RECORD

INSTRUCTIONS: THIS RECORD SHALL SHOW THE LOCATION OF THE CORNER AND SHALL INCLUDE ALL OF THE FOLLOWING ELEMENTS (A-I)

3/4" Ø REBAR X 18" LONG SET

(A) IDENTIFY THE CORNER BY REFERENCE TO THE U.S. PUBLIC LAND SURVEY SYSTEM

**SELY ± 6'
FROM CULVERT
INLET.**

■ = CORNER MONUMENT RESTORED

WITNESSES TO CORNER LOCATION:

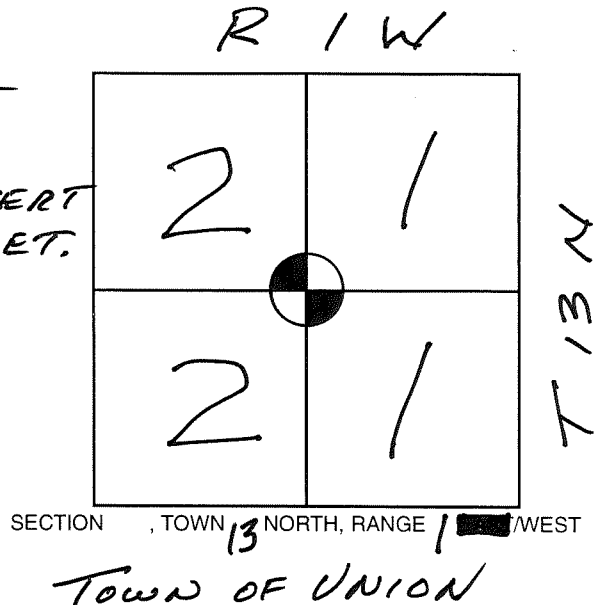
- 1)
- 2)
- 3)

STATE PLANE COORDINATES (WISCONSIN SOUTH ZONE)

NORTHING:
EASTING:

VERNON COUNTY COORDINATES

NORTHING:
EASTING:



(B) DESCRIBE ANY RECORD EVIDENCE, MONUMENT EVIDENCE, OCCUPATIONAL EVIDENCE, TESTIMONIAL EVIDENCE OR ANY OTHER MATERIAL EVIDENCE YOU CONSIDERED, AND WHETHER THE MONUMENT WAS FOUND OR PLACED.

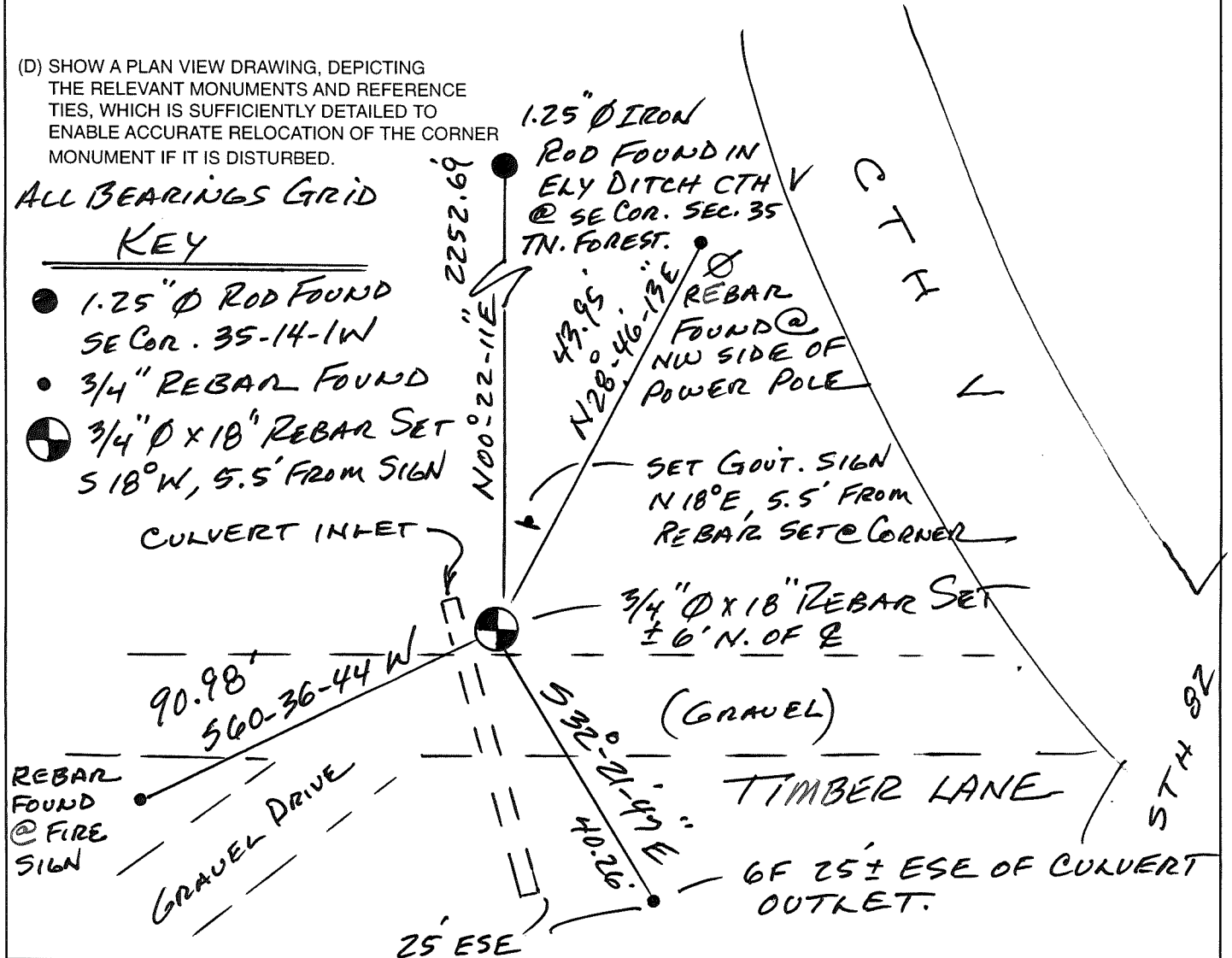
PREVIOUS TIE SHEET BY RICHARD BLAKESLEE DATED 1-27-07 SHOWS 1" PIPE @ CORNER. SUBSEQUENT CULVERT REPLACEMENT DESTROYED THE PIPE. I SET A 3/4" REBAR FROM TIES FOUND. I ADDED A REFERENCE TIE AND SET A SIGN.

(C) IN THE PLAN VIEW DRAWING BELOW, PROVIDE REFERENCE TIES TO AT LEAST 4 WITNESS MONUMENTS OR, IF THE LOCATION IS WITHIN A MUNICIPALITY, TO AT LEAST 2 WITNESS MONUMENTS. (WITNESS MONUMENTS SHALL BE MADE OF CONCRETE, NATURAL STONE, IRON, OR OTHER EQUALLY DURABLE MATERIAL.) DESCRIBE WITNESS MONUMENTS.

(D) SHOW A PLAN VIEW DRAWING, DEPICTING THE RELEVANT MONUMENTS AND REFERENCE TIES, WHICH IS SUFFICIENTLY DETAILED TO ENABLE ACCURATE RELOCATION OF THE CORNER MONUMENT IF IT IS DISTURBED.

**ALL BEARINGS GRID
KEY**

- 1.25" Ø ROD FOUND SE COR. 35-14-1W
- 3/4" REBAR FOUND
- ⊙ 3/4" Ø X 18" REBAR SET S 18° W, 5.5' FROM SIGN



(E) DESCRIBE ANY MATERIAL DISCREPANCY BETWEEN THE LOCATION OF THE CORNER AS RESTORED OR REESTABLISHED AND THE LOCATION OF THAT CORNER AS PREVIOUSLY RESTORED OR REESTABLISHED BY DISTANCE AND DIRECTION. SHOW THE DISCREPANCY ON THE PLAN VIEW DRAWING UNDER (D), ABOVE. SHOW THE DISTANCES BETWEEN THE CORNER AS PREVIOUSLY RESTORED OR REESTABLISHED AND (1) THE CORNER AS RESTORED OR REESTABLISHED, AND (2) TO AT LEAST 2 OF THE WITNESS MONUMENTS AS SHOWN ON THE DRAWING IN (D), ABOVE.

NONE

(F) WAS THE CORNER RESTORED THROUGH ACCEPTANCE OF (1) AN OBLITERATED EVIDENCE LOCATION, OR (2) A FOUND PERPETUATED LOCATION?

(2)

(G & H) WAS THE CORNER REESTABLISHED THROUGH LOST CORNER PROPORTIONATE METHODS? IF SO SHOW THE METHOD, INCLUDING THE DIRECTION AND DISTANCES TO OTHER PUBLIC LAND SURVEY CORNERS USED AS EVIDENCE OR USED FOR PROPORTIONING IN DETERMINING THE CORNER LOCATION.

No.

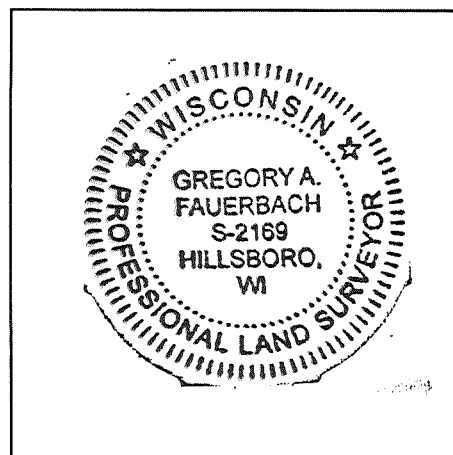
AFFIX LAND SURVEYOR SEAL

(I) I, GREGORY A. FAUERBACH CERTIFY THAT THE LOCATION SHOWN ON THIS RECORD WAS DETERMINED BY ME OR UNDER MY DIRECTION AND CONTROL AND THAT THIS U.S. PUBLIC LAND SURVEY MONUMENT RECORD IS CORRECT AND COMPLETE TO THE BEST OF MY KNOWLEDGE AND BELIEF.

Gregory A. Fauerbach 9-23-15

SIGNATURE

DATE



53315
54715

VERNON COUNTY CERTIFIED U.S. PUBLIC LAND SURVEY MONUMENT RECORD

INSTRUCTIONS: THIS RECORD SHALL SHOW THE LOCATION OF THE CORNER AND SHALL INCLUDE ALL OF THE FOLLOWING ELEMENTS (A-I)

(A) IDENTIFY THE CORNER BY REFERENCE TO THE U.S. PUBLIC LAND SURVEY SYSTEM

■ = CORNER MONUMENT RESTORED

WITNESSES TO CORNER LOCATION:

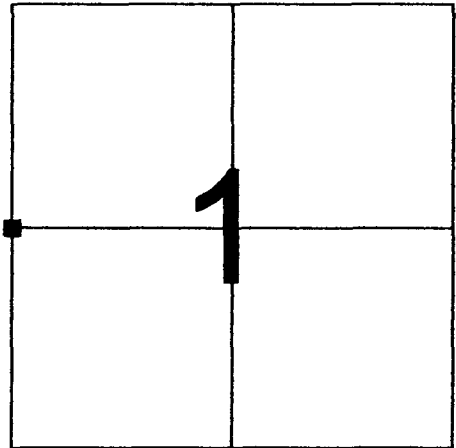
- 1) RICHARD BLAKESLEE
- 2) JOSH MURPHY
- 3) IVAN YODER

VERNON COUNTY COORDINATES

NORTHING:

EASTING:

RECEIVED
JAN 26 2007
S. Jackson



SECTION 1, TOWN 13 NORTH, RANGE 1 WEST

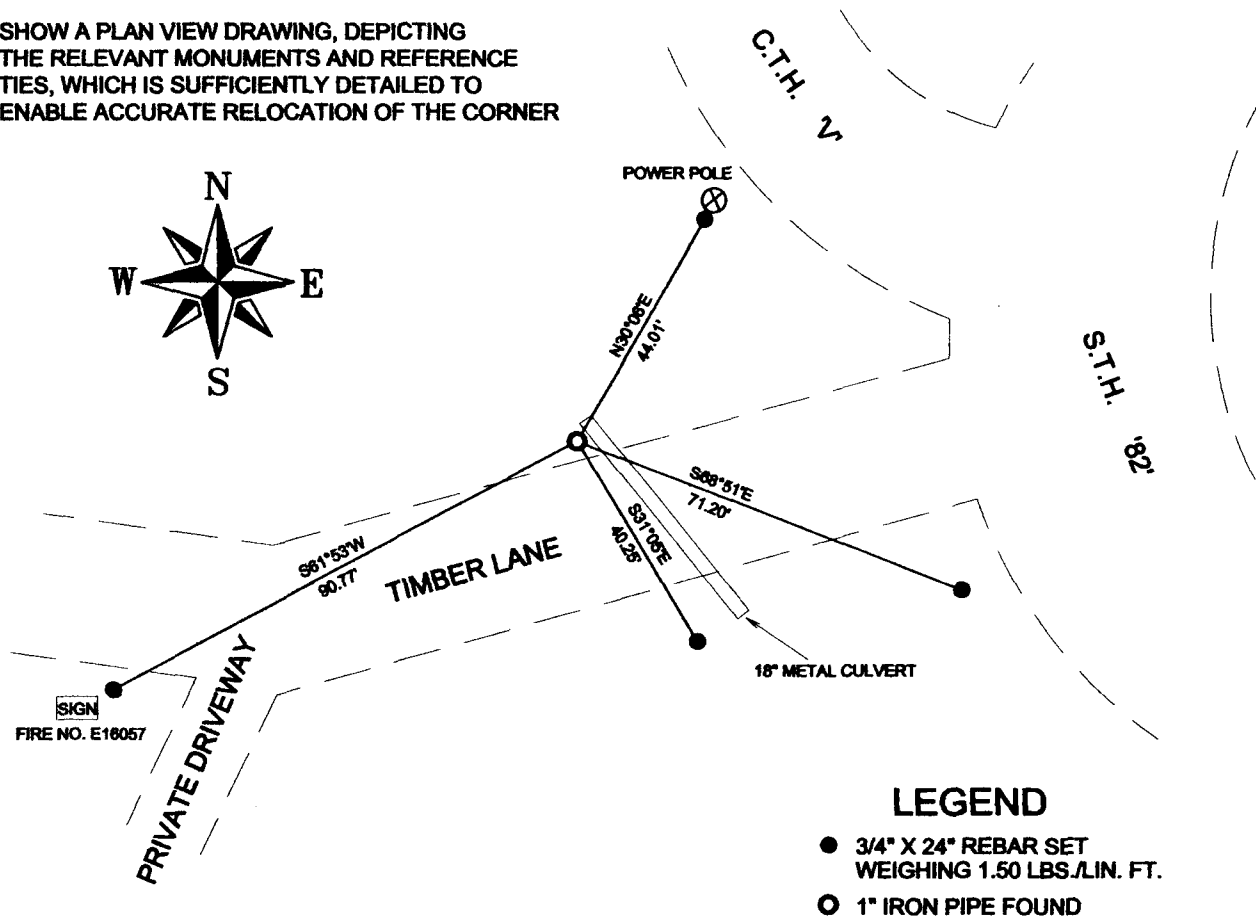
(B) DESCRIBE ANY RECORD EVIDENCE, MONUMENT EVIDENCE, OCCUPATIONAL EVIDENCE, TESTIMONIAL EVIDENCE OR ANY OTHER MATERIAL EVIDENCE YOU CONSIDERED, AND WHETHER THE MONUMENT WAS FOUND OR PLACED.

RESEARCHED ALL OF VERNON COUNTY SURVEY RECORDS REGARDING THIS CORNER. FOUND RECORD OF CORNER BEING CONSIDERED LOST IN VOLUME 1, PAGE 311 AS ENTRY NO. 411 DATED 1887. AT THAT TIME COUNTY SURVEYOR WM. KNOWER ESTABLISHED A NEW CORNER AND MADE TWO WITNESS TREES. FOUND RECORD OF THIS CORNER BEING USED IN VOLUME 2, PAGE 37 AS ENTRY NO. 69 IN 1899. COUNTY SURVEYOR WM. KNOWER USED THIS CORNER TO ESTABLISH THE CENTER 1/4 CORNER OF SECTION 1 AND OTHER CORNERS IN SECTION 1 AT THAT TIME. WE DID NOT FIND ANY EVIDENCE OF ANY WITNESS TREES ADJACENT TO THIS CORNERS LOCATION. WE DID FIND A 1" IRON PIPE ORIGIN UNKNOWN AS SHOWN ON A PLAT OF SURVEY DONE BY MATTHEW JANIAC IN 1984. WE ACCEPTED THIS FOUND 1" PIPE AS BEING THE CORNER.

NOTE: WE FOUND THE BEARING TREE AT THE CENTER 1/4 CORNER OF SECTION 1 AS RECORDED IN WM. KNOWER'S SURVEY NOTES OF HIS 1899 SURVEY.

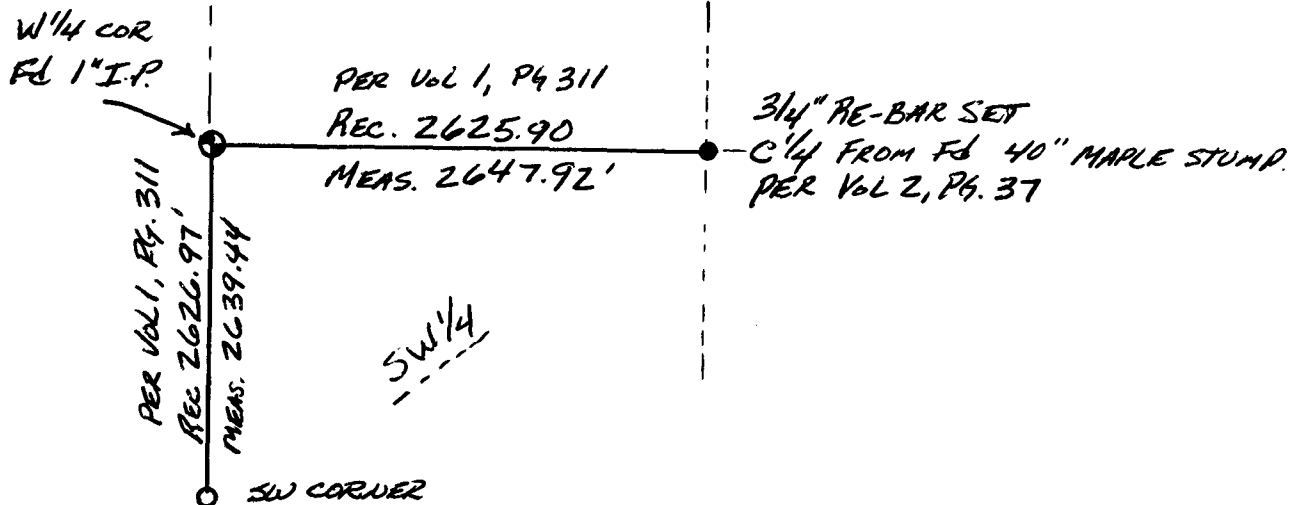
(C) IN THE PLAN VIEW DRAWING BELOW, PROVIDE REFERENCE TIES TO AT LEAST 4 WITNESS MONUMENTS OR, IF THE LOCATION IS WITHIN A MUNICIPALITY, TO AT LEAST 2 WITNESS MONUMENTS. (WITNESS MONUMENTS SHALL BE MADE OF CONCRETE, NATURAL STONE, IRON, OR OTHER EQUALLY DURABLE MATERIAL.) DESCRIBE WITNESS MONUMENTS.

(D) SHOW A PLAN VIEW DRAWING, DEPICTING THE RELEVANT MONUMENTS AND REFERENCE TIES, WHICH IS SUFFICIENTLY DETAILED TO ENABLE ACCURATE RELOCATION OF THE CORNER



LEGEND

- 3/4" X 24" REBAR SET WEIGHING 1.50 LBS./LIN. FT.
- 1" IRON PIPE FOUND



(E) DESCRIBE ANY MATERIAL DISCREPANCY BETWEEN THE LOCATION OF THE CORNER AS RESTORED OR REESTABLISHED AND THE LOCATION OF THAT CORNER AS PREVIOUSLY RESTORED OR REESTABLISHED BY DISTANCE AND DIRECTION. SHOW THE DISCREPANCY ON THE PLAN VIEW DRAWING UNDER (D), ABOVE. SHOW THE DISTANCES BETWEEN THE CORNER AS PREVIOUSLY RESTORED OR REESTABLISHED AND (1) THE CORNER AS RESTORED OR REESTABLISHED, AND (2) TO AT LEAST 2 OF THE WITNESS MONUMENTS AS SHOWN ON THE DRAWING IN (D), ABOVE.

(F) WAS THE CORNER RESTORED THROUGH ACCEPTANCE OF (1) AN OBLITERATED EVIDENCE LOCATION, OR (2) A FOUND PERPETUATED LOCATION?

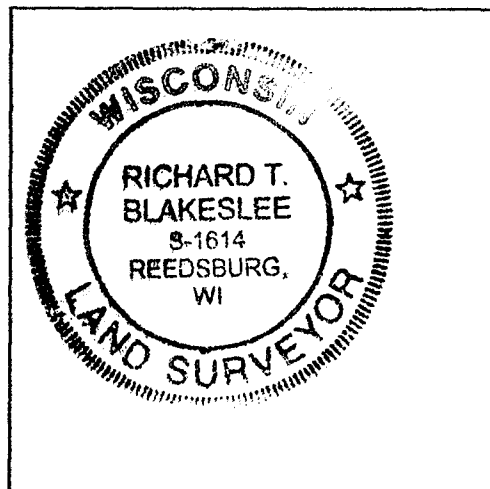
No

(G & H) WAS THE CORNER REESTABLISHED THROUGH LOST CORNER PROPORTIONATE METHODS? IF SO SHOW THE METHOD, INCLUDING THE DIRECTIONS AND DISTANCES TO OTHER PUBLIC LAND SURVEY CORNERS USED AS EVIDENCE OR USED FOR PROPORTIONING IN DETERMINING THE CORNER LOCATION.

N/A

AFFIX LAND SURVEYOR SEAL

(I) I, RICHARD T. BLAKESLEE CERTIFY THAT THE LOCATION SHOWN ON THIS RECORD WAS DETERMINED BY ME OR UNDER MY DIRECTION AND CONTROL AND THAT THIS U.S. PUBLIC LAND SURVEY MONUMENT RECORD IS CORRECT AND COMPLETE TO THE BEST OF MY KNOWLEDGE AND BELIEF.



Richard T. Blakeslee 1-27-07
SIGNATURE DATE