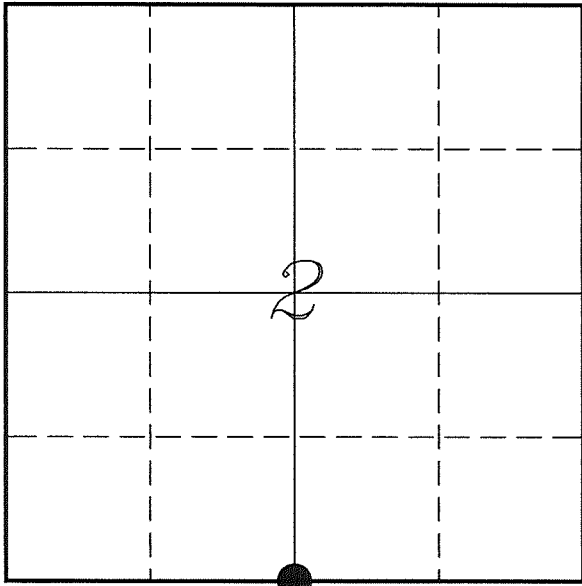


U. S. PUBLIC LAND SURVEY MONUMENT RECORD

**SECTION 2, T13N, R1W, TOWN OF UNION
VERNON COUNTY, WISCONSIN**



LOCATION OF LANDMARK

<i>VERNON COUNTY COORDINATE SYSTEM</i>	
<i>Northing</i>	<i>174496.916</i>
<i>Easting</i>	<i>814965.397</i>
<i>Datum</i>	<i>NAD 1983 (2011)</i>
<i>Elevation</i>	
<i>Datum</i>	
<i>TYPE OF LANDMARK:</i>	
<i>Set Lunde Monument 4" Brass Capped Iron Pipe</i>	
<i>BEARINGS ARE REFERENCED TO:</i>	
<i>Vernon County Coordinates (Survey Grade)</i>	

Witnesses: Al Hoff

Eagle Ridge Surveying
PO Box 213
Wilton, Wisconsin

Date: 11 June 2018

Describe any record evidence, monument evidence, testimonial evidence or any other material evidence you considered and whether the monument was found or restored through acceptance of an obliterated evidence location.

No bearing trees of record were located.

Found the 1" iron pipe as shown on Rummler's tie sheet along with one of his ties.

I found no record of the origin of the iron pipe. I agreed with Rummler's determination that this pipe fit measurements to the East and West.

I accepted the iron pipe as the best available evidence of the original government corner and replaced it with a Lunde Monument.

Describe or show any material discrepancy between the location of the restored corner and that of the corner previously restored or re-established.

Alfred L Brown established this corner in January 1846.

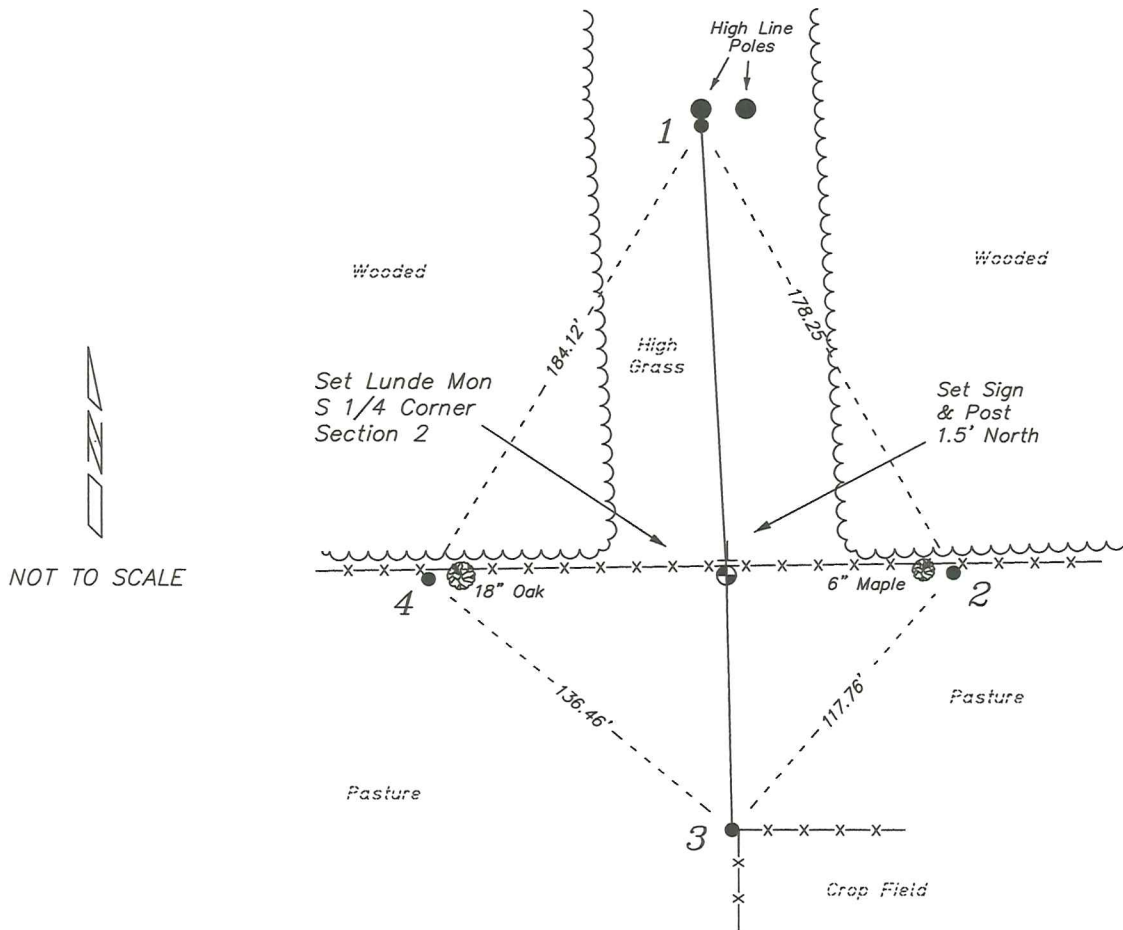
Wm Knower was at this corner, in November 1887, during a survey in Section 2. He shows he found the government corner.

Wm Knower was at this corner again, in November 1899, during a survey in Section 11. He shows this corner as being from the previous survey.

Todd Rummler was at this corner, in May 2003, during a survey in Section 2. He shows he found a 1" iron pipe. He prepared a tie sheet for this corner.

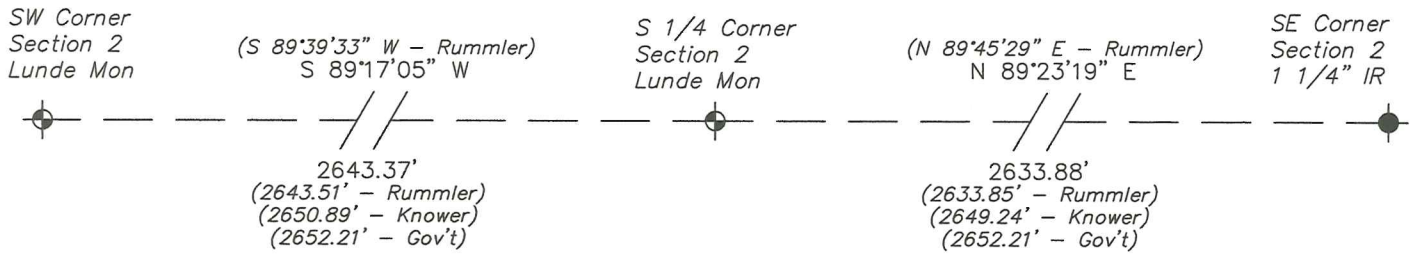
RECORD OF DURABLE WITNESS MONUMENTS

NO	DESCRIPTION	BEARING	DISTANCE
1	Set 3/4" x 18" Iron Rod South Side of Westerly Power Pole	N 03°07'47" W	156.71'
2	Set 3/4" x 18" Iron Rod In Fence - 2' East of a 6" Maple	N 89°17'00" E	78.60'
3	Existing 3/4" Iron Rod West Side of Fence Corner	S 01°14'53" E (S 01°17'05" W)	88.42' (88.83')
4	Set 3/4" x 18" Iron Rod In Fence - 3' West of a 18" Oak	S 89°12'11" W	103.24'

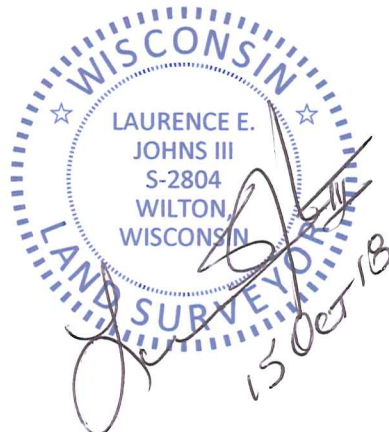


PLAN VIEW DRAWING OF REFERENCE TIES

Map Showing Distance And Direction To Other Public Land Survey Corners Used For Re-Establishing The Corner



I, Laurence E Johns III PLS 2804, Professional Land Surveyor, hereby certify that the corner location shown on this record was determined by me or under my direction and control, and that this U.S. Public Land Survey Monument Record is correct and complete to the best of my knowledge and belief.



RECEIVED
MAY 19 2003
BY: m. m.

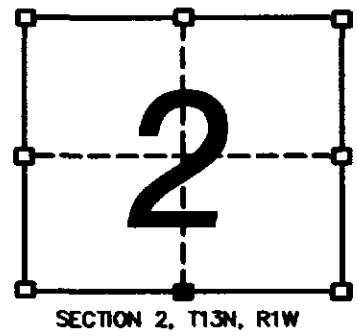
VERNON COUNTY CERTIFIED U.S. PUBLIC LAND SURVEY MONUMENT RECORD

INSTRUCTIONS: THIS RECORD SHALL SHOW THE LOCATION OF THE CORNER AND SHALL INCLUDE ALL OF THE FOLLOWING NINE ELEMENTS (A THROUGH I)

- (A) IDENTIFY THE CORNER BY REFERENCE TO THE U.S. PUBLIC LAND SURVEY SYSTEM
■ = CORNER MONUMENT RESTORED

WITNESSES TO CORNER LOCATION:
CHRISTOPHER G. REEDY
MICHAEL J. KAST

STATE PLANE COORDINATES (WISCONSIN SOUTH ZONE)
NORTHING:
EASTING:



- (B) DESCRIBE ANY RECORD EVIDENCE, MONUMENT EVIDENCE, OCCUPATIONAL EVIDENCE, TESTIMONIAL EVIDENCE, OR ANY OTHER MATERIAL EVIDENCE YOU CONSIDERED, AND WHETHER THE MONUMENT WAS FOUND OR PLACED.

I FOUND A 1" PIPE AT FENCE CORNER E/W/S AT THE POWER LINE CUT. ACCEPTED AS CORNER FOLLOWING EDM TRAVERSE OF SOUTH LINE OF SSECTION 2.

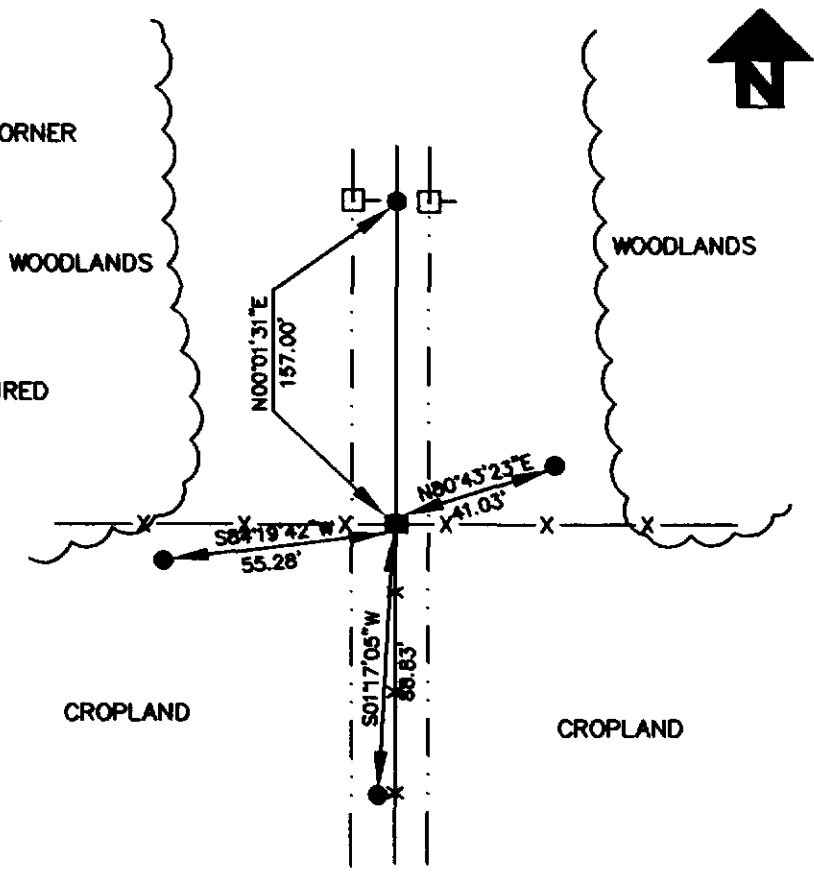
- (C) IN THE PLAN VIEW DRAWING BELOW, PROVIDE REFERENCE TIES TO AT LEAST 4 WITNESS MONUMENTS, OR, IF

- (D) SHOW A PLAN VIEW DRAWING DEPICTING THE RELEVANT MONUMENTS AND

LEGEND

- 1" IRON PIPE FOUND AT CORNER
- 3/4" X 24" IRON ROD SET AS TIE
- POWER POLE

TIE DISTANCES WERE MEASURED HORIZONTALLY BY E.D.M.



(E) DESCRIBE ANY MATERIAL DISCREPANCY BETWEEN THE LOCATION OF THE CORNER AS RESTORED OR REESTABLISHED AND THE LOCATION OF THAT CORNER AS PREVIOUSLY RESTORED OR REESTABLISHED BY DISTANCE AND DIRECTION. SHOW THE DISCREPANCY ON THE PLAN VIEW DRAWING UNDER (D), ABOVE. SHOW THE DISTANCES BETWEEN THE CORNER AS PREVIOUSLY RESTORED OR REESTABLISHED AND (1) THE CORNER AS RESTORED OR REESTABLISHED, AND (2) TO AT LEAST 2 OF THE WITNESS MONUMENTS SHOWN ON THE DRAWING IN (D) ABOVE.

NONE

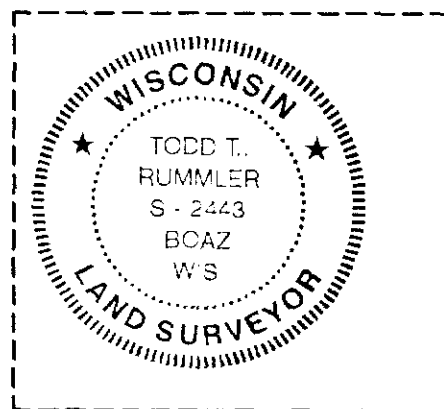
(F) WAS THE CORNER RESTORED THROUGH ACCEPTANCE OF (1) AN OBLITERATED EVIDENCE LOCATION, OR, (2) A FOUND PERPETUATED LOCATION?

(2) A FOUND PERPETUATED LOCATION

(G&H) WAS THE CORNER REESTABLISHED THROUGH LOST CORNER PROPORTIONATE METHODS? IF SO, SHOW THE METHOD, INCLUDING THE DIRECTIONS AND DISTANCES TO OTHER PUBLIC LAND SURVEY CORNERS USED AS EVIDENCE OR USED FOR PROPORTIONING IN DETERMINING THE CORNER LOCATION.

NO.

AFFIX LAND SURVEYOR SEAL



(I) I, TODD T. RUMMLER, R.L.S. - 2443
CERTIFY THAT THE CORNER LOCATION SHOWN ON THIS RECORD WAS DETERMINED BY ME OR UNDER MY DIRECTION AND CONTROL AND THAT THIS U.S. PUBLIC LAND SURVEY MONUMENT RECORD IS CORRECT AND COMPLETE TO THE BEST OF MY KNOWLEDGE AND BELIEF.


SIGNATURE

5/5/03
DATE