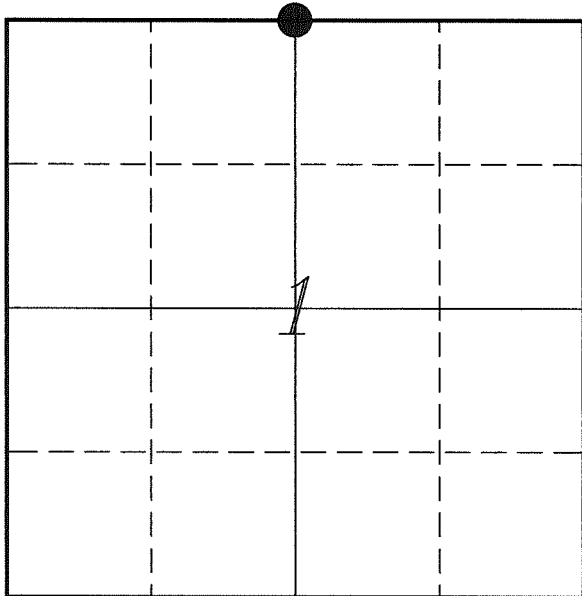


U. S. PUBLIC LAND SURVEY MONUMENT RECORD

**SECTION 1, T13N, R1W, TOWN OF UNION
VERNON COUNTY, WISCONSIN**



LOCATION OF LANDMARK

<i>VERNON COUNTY COORDINATE SYSTEM</i>	
<i>Northing</i>	<i>179408.289</i>
<i>Easting</i>	<i>820169.296</i>
<i>Datum</i>	<i>NAD 1983 (2011)</i>
<i>Elevation</i>	
<i>Datum</i>	
<i>TYPE OF LANDMARK:</i>	
<i>Existing Stone Monument</i>	
<i>BEARINGS ARE REFERENCED TO:</i>	
<i>Vernon County Coordinates</i>	

Witnesses: Laurence E Johns III
Larry Handschy

Eagle Ridge Surveying
PO Box 213
Wilton, Wisconsin

Date: 10 February 2016

Describe any record evidence, monument evidence, testimonial evidence or any other material evidence you considered and whether the monument was found or restored through acceptance of an obliterated evidence location.

No bearing trees of record were located.

I found no record of the stone monument. There have been some surveyors who have accepted the stone as the S 1/4 Corner of Section 36 and some that have accepted it as the N 1/4 corner of Section 1 and some as both.

Since there has not been a total agreement on the corner and since Knower did show it as two separate corners, I did some extensive measurements to determine which it was.

The stone monument is not located anywhere near the mid-point as would the S 1/4 Corner would normally be, it is located further West, even more so than what Knower shows it as.

I measured the fence line that runs from the N 1/4 corner of Section 36 through the center of section. This fence agrees with this corner being at the mid-point as originally established in the government survey. The occupation along the North/South quarter line in Section 1 supports the Stone representing the N 1/4 Corner for that section.

I determined that the Stone Monument represents the N 1/4 Corner of Section 1 and that the S 1/4 Corner of Section 36 should be at the mid-point between section corners. Since the stone is of very stable condition, I left it in place.

Describe or show any material discrepancy between the location of the restored corner and that of the corner previously restored or re-established.

This corner was not established during the original government survey.

Wm Knower was at this corner, in October 1887, during a survey in Section 1. He shows this corner as being offset from the N 1/4 corner of Section 1 by 28 links.

Wm Knower was at this corner, in December 1887, during a survey in Section 36. He shows the found the government corner based on good evidence as per field notes.

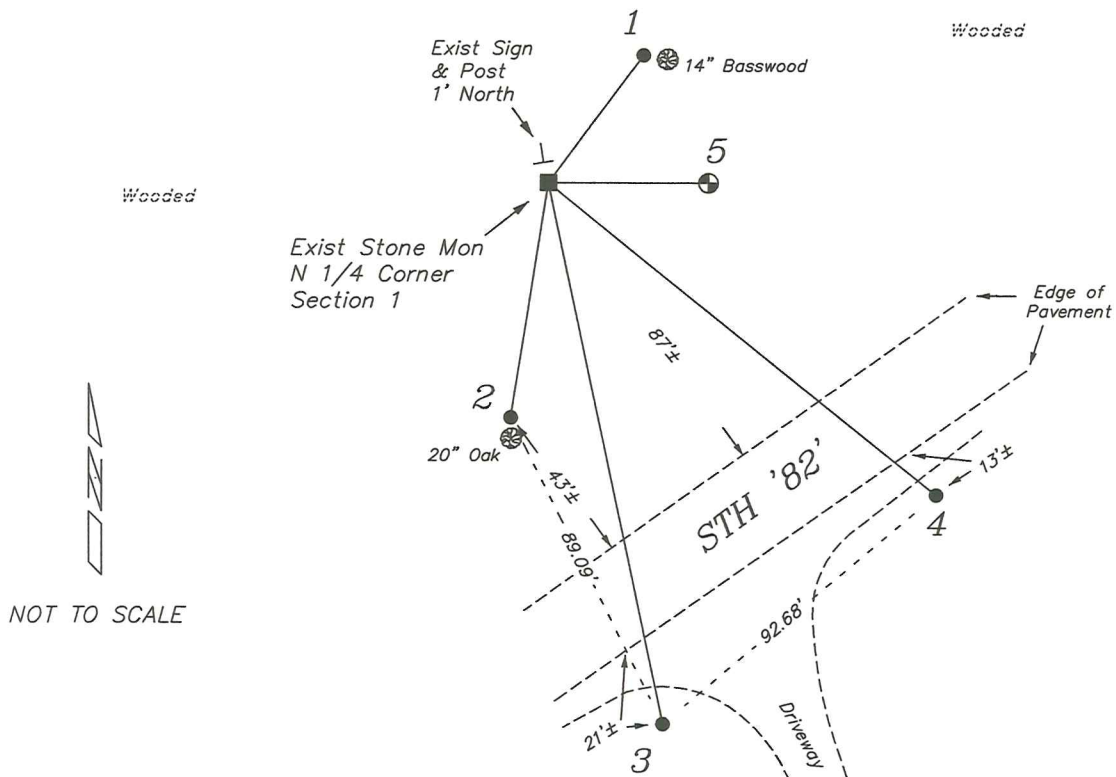
James Carroll was at this corner during several surveys in Section 36 and Section 1, in November 1991, January 1992, July 2002. He shows this stone for both the N 1/4 Corner of Section 1 and the S 1/4 Corner of Section 36.

Richard Blakeslee shows this corner on a tie sheet, dated August 2006. He shows a found stone.

Gregory Fauerbach was at this corner, in July 2015, during a survey in Section 36 and Section 1. He shows this corner to be both the N 1/4 Corner of Section 1 and the S 1/4 Corner of Section 36.

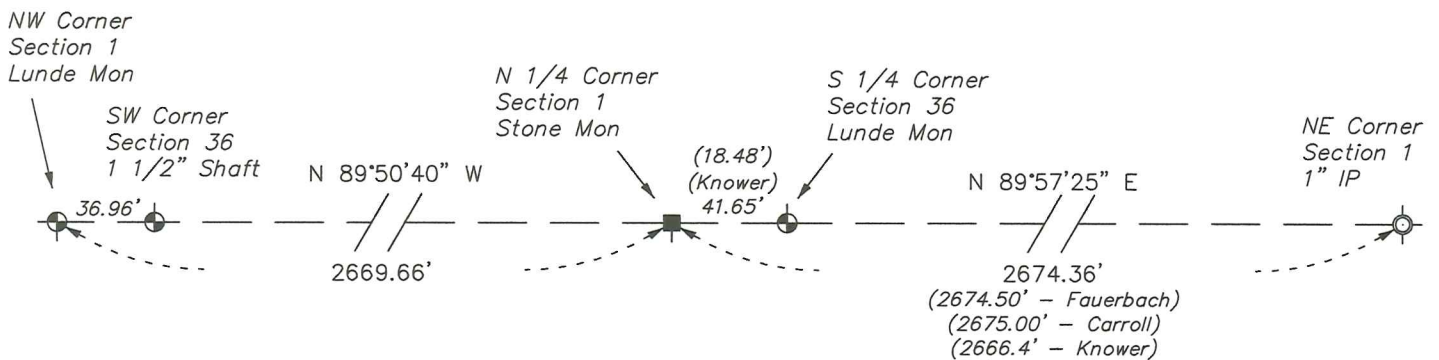
RECORD OF DURABLE WITNESS MONUMENTS

NO	DESCRIPTION	BEARING	DISTANCE
1	Existing 3/4" Iron Rod 1' West of a 14" Basswood	N 36°40'25" E	41.52' (41.78')
2	Set 3/4" x 18" Iron Rod 1' North of a 20" Oak	S 09°06'03" W	124.03'
3	Set 3/4" x 18" Iron Rod 1' South Address Sign Post	S 11°53'15" E	288.36'
4	Set 3/4" x 18" Iron Rod In Ditch Line	S 51°00'03" E	259.32'
5	Lunde Monument S 1/4 Corner - Section 36	S 89°50'40" E	41.65'



PLAN VIEW DRAWING OF REFERENCE TIES

Map Showing Distance And Direction To Other Public Land Survey Corners Used For Re-Establishing The Corner



I, Laurence E Johns III PLS 2804, Professional Land Surveyor, hereby certify that the corner location shown on this record was determined by me or under my direction and control, and that this U.S. Public Land Survey Monument Record is correct and complete to the best of my knowledge and belief.

