

VERNON COUNTY CERTIFIED U.S. PUBLIC LAND SURVEY MONUMENT RECORD

INSTRUCTIONS: THIS RECORD SHALL SHOW THE LOCATION OF THE CORNER AND SHALL INCLUDE ALL OF THE FOLLOWING ELEMENTS (A-I)

BRASS LUNDE MONUMENT SET AT 1/4 CORNER ON RANGE LINE.

(A) IDENTIFY THE CORNER BY REFERENCE TO THE U.S. PUBLIC LAND SURVEY SYSTEM

■ = CORNER MONUMENT RESTORED

WITNESSES TO CORNER LOCATION:

- 1)
- 2)
- 3)

STATE PLANE COORDINATES (WISCONSIN SOUTH ZONE)

NORTHING:

EASTING:

VERNON COUNTY COORDINATES N 177396.21 Town of UNION Town of GREENWOOD
 NORTHING:
 EASTING: NAD83(2011) E 822865.36

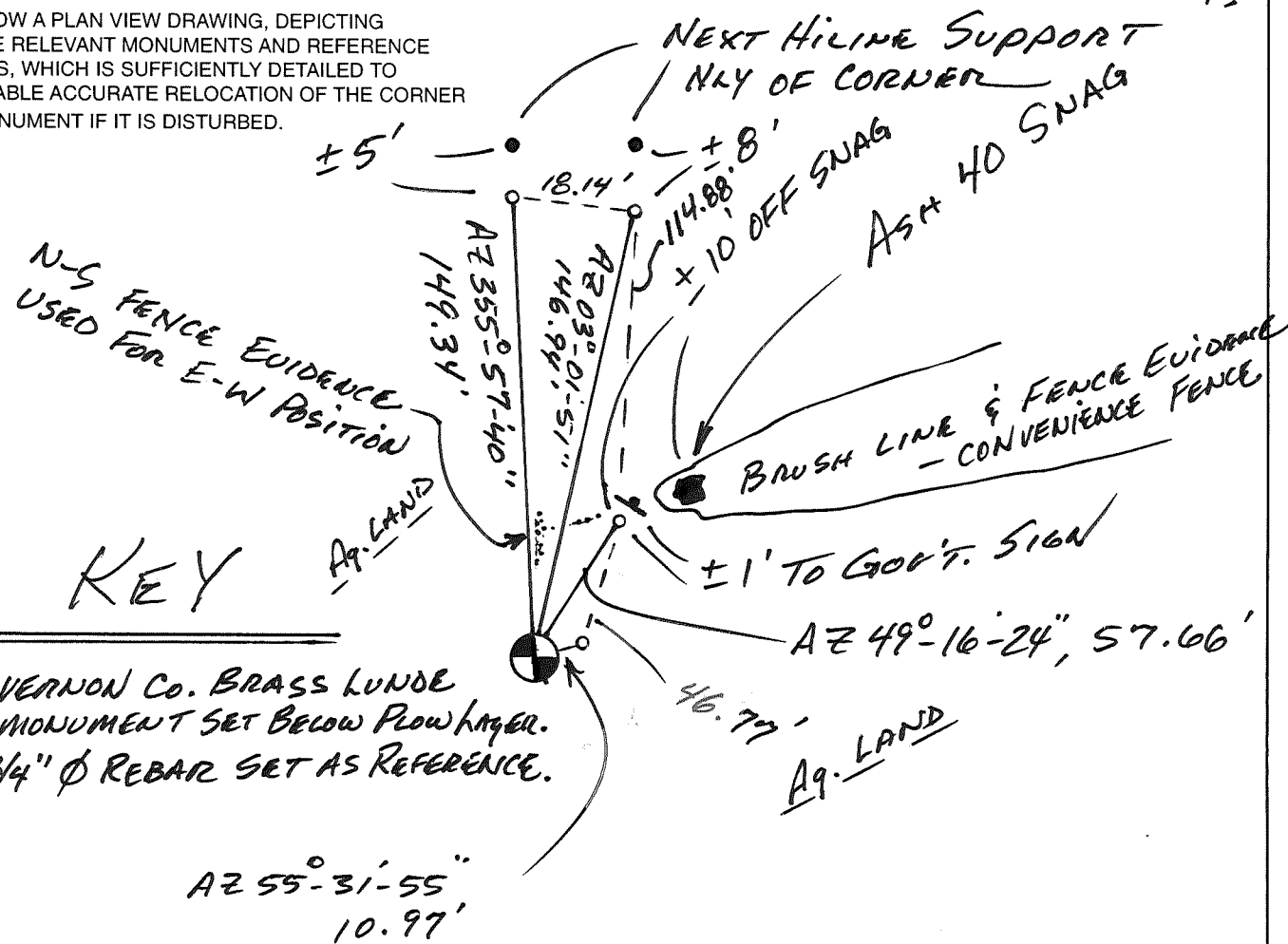
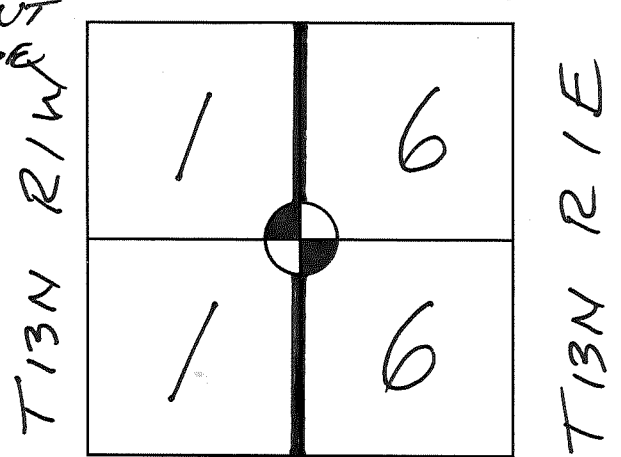
(B) DESCRIBE ANY RECORD EVIDENCE, MONUMENT EVIDENCE, OCCUPATIONAL EVIDENCE, TESTIMONIAL EVIDENCE OR ANY OTHER MATERIAL EVIDENCE YOU CONSIDERED, AND WHETHER THE MONUMENT WAS FOUND OR PLACED.

E-W POSITION UTILIZED FENCE LINE EVIDENCE BOLSTERED WITH CHECKING IN TO FENCE CORNER BORDS ± ELY. THAT WAS WITHIN 3.6' OF KNOWER'S CALL 1515.69' (VOL. 1 Pg 313) N-S POSITION WAS FROM PASSING CALL OF A STREAM AS SE COR. SEC. 1 WAS APPROACHED HEADING NLY (@ 79.90 CH.)

(C) IN THE PLAN VIEW DRAWING BELOW, PROVIDE REFERENCE TIES TO AT LEAST 4 WITNESS MONUMENTS OR, IF THE LOCATION IS WITHIN A MUNICIPALITY, TO AT LEAST 2 WITNESS MONUMENTS. (WITNESS MONUMENTS SHALL BE MADE OF CONCRETE, NATURAL STONE, IRON, OR OTHER EQUALLY DURABLE MATERIAL.) DESCRIBE WITNESS MONUMENTS.

N-S POSITION ALSO USED FENCE EVIDENCE @ CALL 10 CH. NLY, 20 CH. NLY AND THE EXISTING NE COR. SEC. 1 @ 30 CH. NLY.

(D) SHOW A PLAN VIEW DRAWING, DEPICTING THE RELEVANT MONUMENTS AND REFERENCE TIES, WHICH IS SUFFICIENTLY DETAILED TO ENABLE ACCURATE RELOCATION OF THE CORNER MONUMENT IF IT IS DISTURBED.



KEY

- VERNON Co. BRASS LUNDE MONUMENT SET BELOW FLOW LAYER.
- 3/4" Ø REBAR SET AS REFERENCE.

(E) DESCRIBE ANY MATERIAL DISCREPANCY BETWEEN THE LOCATION OF THE CORNER AS RESTORED OR REESTABLISHED AND THE LOCATION OF THAT CORNER AS PREVIOUSLY RESTORED OR REESTABLISHED BY DISTANCE AND DIRECTION. SHOW THE DISCREPANCY ON THE PLAN VIEW DRAWING UNDER (D), ABOVE. SHOW THE DISTANCES BETWEEN THE CORNER AS PREVIOUSLY RESTORED OR REESTABLISHED AND (1) THE CORNER AS RESTORED OR REESTABLISHED, AND (2) TO AT LEAST 2 OF THE WITNESS MONUMENTS AS SHOWN ON THE DRAWING IN (D), ABOVE.

NONE.

(F) WAS THE CORNER RESTORED THROUGH ACCEPTANCE OF (1) AN OBLITERATED EVIDENCE LOCATION, OR (2) A FOUND PERPETUATED LOCATION?

(2) FENCE LINES PERPETUATED POSITIONING N-S.

THE 1/16th CORNER NWY OF THIS CORNER HAD A 2-WAY HEADING S E E (CALL 20 CH. N. OF THIS CORNER)

THEN THE CLOSING CALL TO NE CORNER SEC. 1 WAS 10 CH, WHERE ONE FOUND THE EXISTING TOWN CORNER @ A 2-WAY HEADING N E E.

(G & H) WAS THE CORNER REESTABLISHED THROUGH LOST CORNER PROPORTIONATE METHODS? IF SO SHOW THE METHOD, INCLUDING THE DIRECTION AND DISTANCES TO OTHER PUBLIC LAND SURVEY CORNERS USED AS EVIDENCE OR USED FOR PROPORTIONING IN DETERMINING THE CORNER LOCATION.

No.

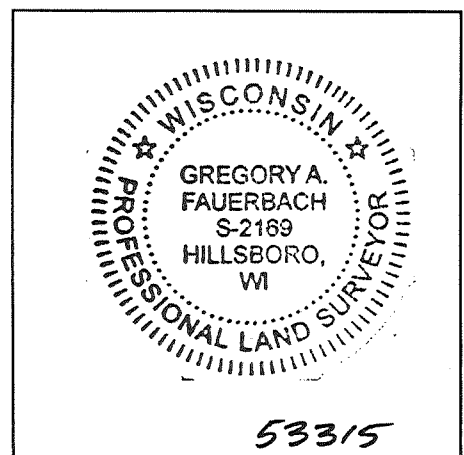
CORNER HISTORY

- ELY TOWN LINE FOR TOWN OF UNION T13N R1W BY JOSHUA HATHAWAY, MAY 1839.

- WM. KNOWER VISITS CORNER OCT. 28, 1887 IN THE SUBDIV. OF SECTION 1. HE RENEWED BT'S SUGAR 6, N40°W, 27 L. = 17.82'. SEE VOL. 1/Pg. 311. SUGAR 6, S47°W, 48 3/4 L. = 32.18'.

- WM. KNOWER VISITS CORNER OCT. 31 - NOV. 4, 1887 AS WELL IN THE SUBDIV. OF SECTION 6, T13N, R1E, TOWN OF GREENWOOD. SEE VOL. 1/Pg 313.

AFFIX LAND SURVEYOR SEAL



(I) I, GREGORY FAUERBACH CERTIFY THAT THE LOCATION SHOWN ON THIS RECORD WAS DETERMINED BY ME OR UNDER MY DIRECTION AND CONTROL AND THAT THIS U.S. PUBLIC LAND SURVEY MONUMENT RECORD IS CORRECT AND COMPLETE TO THE BEST OF MY KNOWLEDGE AND BELIEF.

Gregory A. Fauerbach 8/3/15

SIGNATURE

DATE

VERNON COUNTY COORDINATE FORM
Addendum To
U.S. PUBLIC LAND SURVEY MONUMENT RECORD

Form Date
7-8-14

INSTRUCTIONS: THIS RECORD FORM SHOULD BE USED WHEN COORDINATES ARE PROVIDED FOR A PUBLIC LAND SURVEY CORNER AND SHALL INCLUDE ALL OF THE FOLLOWING ELEMENTS (A-D) UNLESS INDICATED AS OPTIONAL

(A) IDENTIFY THE CORNER BY REFERENCE TO THE U.S. PUBLIC LAND SURVEY SYSTEM IN DIAGRAM AT RIGHT

(B) COORDINATES:

N 177396.21

VERNON COUNTY (U.S. FEET) E 822865.36

NORTHING (Y):

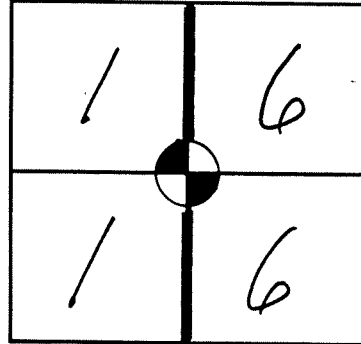
EASTING (X):

GEOGRAPHIC (DMS to 4 decimal places):

LATITUDE:

LONGITUDE:

HORIZONTAL DATUM: NAD83(2011) VCCS



ORTHOMETRIC HT (U.S. ft): (optional)

VERTICAL DATUM:

T13N R1W
UNION

T13N R1E
GREENWOOD

METHOD USED TO COMPUTE COORDINATES (check as applicable):

RTK Observations from WISCORS Control

RTK Observations from Passive Wl. Ht. Modernization Control

Static Baselines

OPUS-RS Solution OPUS-S Solution

Combination of conventional procedures with GPS observations to set temporary control

Single Angle Measurement

Closed Traverse Loop

BASE CONTROL USED FOR COORDINATE COMPUTATION:

Station Name

Station Coordinates

Date/Time

* Please List Any Additional Control Stations Used/Notes/Information on Back of Form

(C) REASON FOR COORDINATE SUBMITTAL (check one):

Being Filed With a New U.S. PLS Monument Record

-Or-

To Correct the Coordinates Listed on a Previously Filed PLS Monument Record

To Provide Coordinates for a Previously Filed PLS Monument Record without Coordinates

To Provide Supplemental Coordinates for Previously Filed U.S. Public Land Survey Monument Record

R.L.S. & DATE OF PLS MONUMENT RECORD:

(D) AGENT(S) PERFORMING GPS OBSERVATIONS & COORDINATE COMPUTATION

1) _____

2) _____

1. GREG FAUERBACH

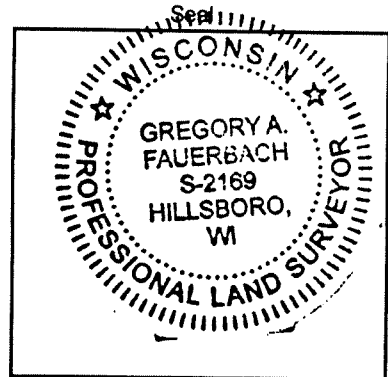
CERTIFY THAT THE COORDINATES PROVIDED ON THIS RECORD WERE DETERMINED BY ME OR UNDER MY DIRECTION AND CONTROL AND THAT THIS COORDINATE SUBMISSION FORM IS CORRECT AND COMPLETE TO THE BEST OF MY KNOWLEDGE AND BELIEF.

Gary A. James

SIGNATURE

7/27/15

DATE



Mean report for point 150

Use	State	Reference	Date/Time	Posn.diff	Hgt diff	Posn. + Hgt diff	Posn. Qty
<input checked="" type="checkbox"/>	Automatic	RTCM-Ref 0946(1)	07/19/2015 08:30:52	0.0224	-0.0533	0.0578	0.0318
<input checked="" type="checkbox"/>	Automatic	RTCM-Ref 0946(1)	07/19/2015 08:31:00	0.0292	-0.0429	0.0519	0.0291
<input checked="" type="checkbox"/>	Automatic	RTCM-Ref 0946(1)	07/19/2015 08:34:25	0.0166	0.0155	0.0227	0.0273
<input checked="" type="checkbox"/>	Automatic	RTCM-Ref 0946(1)	07/19/2015 08:34:41	0.0126	0.0109	0.0167	0.0277
<input checked="" type="checkbox"/>	Automatic	RTCM-Ref 0946(1)	07/19/2015 08:34:51	0.0165	0.0004	0.0165	0.0274
<input checked="" type="checkbox"/>	Automatic	RTCM-Ref 0946(1)	07/19/2015 08:48:16	0.0271	0.0386	0.0471	0.0297
<input checked="" type="checkbox"/>	Automatic	RTCM-Ref 0946(1)	07/19/2015 08:48:49	0.0403	0.0224	0.0461	0.0281
<input checked="" type="checkbox"/>	Automatic	RTCM-Ref 0501	07/21/2015 14:34:19	0.0329	0.0010	0.0329	0.0256
<input checked="" type="checkbox"/>	Automatic	RTCM-Ref 0508	07/21/2015 14:35:25	0.0188	0.0219	0.0288	0.0256
<input checked="" type="checkbox"/>	Automatic	RTCM-Ref 0508	07/21/2015 14:35:35	0.0514	-0.0858	0.1001	0.0800
<input checked="" type="checkbox"/>	Automatic	RTCM-Ref 0508	07/21/2015 14:35:45	0.0540	-0.0222	0.0584	0.0608

Mean report for point 150

Hgt. Qty	Posn. + Hgt. Qty	Northing	Easting	Ellip. Hgt.	Ortho. Hgt.	Geoid Sep.
0.0520	0.0609	177396.2144	822865.3798	294.0223	1297.9697	-1003.9475
0.0476	0.0558	177396.2081	822865.3879	294.0119	1297.9593	-1003.9475
0.0482	0.0553	177396.2212	822865.3501	293.9535	1297.9009	-1003.9475
0.0480	0.0554	177396.2176	822865.3517	293.9580	1297.9055	-1003.9475
0.0457	0.0533	177396.2228	822865.3540	293.9686	1297.9161	-1003.9475
0.0631	0.0697	177396.2194	822865.3345	293.9304	1297.8779	-1003.9475
0.0591	0.0654	177396.2290	822865.3249	293.9465	1297.8940	-1003.9475
0.0325	0.0413	177396.1911	822865.3874	293.9680	1297.9154	-1003.9475
0.0338	0.0424	177396.1889	822865.3538	293.9470	1297.8945	-1003.9475
0.1165	0.1413	177396.1586	822865.3758	294.0548	1298.0022	-1003.9475
0.0889	0.1077	177396.1539	822865.3685	293.9911	1297.9386	-1003.9475

LUNDE Monument SET @ E 1/4 CORNER

SECTION 1, T13N, R1W = POINT 150

CQ = 0.0124