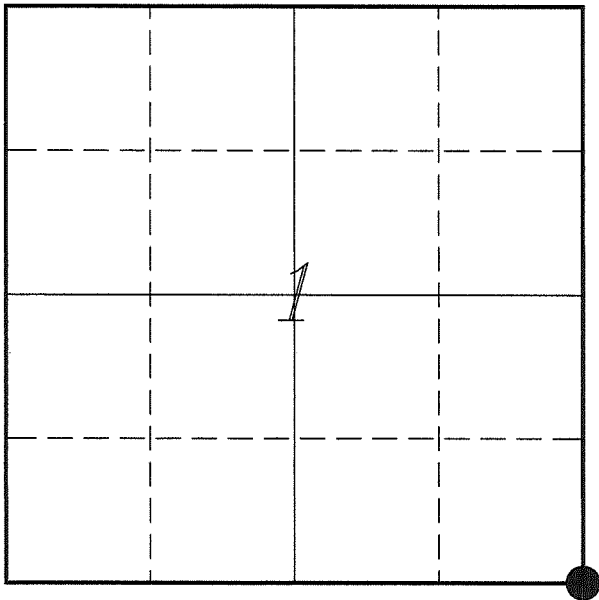


**U. S. PUBLIC LAND SURVEY MONUMENT RECORD**

**SECTION 1, T13N, R1W, TOWN OF UNION  
VERNON COUNTY, WISCONSIN**



**LOCATION OF LANDMARK**

<i>VERNON COUNTY COORDINATE SYSTEM</i>	
<i>Northing</i>	<i>174806.058</i>
<i>Easting</i>	<i>822897.483</i>
<i>Datum</i>	<i>NAD 1983 (2011)</i>
<i>Elevation</i>	
<i>Datum</i>	
<i>TYPE OF LANDMARK:</i>	
<i>Set 1 1/4" x 18" Iron Rod</i>	
<i>BEARINGS ARE REFERENCED TO:</i>	
<i>Vernon County Coordinates (Survey Grade)</i>	

*Witnesses:* Laurence E Johns III  
Al Hoff

*Eagle Ridge Surveying*  
PO Box 213  
Wilton, Wisconsin

*Date:* 5 November 2017

*Describe any record evidence, monument evidence, testimonial evidence or any other material evidence you considered and whether the monument was found or restored through acceptance of an obliterated evidence location.*

No bearing trees of record were located in the area of this corner.

I did find a bearing tree at the '40' corner to the East of this corner. Knower used it during his survey of Section 6 in 1887. It is a lone 52" Maple on the North side of the road.

I determined the '40' corner from this bearing tree and I extended a line from the S 1/4 Corner of Section 6 through this '40' corner and intersecting the fence from the North.

This method determined a location that was within 3 feet of the S 1/4 Corner of Section 6, 15 feet to the SE corner of Section 12 and 16 feet to the NE Corner of Section 1 as compared to Knower's surveys of 1887.

This location is located within the improved portion of St Johns Avenue.

I accepted this as the best available evidence of the original government corner and placed a 1 1/4" iron rod instead of Lunde Monument.

*Describe or show any material discrepancy between the location of the restored corner and that of the corner previously restored or re-established.*

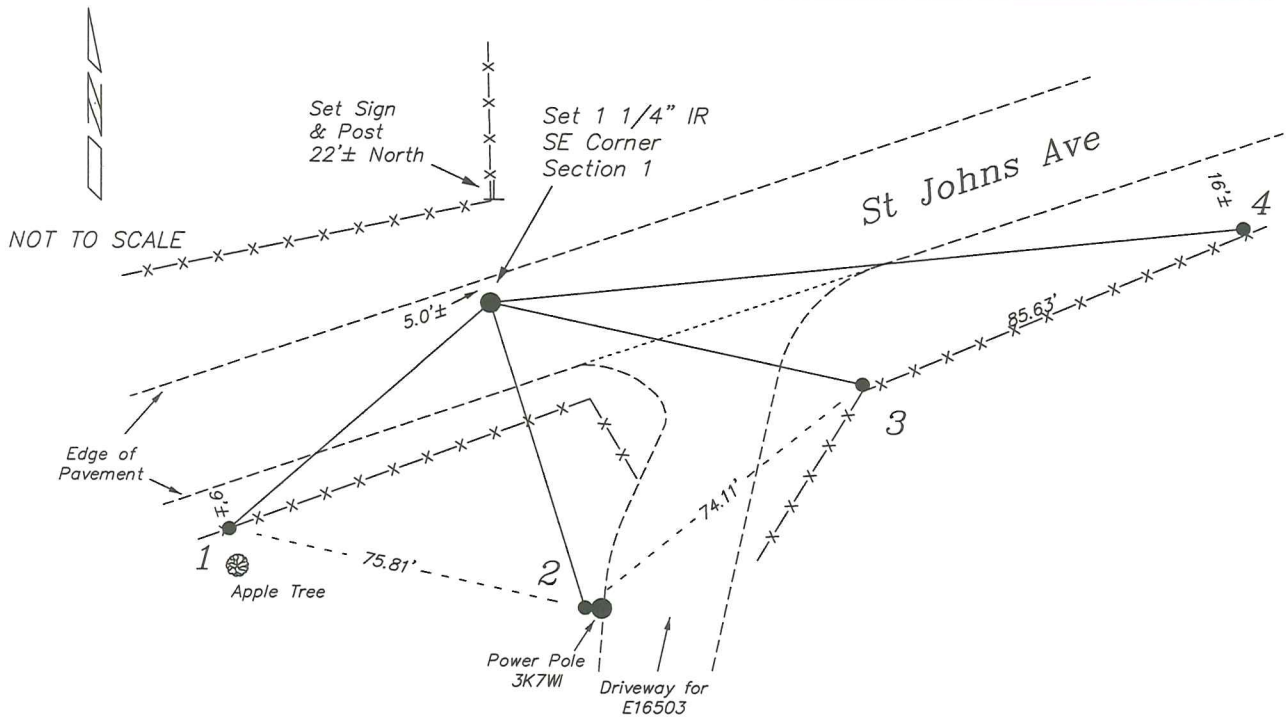
Joshua Hathaway established this corner in May 1839.

Wm Knower was at this corner, in February 1879, during a survey in Section 12. He shows finding the government corner.

Wm Knower was at this corner again, in November 1887, during surveys in Sections 1, 12, 6 & 7. He again shows finding the government corner.

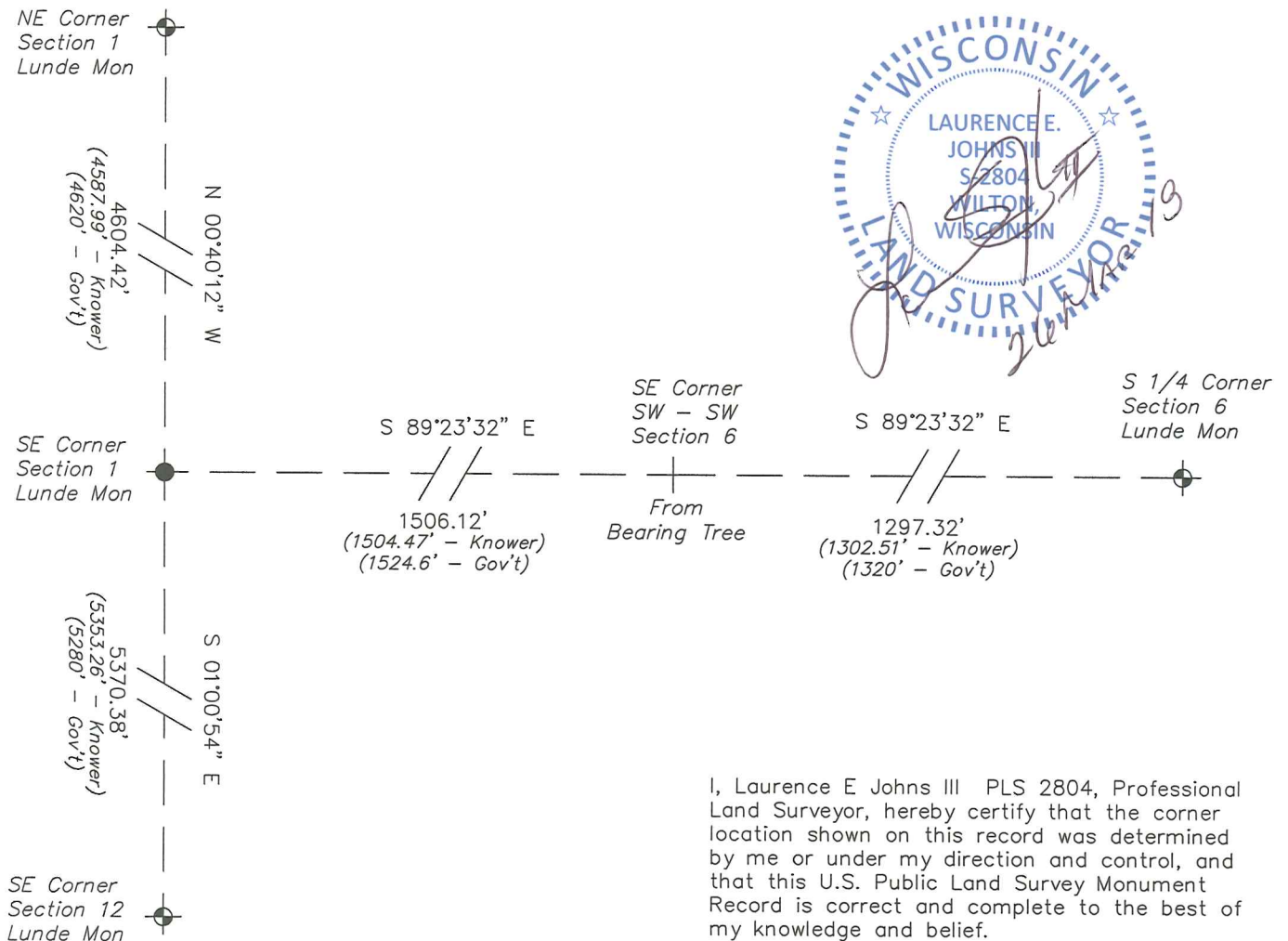
## RECORD OF DURABLE WITNESS MONUMENTS

NO	DESCRIPTION	BEARING	DISTANCE
1	Set 3/4" x 18" Iron Rod In Fence - 8' North of a Apple Tree	S 48°48'27" W	72.03'
2	Set 3/4" x 18" Iron Rod 1' West of Power Pole 3K7WI	S 17°19'51" E	66.66'
3	Set 3/4" x 18" Iron Rod North Side of Fence Corner Post	S 77°42'25" E	79.15'
4	Set 3/4" x 18" Iron Rod In Fence Line	N 84°11'24" E	157.26'



### PLAN VIEW DRAWING OF REFERENCE TIES

Map Showing Distance And Direction To Other Public Land Survey Corners Used For Re-Establishing The Corner



I, Laurence E Johns III PLS 2804, Professional Land Surveyor, hereby certify that the corner location shown on this record was determined by me or under my direction and control, and that this U.S. Public Land Survey Monument Record is correct and complete to the best of my knowledge and belief.