

203995

# Richland County

## GOVERNMENT CORNER RECORD

N 1/4 CORNER, SECTION 6, TOWNSHIP 12 NORTH, RANGE 2 EAST-WEST,  
TOWN, CITY OR VILLAGE OF FOREST, RICHLAND CO.

TYPE OF MONUMENT: RICHLAND CAST IRON ELEVATION - M.S.L. DATUM \_\_\_\_\_

STATE PLANE COORDINATES: N \_\_\_\_\_

WISCONSIN SOUTH ZONE E \_\_\_\_\_

WITNESSES TO CORNER LOCATION

SEAN WALSH

GARY POLLOCK

**RECORDED**

AT 9:45 O'CLOCK A M

SEP 30 1991

VOL. 1 OF Corners PAGE 12

BY SY MILLER, REGISTER OF DEEDS

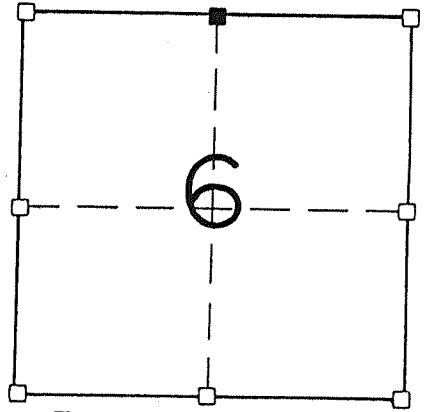
RICHLAND COUNTY, WISCONSIN

Sy Miller

\*\*\* FENCELINE

TIE SKETCH  
(SHOW ALL HELPFUL FEATURES)

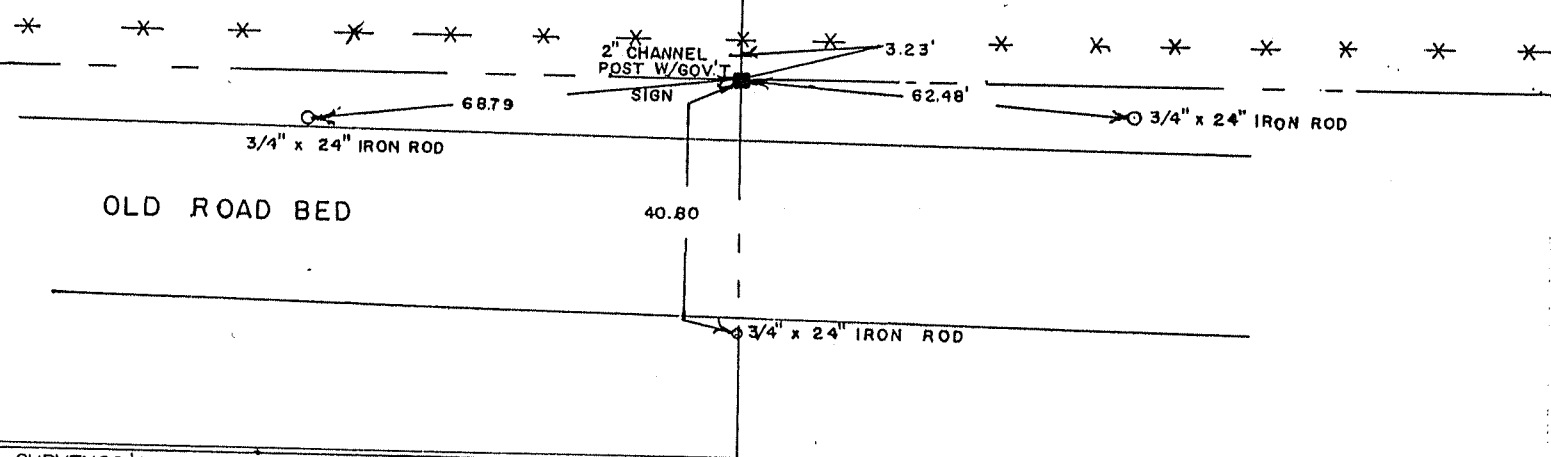
SECTION 6, T12 N, R 2 EW  
TOWN OF FOREST



■ - CORNER LOCATION

NORTH

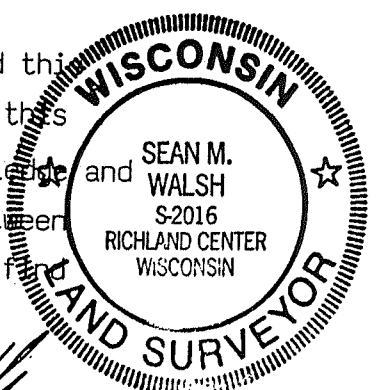
GRASSLANDS



SURVEYOR'S CERTIFICATE  
STATE OF WISCONSIN )  
RICHLAND COUNTY ) SS

SEAL S - 2016

I, Sean M. Walsh, DO HEREBY CERTIFY THAT I have established this corner in accordance with the information contained hereon and that this information is correct and true to the best of my information, knowledge and belief. I established this corner by single proportionate method between the Northwest and Northeast corners of section 6 as I was unable to find any other acceptable evidence.



DATED THIS 23<sup>RD</sup> DAY OF September, 19 91

Sean M. Walsh  
REGISTERED LAND SURVEYOR

CORNER CODE \_\_\_\_\_