

203096

Richland County

GOVERNMENT CORNER RECORD

NORTH 1/4 CORNER, SECTION 4, TOWNSHIP 12 NORTH, RANGE 2 EAST - WEST,
TOWN, ~~CITY OR VILLAGE~~ OF FOREST, RICHLAND CO.

TYPE OF MONUMENT: RICHLAND CAST IRON ELEVATION - M.S.L. DATUM _____

STATE PLANE COORDINATES: N _____

WISCONSIN SOUTH ZONE E _____

WITNESSES TO CORNER LOCATION

SEAN M. WALSH

PATRICK J. DEDERICH

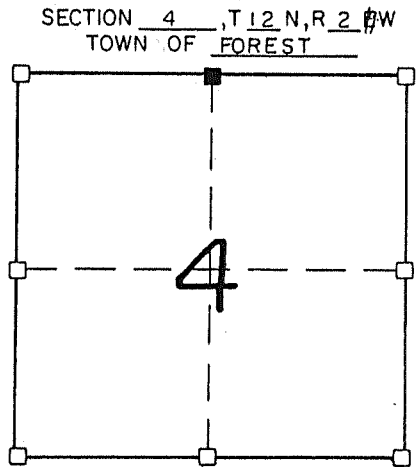
RECORDED

AT 8:30 O'CLOCK A M

JUN 13 1991

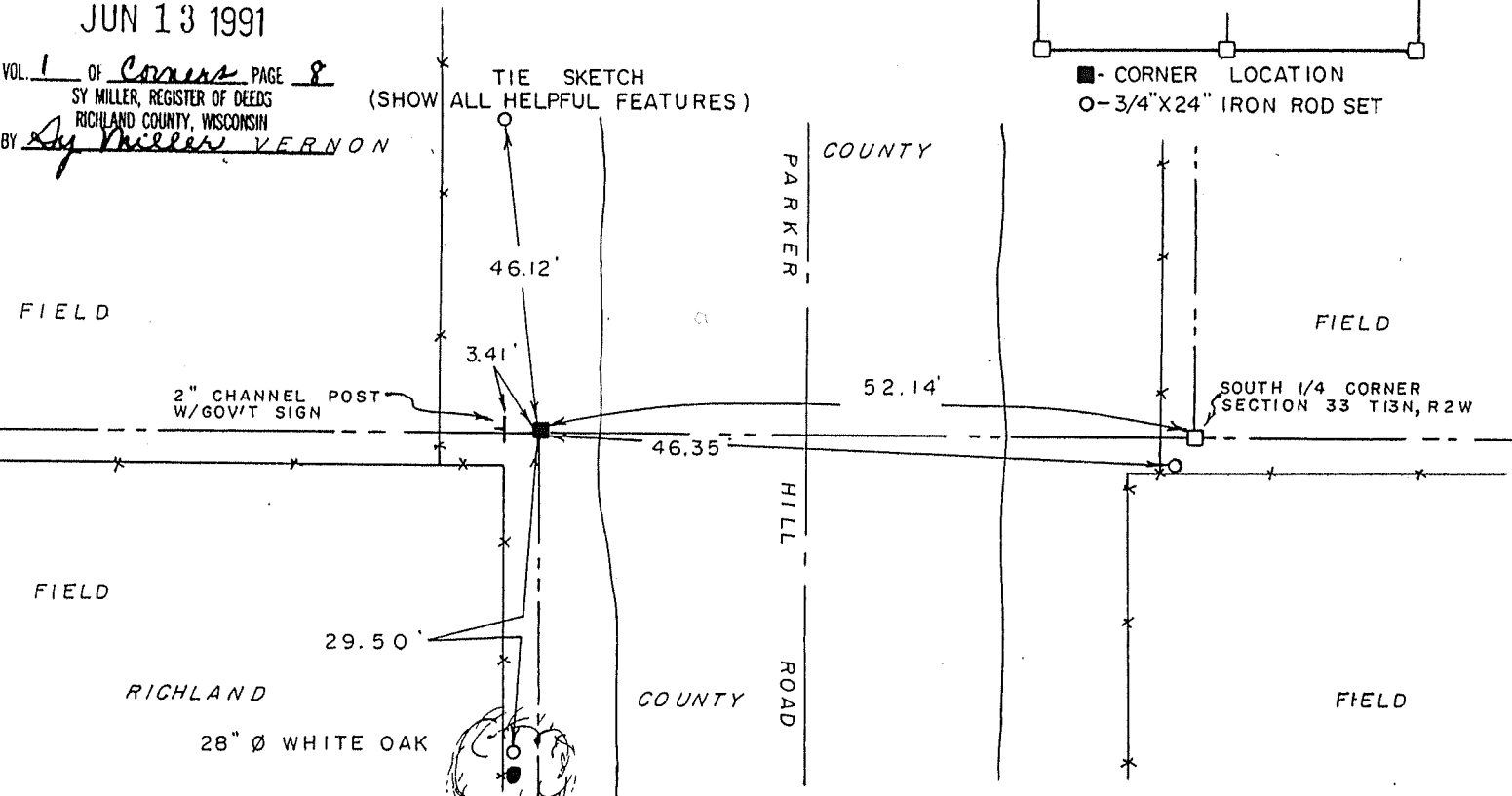
VOL. 1 OF COORS PAGE 8

BY Sy Miller VERNON
SY MILLER, REGISTER OF DEEDS
RICHLAND COUNTY, WISCONSIN



NORTH

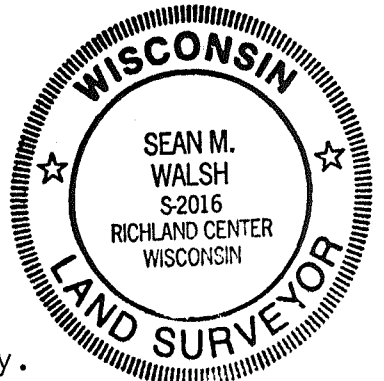
TIE SKETCH (SHOW ALL HELPFUL FEATURES)



SURVEYOR'S CERTIFICATE
STATE OF WISCONSIN)
RICHLAND COUNTY) SS

SEAL S-2016

I, Sean M. Walsh, DO HEREBY CERTIFY THAT the above
corner has been established under my direction and
supervision in accordance with the information
contained hereon and that this information is correct
to the best of my information, knowledge and belief.
I established this corner at the corrected distance
along the town line as shown on the orig. gov't survey.



DATED THIS 3RD DAY OF JUNE, 19 91

REGISTERED LAND SURVEYOR

Sean M. Walsh

CORNER CODE _____

BB

CORNER MAINTANENCE INFORMATION

CORNER APPROVED _____, DATE _____

RICHLAND COUNTY SURVEYOR, S -

ADDITIONAL INFORMATION IF NECESSARY

that this information is correct and true to the best of my information, knowledge and belief.