

202056

Richland County

GOVERNMENT CORNER RECORD

NORTH 1/4 CORNER, SECTION 3, TOWNSHIP 12 NORTH, RANGE 2 ~~EAST~~ - WEST,
TOWN, CITY OR VILLAGE OF FOREST, RICHLAND CO.

TYPE OF MONUMENT: RICHLAND CAST IRON ELEVATION - M.S.L. DATUM _____

STATE PLANE COORDINATES: N _____

WISCONSIN SOUTH ZONE E _____

WITNESSES TO CORNER LOCATION

SEAN M. WALSH

PATRICK J. DEDERICH

RECORDED

AT 9:00 O'CLOCK A M

DEC 31 1990

VOL. 1 OF Compass PAGE 4
BY MILLER, REGISTER OF DEEDS
RICHLAND COUNTY, WISCONSIN
BY Matthew J. Janiak

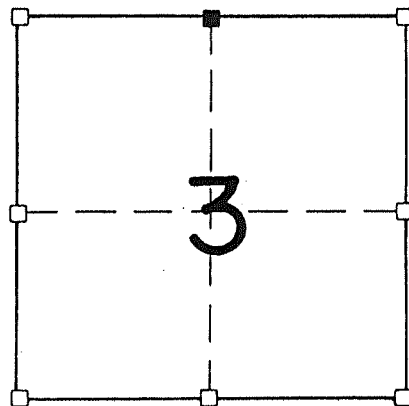
TIE SKETCH
(SHOW ALL HELPFUL FEATURES)
NOT TO SCALE

TOWN OF STARK, VERNON COUNTY

FIELD

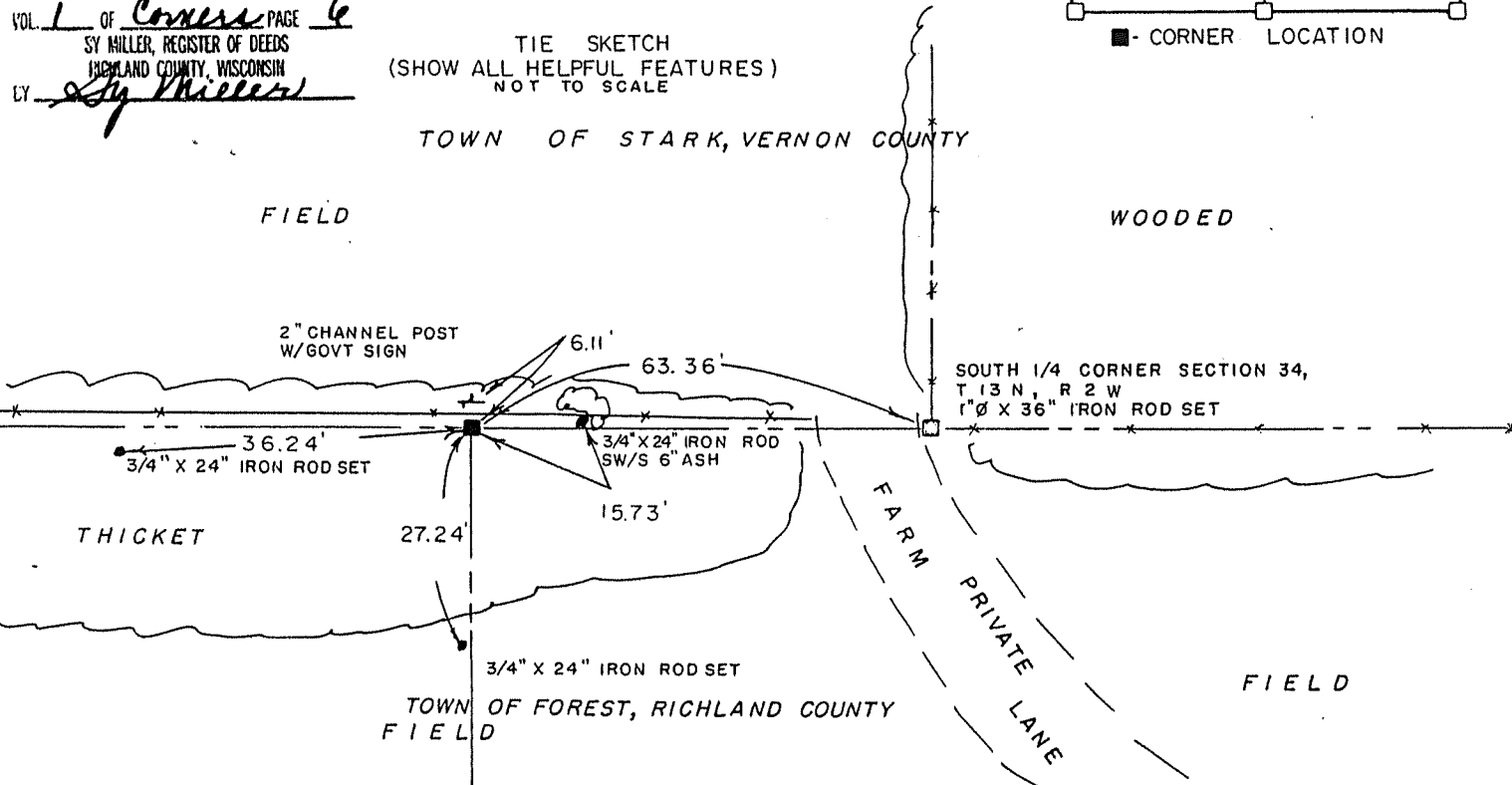
WOODED

SECTION 3, T 12 N, R 2 W
TOWN OF FOREST



NORTH

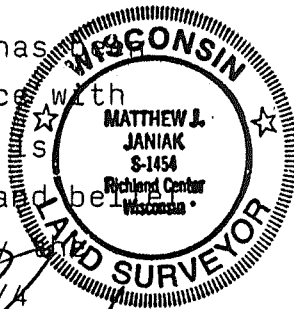
■ - CORNER LOCATION



SURVEYOR'S CERTIFICATE
STATE OF WISCONSIN)
RICHLAND COUNTY)SS

SEAL S-1454

I, Matthew J. Janiak, DO HEREBY CERTIFY THAT the above corner has been
established under my direction and supervision in accordance with
the information contained hereon and that this information is
correct and true to the best of my knowledge, information and belief.
This corner was set at the correction distance specified by the
original government survey and on line between the South 1/4
corner of section 34, T13N, R2W and the southwest corner of Section 34.



DATED THIS 20th DAY OF December, 19 90

REGISTERED LAND SURVEYOR

CORNER CODE

BB