

202057

Richland County

GOVERNMENT CORNER RECORD

NORTHEAST CORNER, SECTION 3, TOWNSHIP 12 NORTH, RANGE 2 ~~EAST~~ - WEST,
TOWN, CITY OR VILLAGE OF FOREST, RICHLAND CO.

TYPE OF MONUMENT: RICHLAND CAST IRON ELEVATION - M.S.L. DATUM _____

STATE PLANE COORDINATES: N _____

WISCONSIN SOUTH ZONE E _____

WITNESSES TO CORNER LOCATION

SEAN M. WALSH

PATRICK J. DEDERICH

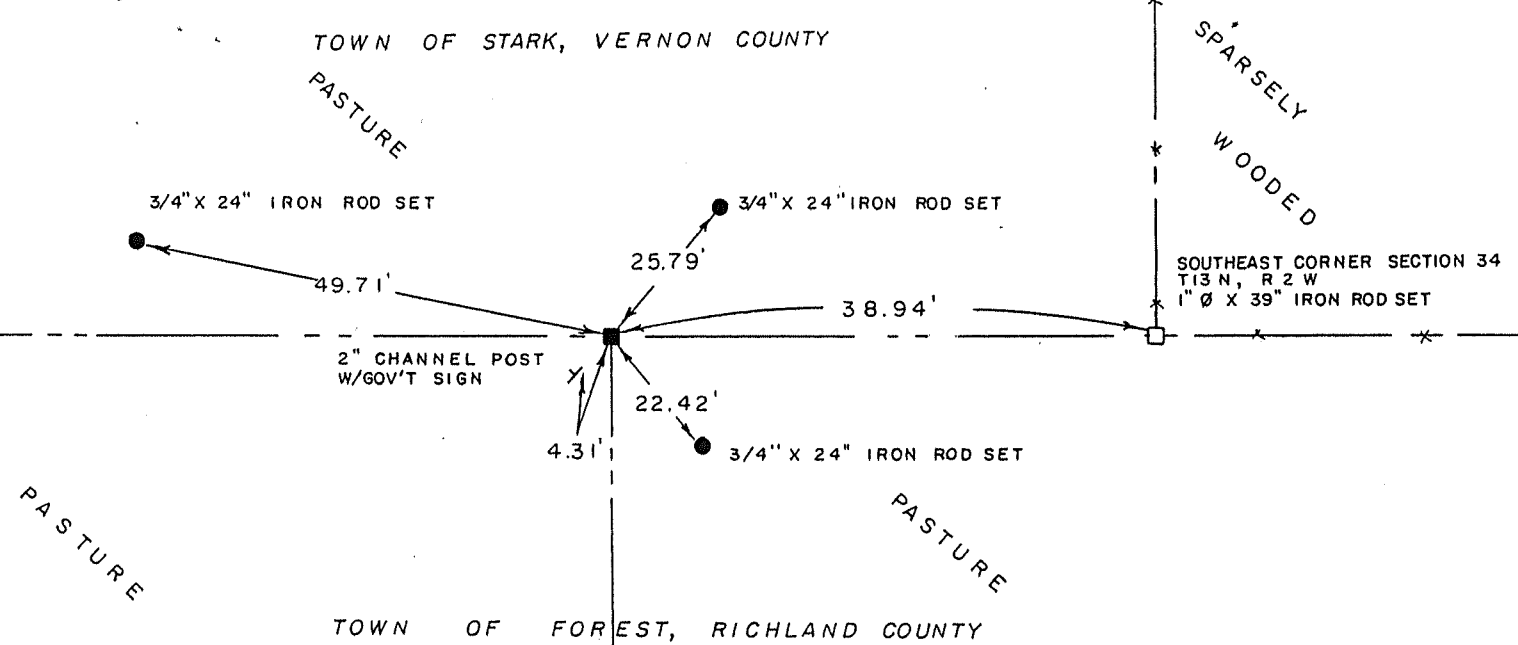
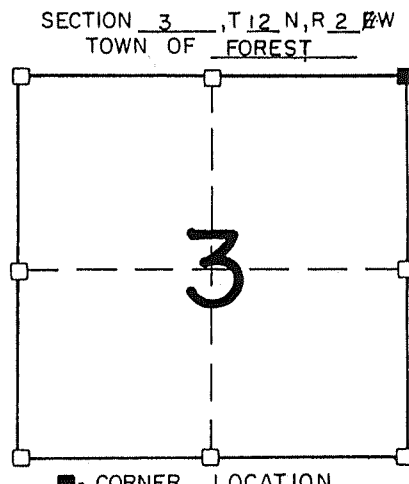
RECORDED

AT 9:00 O'CLOCK A M

DEC 31 1990

VOL. 1 OF Corner PAGE 5
BY Sy Miller
SY MILLER, REGISTER OF DEEDS
RICHLAND COUNTY - WISCONSIN

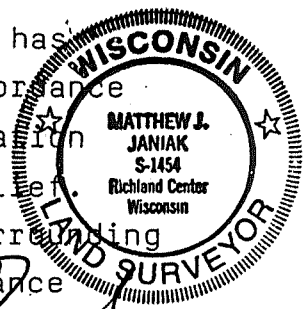
TIE SKETCH
(SHOW ALL HELPFUL FEATURES)



SURVEYOR'S CERTIFICATE
STATE OF WISCONSIN)
RICHLAND COUNTY) SS

SEAL S-1454

I, Matthew J. Janiak, DO HEREBY CERTIFY THAT the above corner has
been established under my direction and supervision in accordance
with the information contained hereon and that this information
is correct to the best of my information, knowledge and belief.
After an extensive search of the County records and the surrounding
area it was decided that the best location was at the distance



DATED THIS 30TH DAY OF DECEMBER, 1990

Matthew J. Janiak
REGISTERED LAND SURVEYOR

CORNER CODE

BB



COUNTY SURVEYORS USE ONLY



CORNER MAINTANENCE INFORMATION

CORNER APPROVED *Q* , DATE 12-21-90

[Signature]
RICHLAND COUNTY SURVEYOR, S-1454

ADDITIONAL INFORMATION IF NECESSARY

for the correction along the line as specified by the government survey from the Southeast corner of section 34, T 13 N, R22 W.