

203094

# Richland County

## GOVERNMENT CORNER RECORD

NE CORNER, SECTION 2, TOWNSHIP 12 NORTH, RANGE 2 ~~EAST~~ - WEST,  
TOWN, ~~WEST OF VILLAGE~~ OF FOREST, RICHLAND CO.

TYPE OF MONUMENT: RICHLAND CAST IRON ELEVATION - M.S.L. DATUM \_\_\_\_\_

STATE PLANE COORDINATES: N \_\_\_\_\_

WISCONSIN SOUTH ZONE E \_\_\_\_\_

WITNESSES TO CORNER LOCATION

SEAN M. WALSH

PATRICK J. DEDERICH

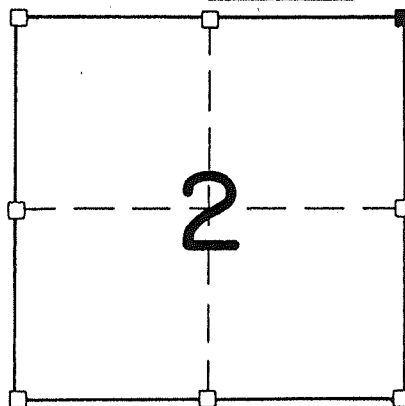
**RECORDED**

AT 8:30 O'CLOCK A M.

JUN 13 1991

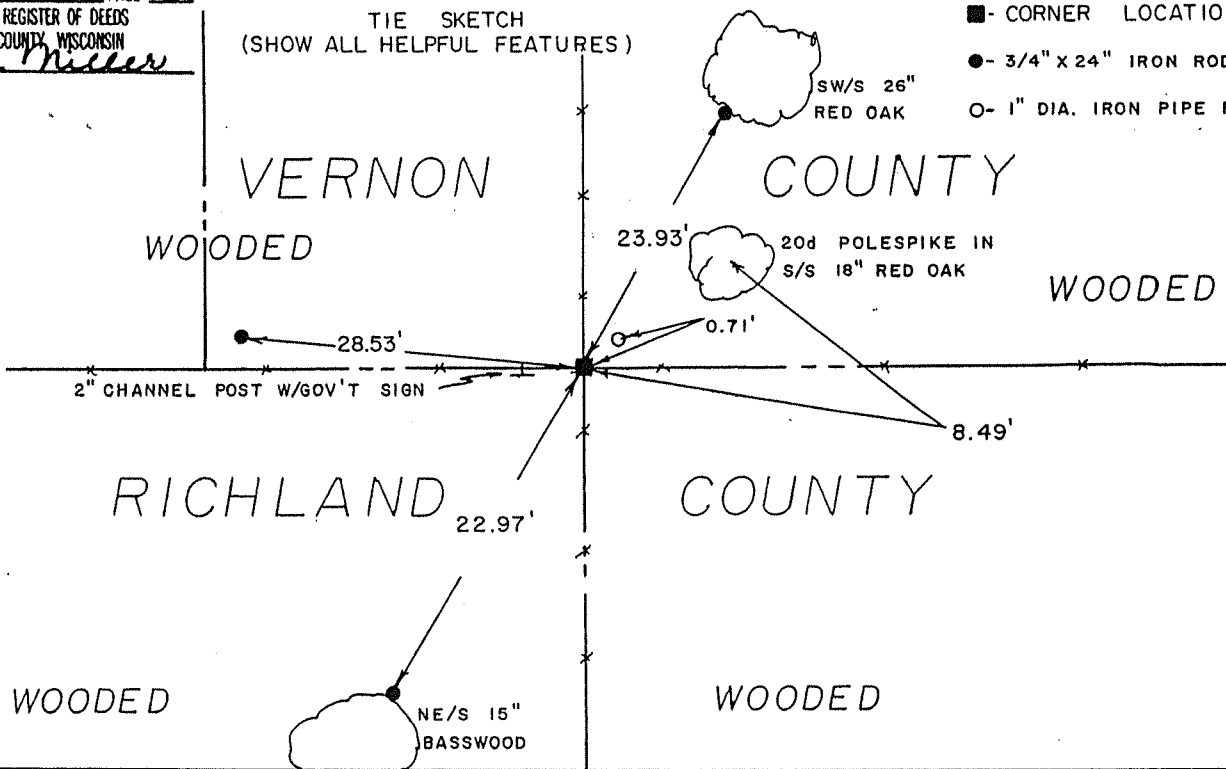
VOL. 1 OF Corners PAGE 3  
BY Sy Miller  
SY MILLER, REGISTER OF DEEDS  
RICHLAND COUNTY, WISCONSIN

SECTION 2, T 12 N, R 2 EW  
TOWN OF FOREST



■ - CORNER LOCATION  
● - 3/4" x 24" IRON ROD SET  
○ - 1" DIA. IRON PIPE FOUND

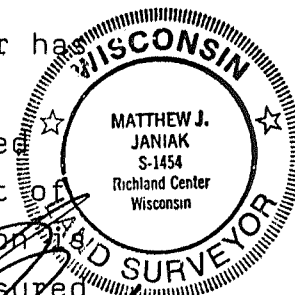
TIE SKETCH (SHOW ALL HELPFUL FEATURES)



SURVEYOR'S CERTIFICATE  
STATE OF WISCONSIN)  
RICHLAND COUNTY )SS

SEAL S-1454

I, Matthew J. Janiak, DO HEREBY CERTIFY THAT the above corner has  
been accepted and perpetuated under my direction and  
supervision in accordance with the information contained  
hereon and that this information is correct to the best of  
my knowledge, information and belief. the above location  
that of a stone found with a chiseled cross. stone measured



6"x10"x30".

DATED THIS 31<sup>ST</sup> DAY OF MAY, 19 91

REGISTERED LAND SURVEYOR

CORNER CODE

3

BB