

203093

Richland County

GOVERNMENT CORNER RECORD

N 1/4 CORNER, SECTION 1, TOWNSHIP 12 NORTH, RANGE 2 ~~EAST~~ - WEST,
TOWN, CITY OR VILLAGE OF FOREST, RICHLAND CO.

TYPE OF MONUMENT: RICHLAND CAST IRON ELEVATION - M.S.L. DATUM _____

STATE PLANE COORDINATES: N _____

WISCONSIN SOUTH ZONE E _____

WITNESSES TO CORNER LOCATION

SEAN M. WALSH

PATRICK J. DEDERICH

RECORDED

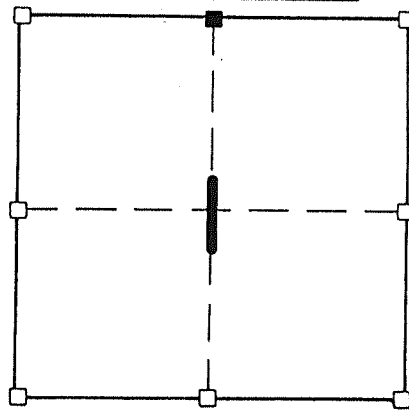
AT 8:30 O'CLOCK A M.

JUN 13 1991

VOL. 1 OF Corners PAGE 2
BY Sy Miller
SY MILLER, REGISTER OF DEEDS
RICHLAND COUNTY, WISCONSIN

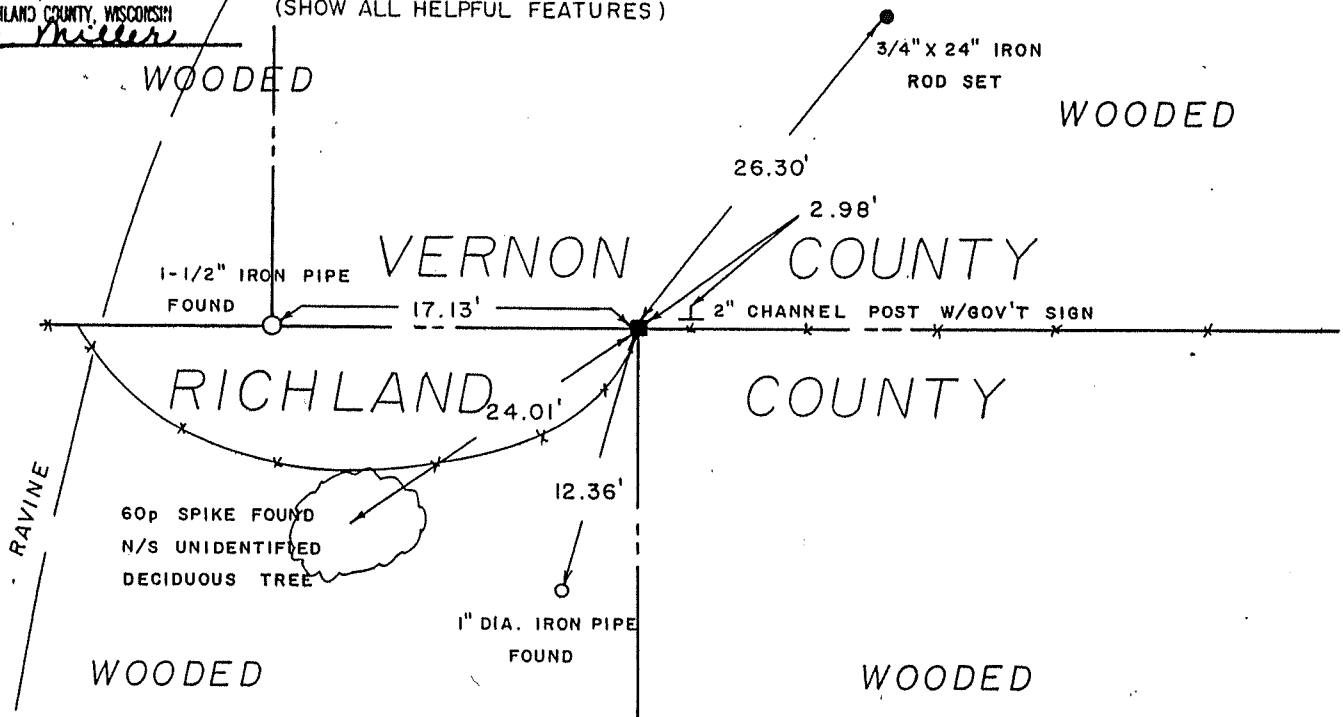
TIE SKETCH
(SHOW ALL HELPFUL FEATURES)

SECTION 1, T 12 N, R 2 W
TOWN OF FOREST



NORTH

■ - CORNER LOCATION

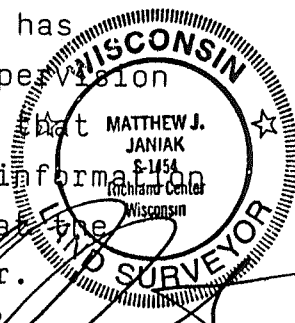


SURVEYOR'S CERTIFICATE

STATE OF WISCONSIN)
RICHLAND COUNTY) SS

SEAL S- 1454

I, Matthew J. Janiak, DO HEREBY CERTIFY THAT the above corner has
been accepted and perpetuated under my direction and supervision
in accordance with the information contained hereon and that
this information is correct and true to the best of my information,
knowledge and belief. the above corner has been placed at the
location of a 1"x30" iron pipe found at the fence corner.



DATED THIS 31st DAY OF May, 19 91

REGISTERED LAND SURVEYOR

CORNER CODE