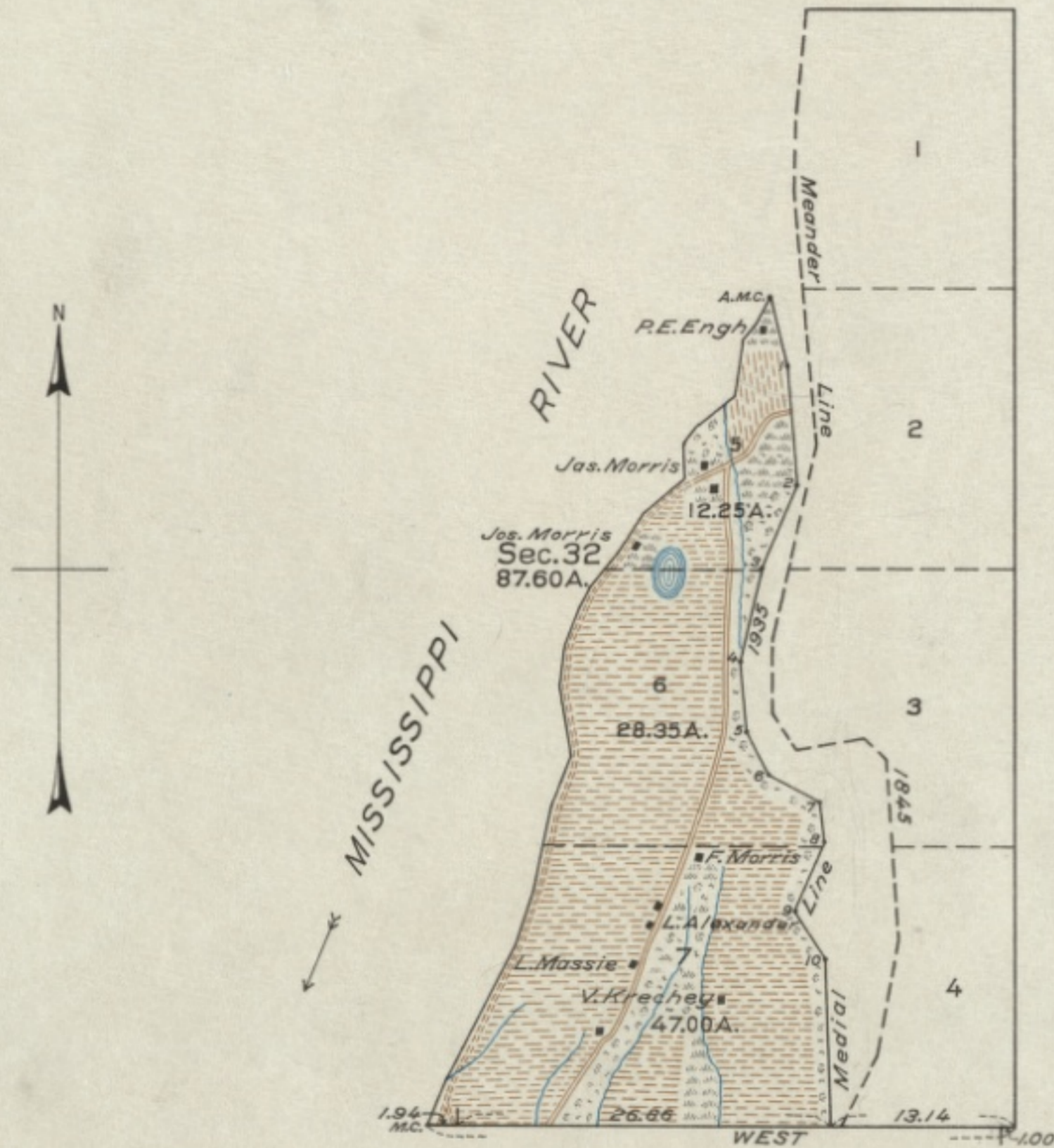


TOWNSHIP NO. 13 NORTH, RANGE NO. 7 WEST, 4TH PRINCIPAL MERIDIAN, WISCONSIN.

PLAT OF AN ISLAND IN THE MISSISSIPPI RIVER, SECTION 32.



MEMORANDUM.

THIS PLAT REPRESENTS THE SURVEY OF AN ISLAND IN THE MISSISSIPPI RIVER IN SECTION 32, WHICH WAS NOT INCLUDED IN THE PRIOR OFFICIAL SURVEYS IN THIS TOWNSHIP AS REPRESENTED ON THE PLATS APPROVED MAY 26, 1836, APRIL 8, 1847, AND MAY 31, 1847.

THE SURVEY WAS EXECUTED PURSUANT TO AUTHORITY CONTAINED IN GENERAL LAND OFFICE LETTER 1427294 "E" DATED DECEMBER 21, 1934, WHICH BEARS DEPARTMENTAL APPROVAL UNDER DATE OF DECEMBER 28, 1934.

OFFICE OF U.S. SUPERVISOR OF SURVEYS.  
DENVER, COLORADO, JUNE 23, 1936.

THE ABOVE PLAT OF AN ISLAND IN THE MISSISSIPPI RIVER IN SECTION 32, TOWNSHIP NO. 13 NORTH, RANGE NO. 7 WEST OF THE FOURTH PRINCIPAL MERIDIAN, IN THE STATE OF WISCONSIN, IS STRICTLY CONFORMABLE TO THE FIELD NOTES OF THE SURVEY THEREOF, WHICH HAVE BEEN EXAMINED AND APPROVED.

*Wm. H. Brown*  
U.S. SUPERVISOR OF SURVEYS.

SCALE: 10 CHAINS TO AN INCH.

AREA SURVEYED, 87.60 ACRES.

LINES DESIGNATED	BY WHOM SURVEYED	GROUP NO.	MILEAGE		WHEN SURVEYED		
			DATE	MLS.	CHS.	BEGUN	COMPLETED
EXTERIOR	HAL D. CRAIG,	38	JUNE 19,	0	41.94	NOV. 8,	NOV. 16,
MEANDER	U. S. SURVEYOR.		1935.	1	50.85	1935.	1935.

DEPARTMENT OF THE INTERIOR.  
GENERAL LAND OFFICE.  
WASHINGTON, D. C., MARCH 11, 1937.

THE SURVEY REPRESENTED BY THIS PLAT, HAVING BEEN CORRECTLY EXECUTED IN ACCORDANCE WITH THE REQUIREMENTS OF LAW AND THE REGULATIONS OF THIS OFFICE, IS HEREBY ACCEPTED.

*J. C. Barrett*  
ACTING ASSISTANT COMMISSIONER.

RECEIVED  
SEP 18 1937  
U.S. DEPARTMENT OF THE INTERIOR