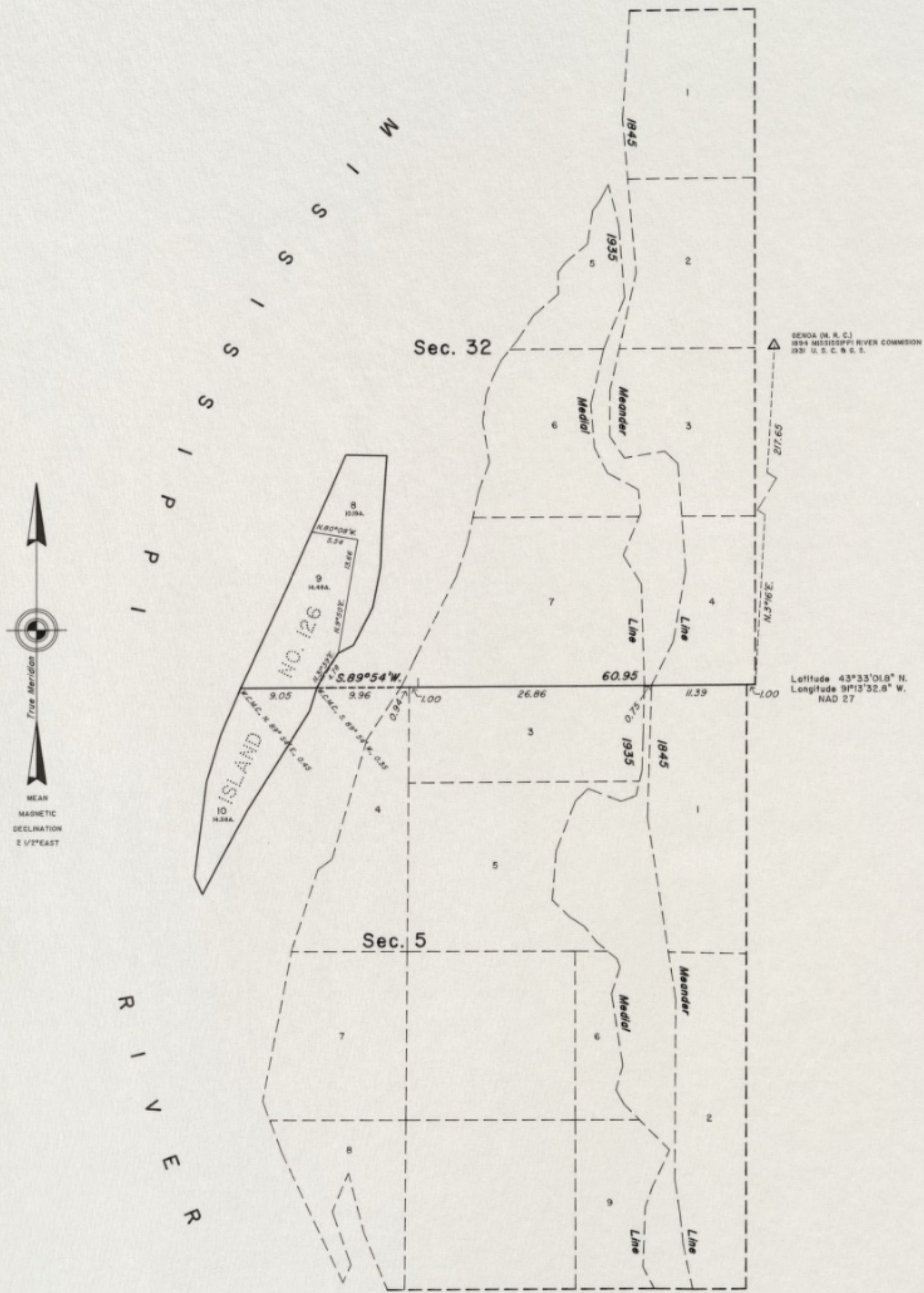


5-12N-7W
32-13N-7W

DUPLICATE

TOWNSHIPS 12 AND 13 NORTH, RANGE 7 WEST, FOURTH PRINCIPAL MERIDIAN, WISCONSIN. RETRACEMENT, EXTENSION SURVEY AND SURVEY OF AN ISLAND IN THE MISSISSIPPI RIVER



A history of surveys is contained in the field note record.

This plat represents the retracement of a portion of the boundary between Tps. 12 and 13 N., R. 7 W., and the extension survey of a portion of the boundary between Tps. 12 and 13 N., R. 7 W., and the survey of an island in the Mississippi River in Tps. 12 and 13 N., R. 7 W., of the Fourth Principal Meridian, Wisconsin.

The survey was executed by Anthony E. Carrow, Cadastral Surveyor, beginning September 19, 1991 and completed September 25, 1991, pursuant to Special Instructions dated September 9, 1991 and approved September 9, 1991 for Group No. 144, Wisconsin.

Except as shown hereon, the lottings and areas are as shown on the plats approved May 26, 1846, April 8, 1847, May 31, 1847, and March 11, 1937.

GENOA (N. R. C.)
1894 MISSISSIPPI RIVER COMMISSION
1937 U. S. C. & G. S.

Latitude $43^{\circ} 33' 01.8''$ N.
Longitude $91^{\circ} 13' 32.8''$ W.
NAD 27

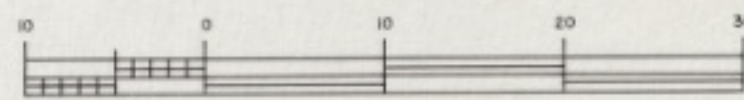


UNITED STATES DEPARTMENT OF THE INTERIOR
BUREAU OF LAND MANAGEMENT
Alexandria, Virginia April 8, 1992

This plat is strictly conformable to the approved field notes, and the survey, having been correctly executed in accordance with the requirements of law and the regulations of this Bureau, is hereby accepted.

For the Director

Stephen G. Kopyak
Chief Cadastral Surveyor
Eastern States Office



Area Surveyed
T. 12 N., R. 7 W. = 16.58 Acres
T. 13 N., R. 7 W. = 24.67 Acres
Total = 39.25 Acres