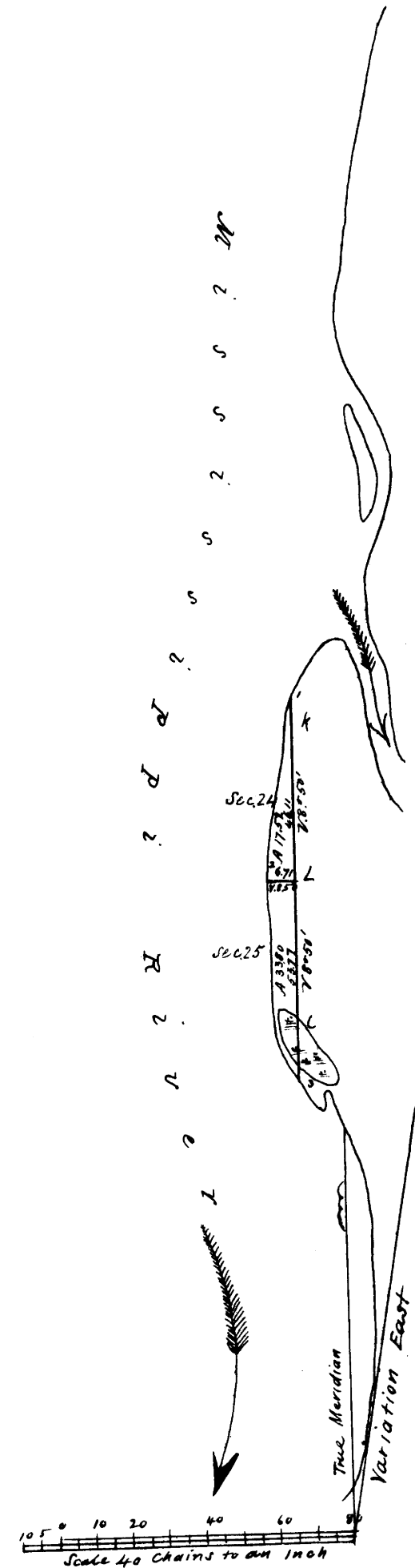


Township N<sup>o</sup> 14 N, Range N<sup>o</sup> 8 West, 4<sup>th</sup> Mer.

Recd with J. 9<sup>th</sup> letter of 8<sup>th</sup> April. 1847



Total number of Acres 51.32

Surveys Designated	By Whom Surveyed	Date of Contract	Amount of Surveys M. Ch <sup>s</sup> Lks	When Surveyed	When Charged in the Sur. Genl's acct
Township lines	A. L. Brown	October 9 <sup>th</sup> 1846	1 " 19 " 88	January 1847	
Subdivisions	A. L. Brown	October 9 <sup>th</sup> 1846	1 " 28 " 26	January 1847	

The above Map of Township No 14 North of Range No 8 West of the 4<sup>th</sup> Principal Meridian Wisconsin Territory is strictly conformable to the files & notes of the Survey thereof on file in this Office, which have been examined and approved.

Surveyor General's Office }  
Dubuque April 8<sup>th</sup> 1847 } *Leon Jones* Sur. Genl.