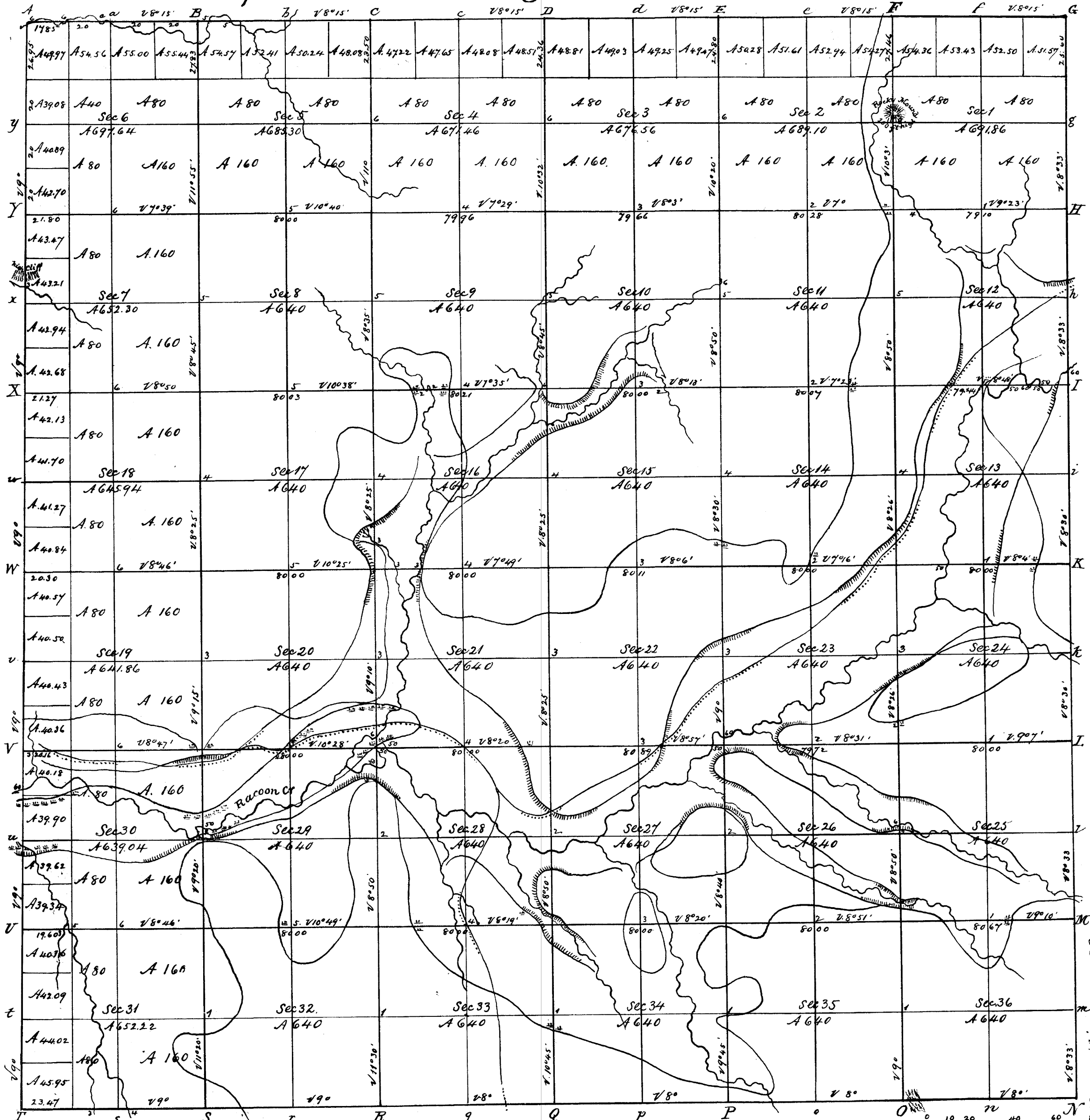


Rec'd with S.G. letter of 8th April 1847.

Township N^o 14 N, Range N^o 6 West 4th Mer.



Vol. 33-B.

Total number of Acres 23,343.28

Surveys Designated	By Whom Surveyed	Date of Contract	Amount of Surveys	When Surveyed	Whom ^d for and when the Sur ^r Gen ^l acc ^t
Township Lines	Wreck Biggs	Aug 16 th 1845	M. Ch. ^s 18. 70. 40	October 1845	
Subdivisions	A. Brown	Oct 9 th 1846	60. 31. 13	October 1846	
Township line	J. E. Whitchee	November 2 ^d 1844	6. 03. 47	November 1844	

The above Map of Township N^o 14 North of Range N^o 6 West of the 4th Principal Meridian Wisconsin Territory is strictly conformable to the field notes of the survey thereof on file in this Office which have been examined and approved.

Surveyor General's Office
Dubuque April 8th 1847

Geo. W. Jones Sur^r Gen^l