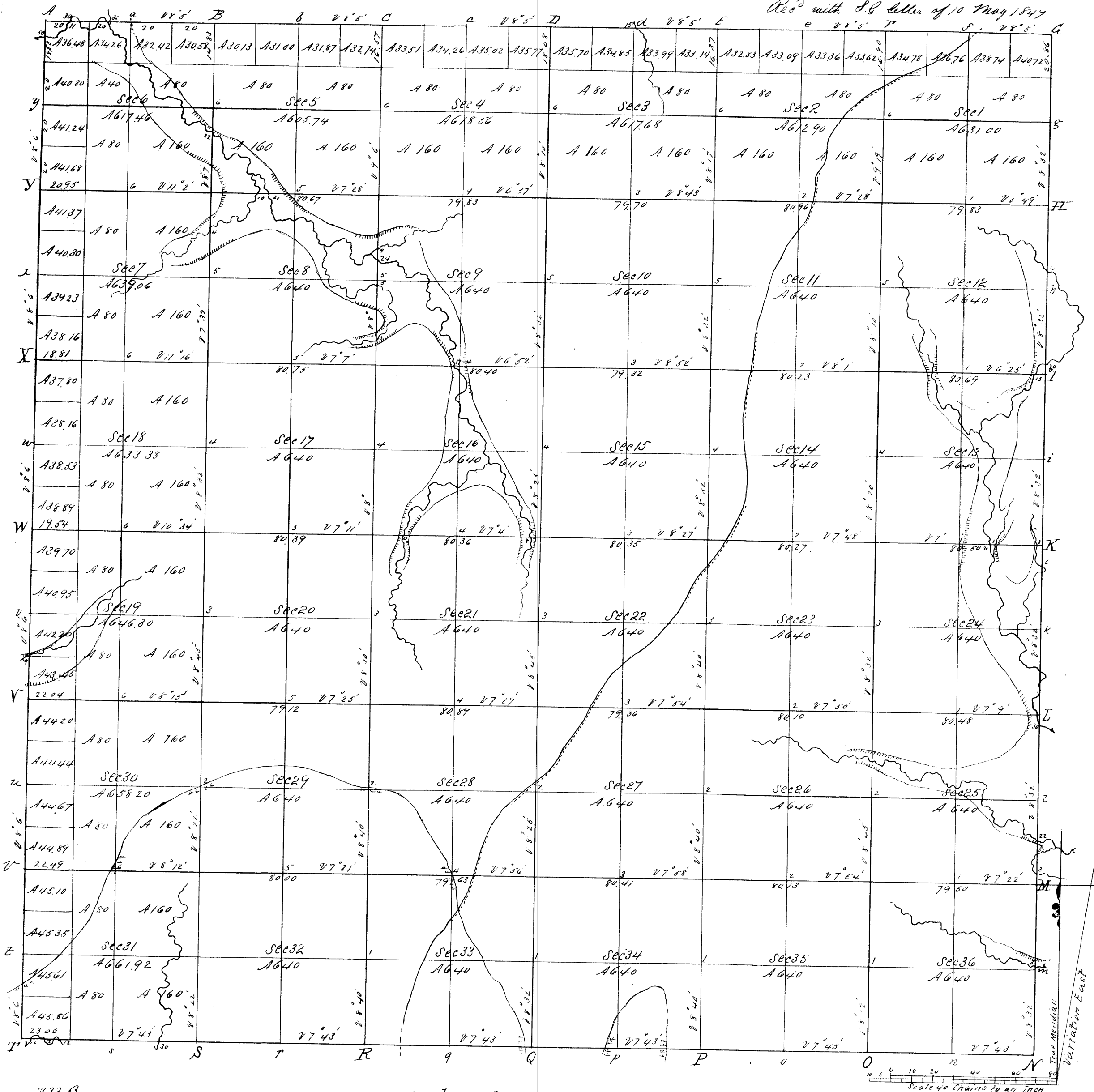


# Township N<sup>o</sup> 14 N. Range N<sup>o</sup> 4 West, 4<sup>th</sup> Mer.

Rec<sup>d</sup> with S.G. letter of 10 May 1847



433 B

Total number of Acres 22 942.20

Surveys Designated	By Whom Surveyed	Date of Contract	Amount of Surveys	When Surveyed	When p <sup>d</sup> for and ch <sup>d</sup> in the Sur <sup>r</sup> Gen <sup>l</sup> 's acc <sup>t</sup>
E W & N Township Lines	Uriah Beags	August 16 <sup>th</sup> 1845	M. ch <sup>d</sup> Lks 17 79 .50	October 1845	
Subdivisions	Henry Maddin	October 10 <sup>th</sup> 1846	59 70 .45	December 1846	
S Township line	J. E. White	November 2 <sup>d</sup> 1844	6.03 .00	November 1844	

The above Map of Township N<sup>o</sup> 14 North of Range N<sup>o</sup> 4 West of the 4<sup>th</sup> Principal Meridian Wisconsin Territory is strictly conformable to the field notes of the survey thereon file in this Office which have been examined and approved

Surveyor General's Office  
 Dubuque May 10<sup>th</sup> 1847  
*Geo W Jones* Sur<sup>r</sup> Gen<sup>l</sup>.