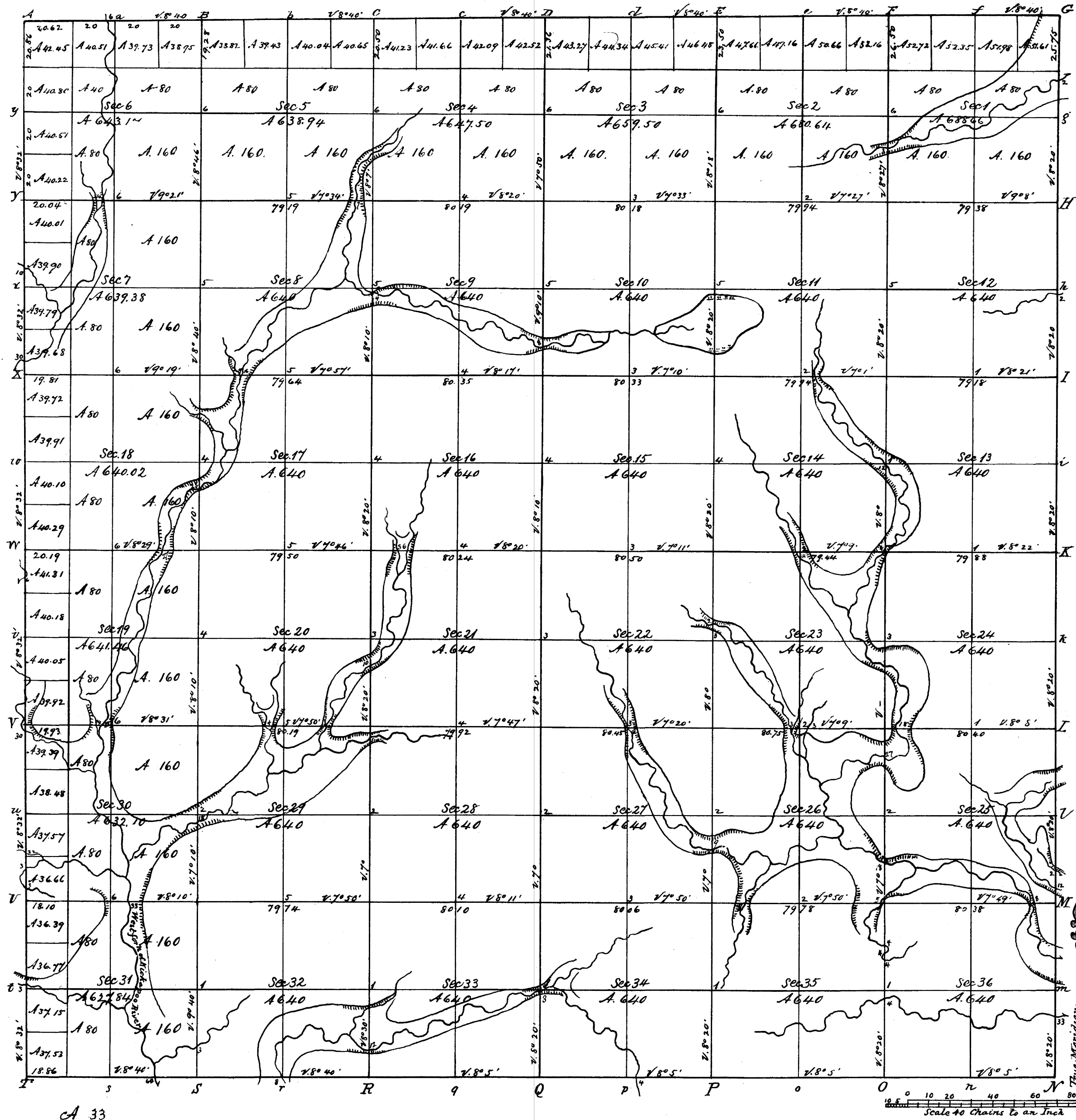


Rec<sup>d</sup> with S.G.'s letter of 10<sup>th</sup> May 1847.

Township N<sup>o</sup> 14 N. Range N<sup>o</sup> 3 West, 4<sup>th</sup> Mer.



Total number of Acres 23,139.21

Surveys Designated.	By Whom Surveyed	Date of Contract	Amount of Surveys	When Surveyed	When <sup>ap</sup> for and <sup>ch</sup> in the Sur <sup>g</sup> Gen <sup>l</sup> 's acc <sup>t</sup>
E.W.M	Uriah Riggs	August 16 <sup>th</sup> 1845	M. ch <sup>s</sup> Lks. 18, 07. 23	October 1845	
S	Henry W.addin	October 10 <sup>th</sup> 1846	60. 08. 86	Oct Nov & Dec 1846	
S	J. E. Hitcher	Nov 3 <sup>d</sup> 1844	5. 78. 86	April 1845	

The above Map of Township N<sup>o</sup> 14 North of Range N<sup>o</sup> 3 West of the 4<sup>th</sup> Principal Meridian Wisconsin Territory is strictly conformable to the field notes of the survey thereof on file in this Office which have been examined and approved

Surveyor General's Office  
Dubuque May 10<sup>th</sup> 1847

Geo. Jones Sur<sup>g</sup> Gen<sup>l</sup>