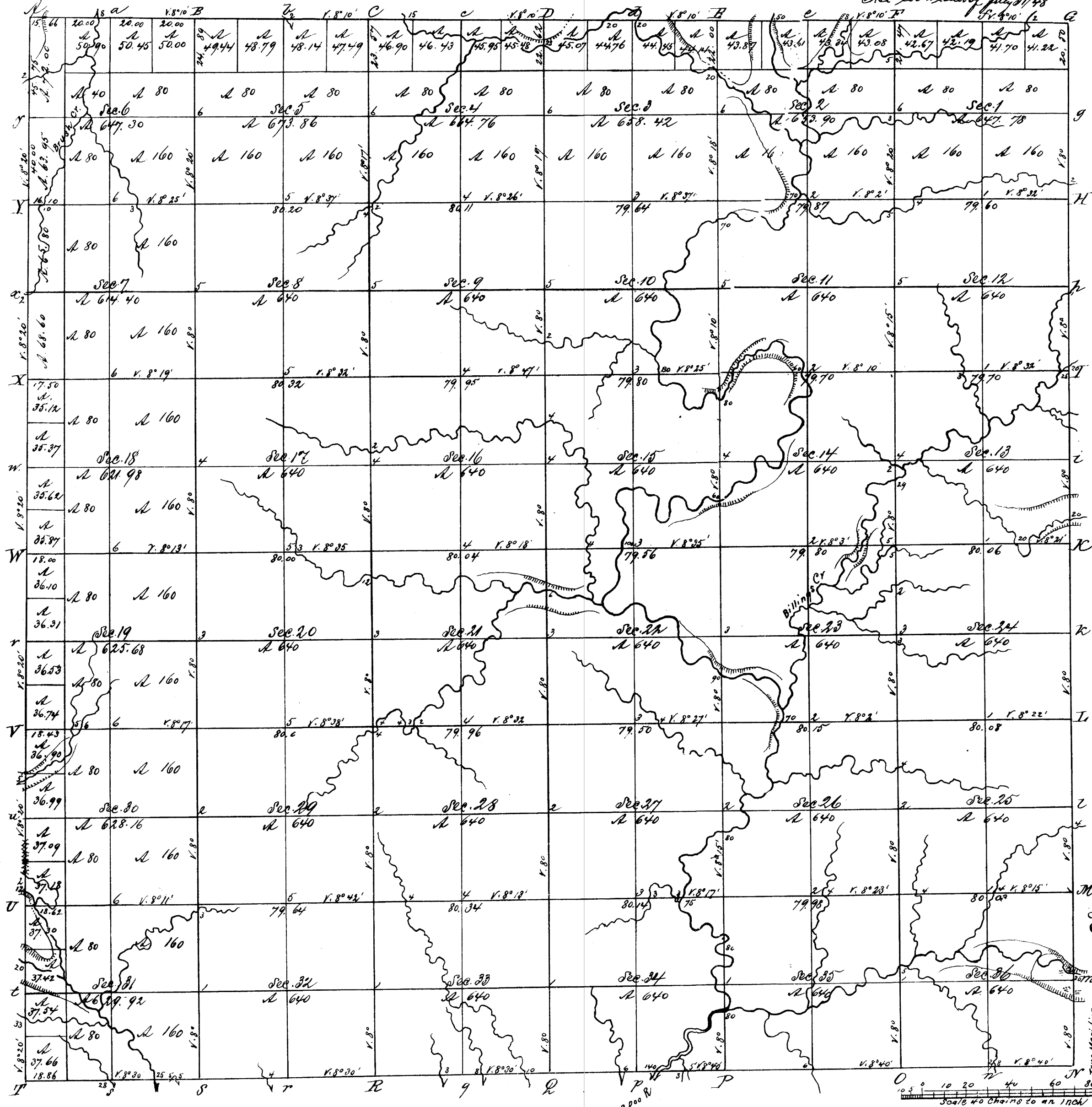


Township N^o 14 N, Range N^o 2 West 4th Mer.

See with letter of July 31/48



Vol. 33 A

Total number of Acres 23,066.16

Surveys Designated	By Whom Surveyed	Date of Contract	Amount of Surveys	When Surveyed	When put for and ch ^d in the Sur Gen's acc ^t
Township lines	J. G. Whitcheu	2 nd November 1844	M. Ch ^s 243.86	April 1845	
Subdivisions	Noah Phelps	14 th June 1847	60 " 01 " 42	October 1847	
E. N. W. Township lines	Uriah Rogge	16 th August 1845	18 " 01 " 91	October 1845	

The above Map of Township N^o 14 North of Range N^o 2 West of the 4th Principal Meridian Wisconsin is strictly conformable to the field notes of the survey thereof on file in this Office which have been examined and approved
 Surveyor General's Office } Geo W Jones Sur Gen
 Dubuque, July 31st 1848