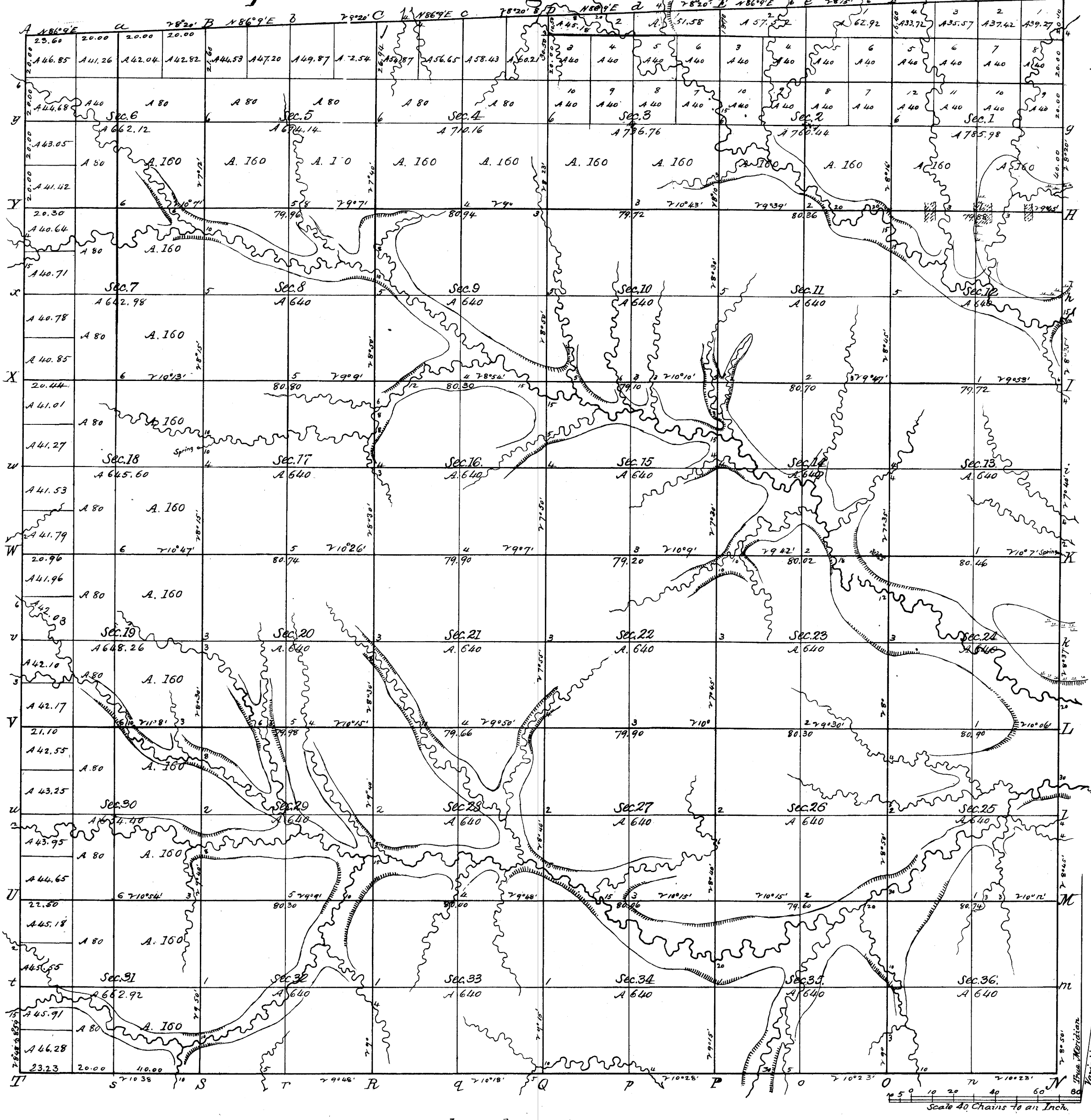


Township N^o 14 N. Range N^o 1 East, 4th Mer. Rec^d with letter of May 11/52



Total number of Acres, 23,583.76

V34

Surveys Designated	By Whom Surveyed	Date of Contract	Amount of Surveys	When Surveyed	When A ^d for and ch ^d in the Sur ^g Gen ^l 's acct.
Township lines	Sturte & Sargent	May 9th 1831	M. Ch ^s 12 " 23 " 70	July 1851	
Subdivisions	John E. Davidson	Oct. 28th 1831	60 " 57 " 68	Dec. 1831 & Jan. 1832	
Township line	J. E. Whitaker	Nov 2nd 1844	6 " 3 " 28	March 1845	
"	Joshua Hathaway	Feb. 18th 1839	6 " 0 " 00	May 1839	

The above Map of Township N^o 14 North of Range N^o 1 East of the 4th Principal Meridian State of Wisconsin is strictly confirmed to the field notes of the survey thereof on file in this Office, which have been examined and approved.

Surveyor General's Office,
Dubuque May 11th 1852.

George B. Sargent
Sur. Genl.