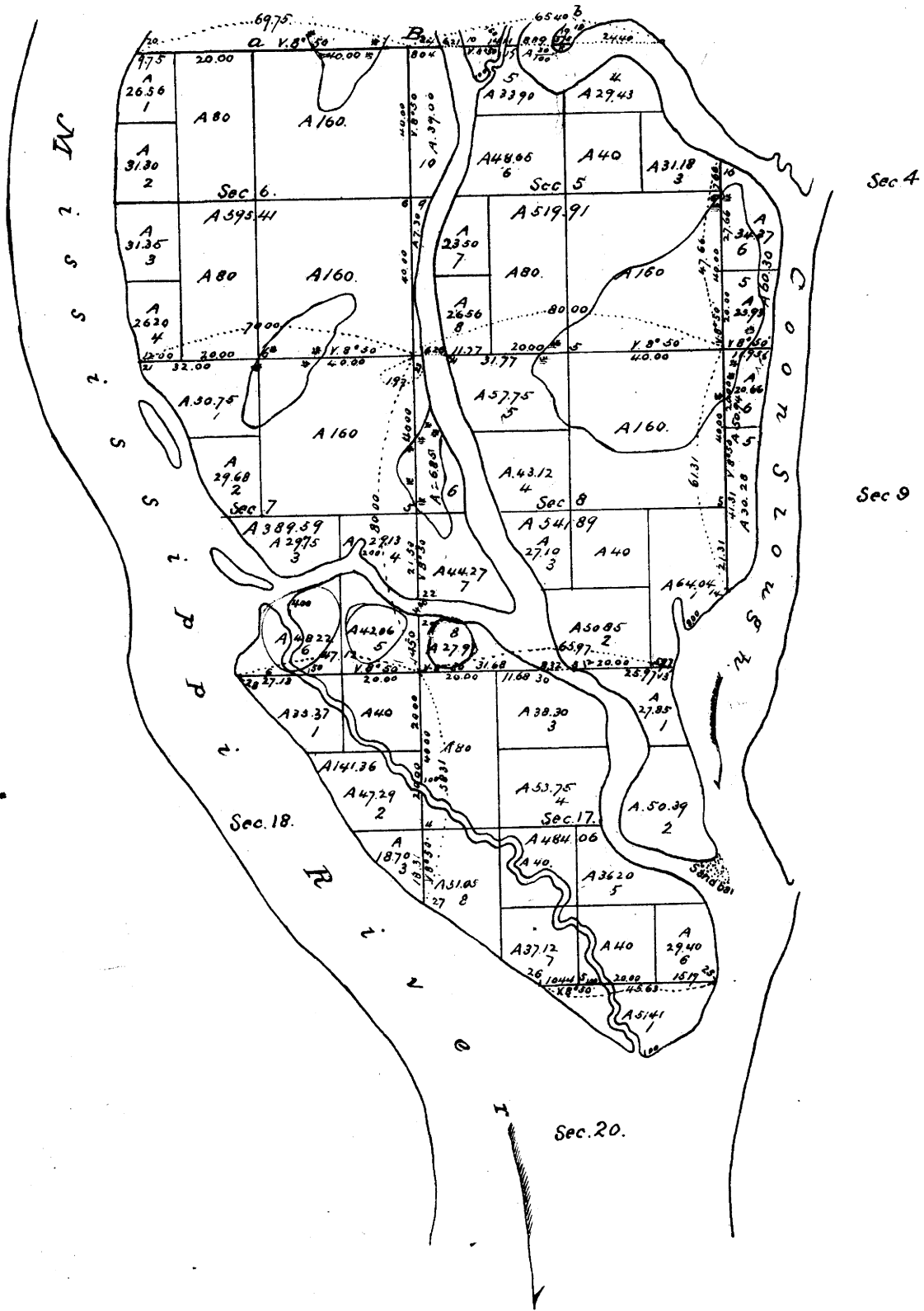


Township N<sup>o</sup> 13 N., Range N<sup>o</sup> 7 West. 4<sup>th</sup> Mer.

Rec<sup>d</sup> with  $\frac{1}{4}$  letter of 31 May 1847



33 B

Total number of Acres 2534.87.

Surveys Designated.	By Whom Surveyed.	Date of Contract	Amount of Surveys M. Ch. <sup>s</sup> Lk. <sup>s</sup>	When Surveyed.	When Charged in the Sur <sup>g</sup> Gen <sup>l</sup> 's acc <sup>t</sup>
Township lines	A & Brown	October 9 <sup>th</sup> 1846	1 55 . 15	January 1847	
Subdivisions.	A & Brown	October 9 <sup>th</sup> 1846	24 . 22 . 13	January 1847	

Scale 40 Chains to an Inch.

The above Map of Township N<sup>o</sup> 13 North of Range N<sup>o</sup> 7 West. 4<sup>th</sup> Meridian Wisconsin Territory is strictly conformable to the field notes of the survey thereof on file in this Office which have been examined and approved

Surveyor General's Office, } Geo. W. Jones Sur<sup>g</sup> Gen<sup>l</sup>  
Dubuque May 31<sup>st</sup> 1847