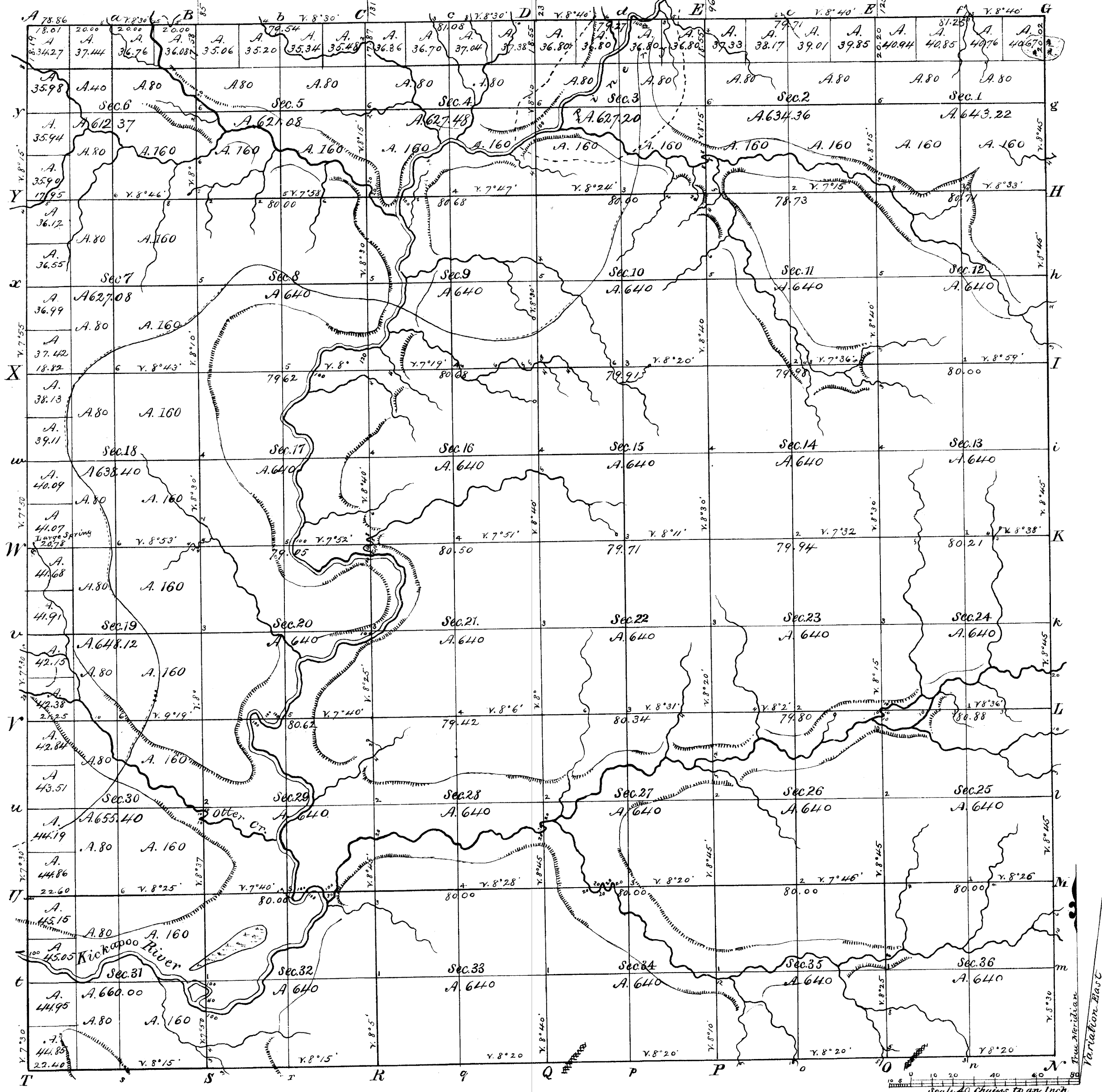


Township N<sup>o</sup> 13 N. Range N<sup>o</sup> 2 West, 4<sup>th</sup> Mer. Red with J. E. White 5 June 1846



Total number of acres 22994.71

Surveys Designated	By Whom Surveyed	Date of Contract	Amount of Survey	When Surveyed	When paid for and ok'd in the Sur. Gen's acct
Township lines	J. E. White	November 2 1844	M. Chs. 24 00	March & April 1845	
Subdivisions	A. L. Brown	December 1 1845	59. 74. 93	January 1846	
Brown's surveys paid for 23 <sup>d</sup> June 1846 per G. L. Office Report No 306					

The above Map of Township N<sup>o</sup> 13 North of Range N<sup>o</sup> 2 West 4<sup>th</sup> Principal Meridian Wisconsin Territory, is strictly conformable to the field notes of the survey thereof on file in this Office, which have been examined and approved

Surveyor General's Office  
Dubuque June 5. 1846.

Geo Jones Sur. Genl.