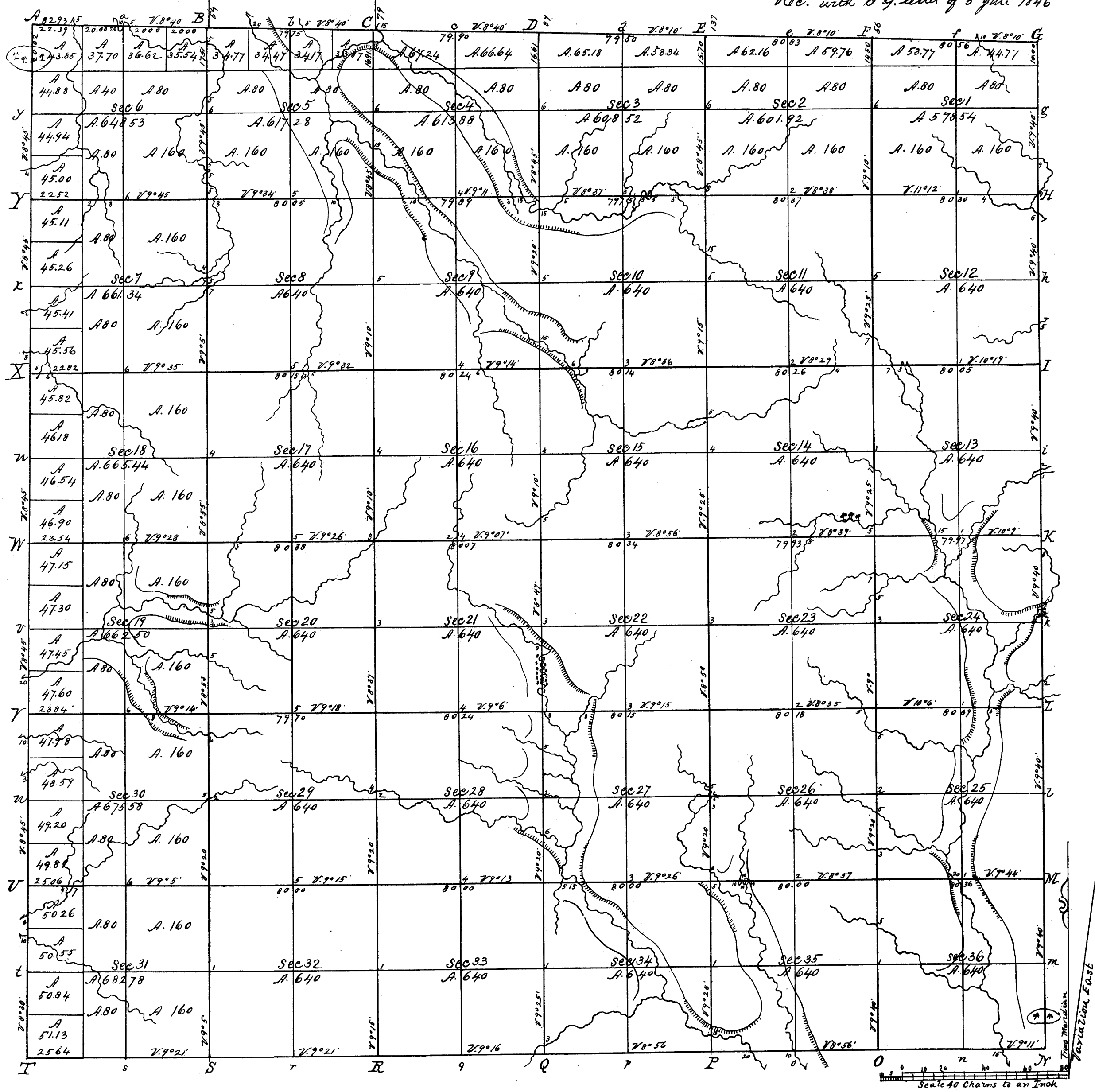


Township N^o 13 N., Range N^o 1 West, 4th Mer.

Rec^d. with S.G. letter of 5 June 1846



V33a

Total number of Acres 23,023.31

Surveys Designated	By Whom Surveyed	Date of Contract	Amount of Surveys	When Surveyed	When paid for and ch ^d in the Sur ^r Com ^{ty} ac ^t
S. W. & J. Township lines	J. E. Whiteaker	November 2 1844	M. Ch ^s 18.08 Lks 57	March & April 1845	
Subdivisions	A. L. Brown	December 1. 1845	60.02 22	January 1846	
E Township line	Joshua Hallaway	February 18. 1837	5.70 .00	May. 1837	2 nd Qr 1840

The above Map of Township N^o 13 North, of Range N^o 1 West, 4th Principal Meridian Wisconsin Territory, is strictly conformable to the field notes of the survey thereof on file in this Office, which have been examined and approved.

Surveyor General's Office
Dubuque, June 5. 1846

Geo. Jones Sur^r Gen^l