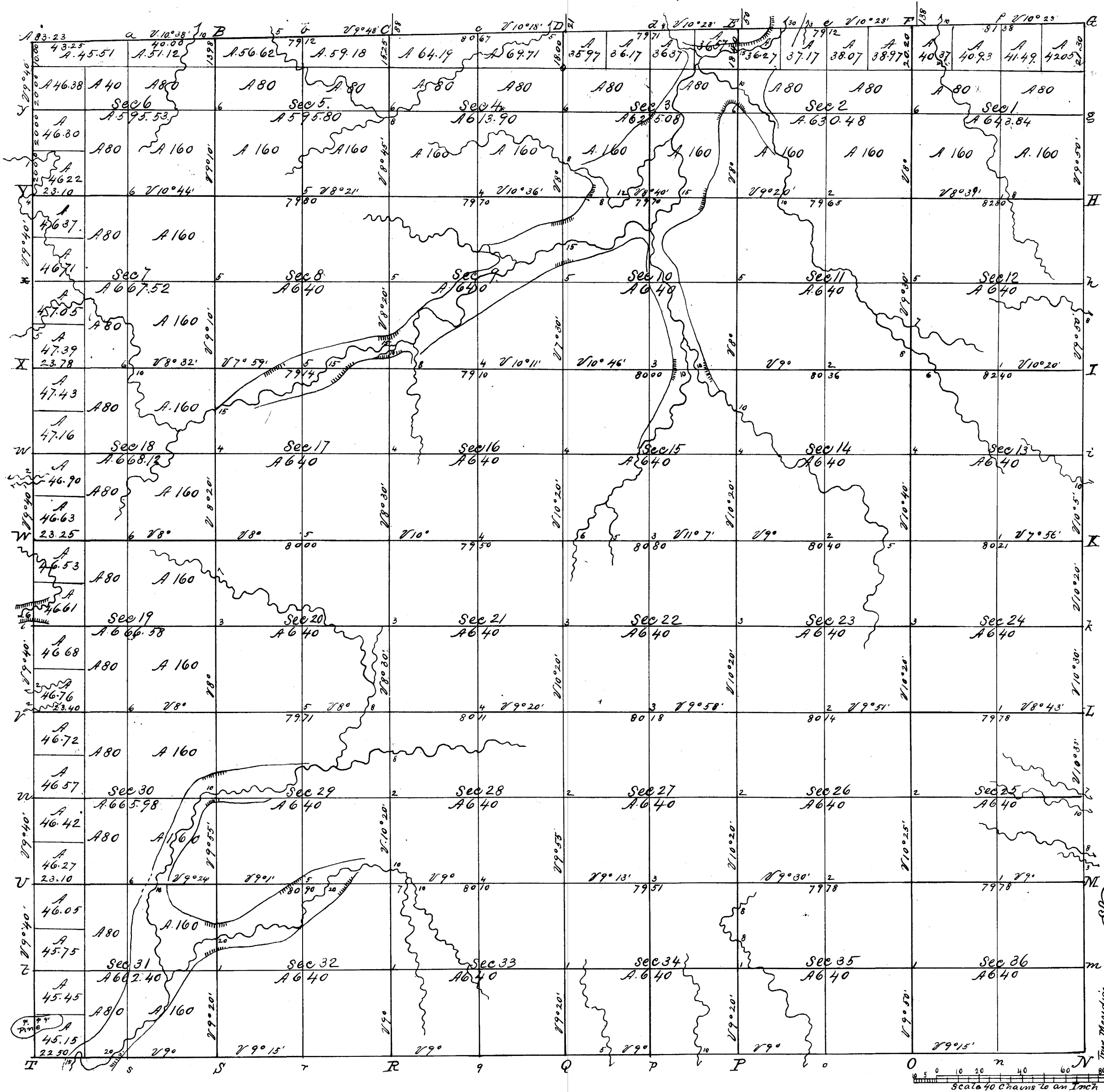


Township N. 13 N. Range N. 1 East, 4<sup>th</sup> Mer.

Rec'd with S.G. letter of 30 July 1845

11



T. 34.

Total number of Acres 23,035.23

Surveys Designated	By Whom Surveyed	Date of Contract	Amount of Surveys	When Surveyed	When paid for and acknowledged in the Sur. Gen's acct
Township lines	J. S. Whiteaker	Nov. 2 <sup>d</sup> 1844	71 cks 18 07 03	1 <sup>st</sup> Qr. 1845	
Subdivisions	James M. Marsh	March 13, 1845	60.02 46	April 1845	13 Aug. 1845. Rep. 155
Township line	J. Hathaway	Feb. 18 1839	5.76 00	May 1839	2 <sup>d</sup> Qr. 1840

The above Map of Township N. 13 North of Range N. 1 East 4<sup>th</sup> Principal Meridian, Wisconsin Territory is strictly conformable to the field notes of the survey thereof on file in this Office, which have been examined and approved.

Surveyor General's Office } Geo. W. Jones Sur. Gen.  
Dubuque July 15<sup>th</sup> 1845 }