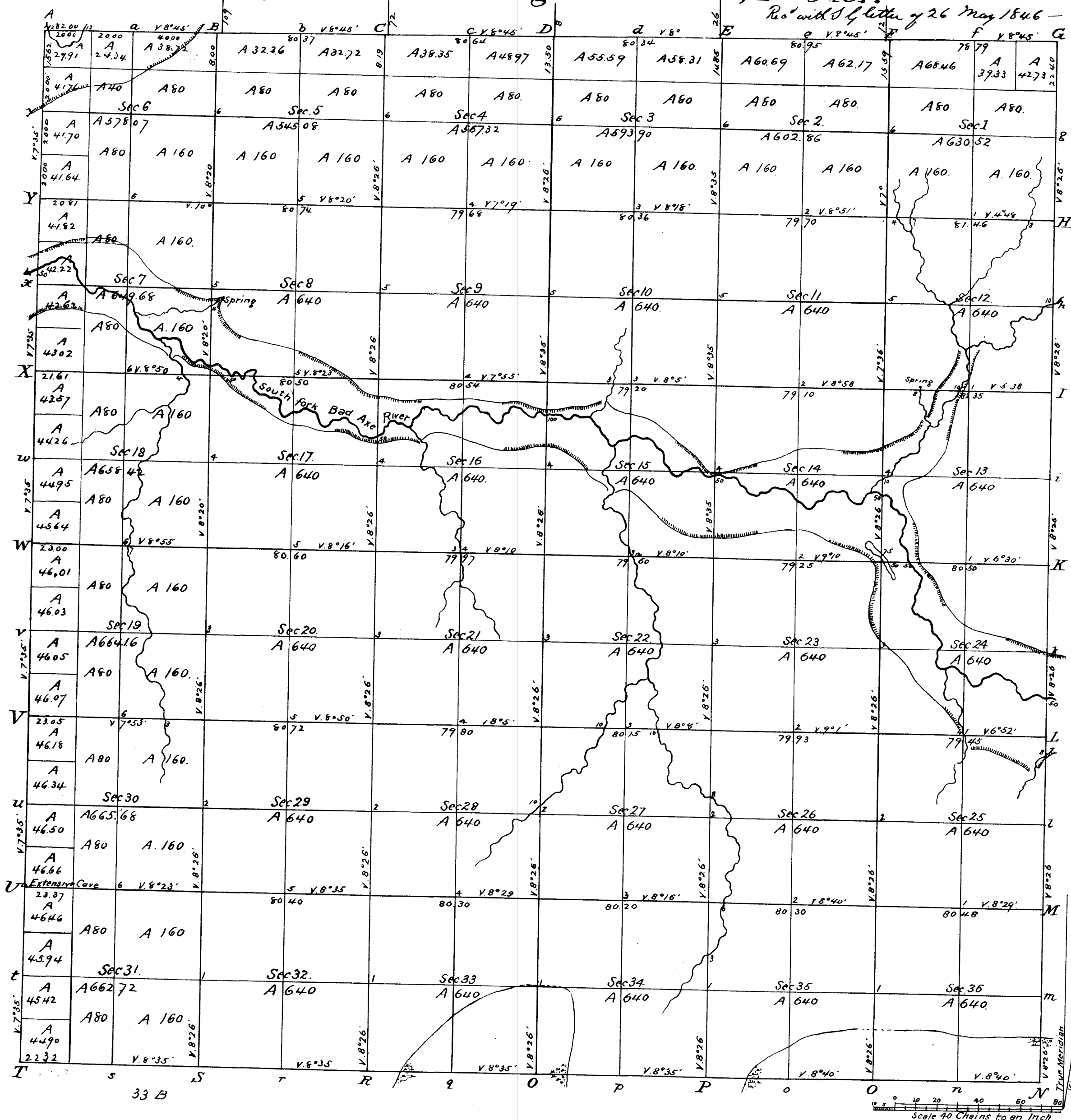


Township No 12 N., Range No 6 West, 4th Mer.

Rec'd with D. G. letter of 26 May 1846 -



Total number of Acres 22818.41

Surveys Designated	By Whom Surveyed	Date of Contract	Amount of Surveys	When Surveyed	When ^d For and ch ^d in the Sur ^{Gen} 's acc ^s
E W & N Township lines Subdivisions	J. E. Whitaker	November 2 1844	M chs Lks	November 1844	
		May 15 1846 Date of Bond	18 00 02		
S Township line	W. A. Beut	October 24 1840	59 56 75	October 1845	1840 & 1841
			6 02 32	January 1840	

The above Map of Township No 12 North of Range No 6 West, 4th Principal Meridian Wisconsin Territory is strictly conformable to the field notes of the survey thereof on file in this Office which have been examined and approved.

Surveyor General's Office
Dubuque, May 26, 1846.

Geo. Jones Sur^{Gen}