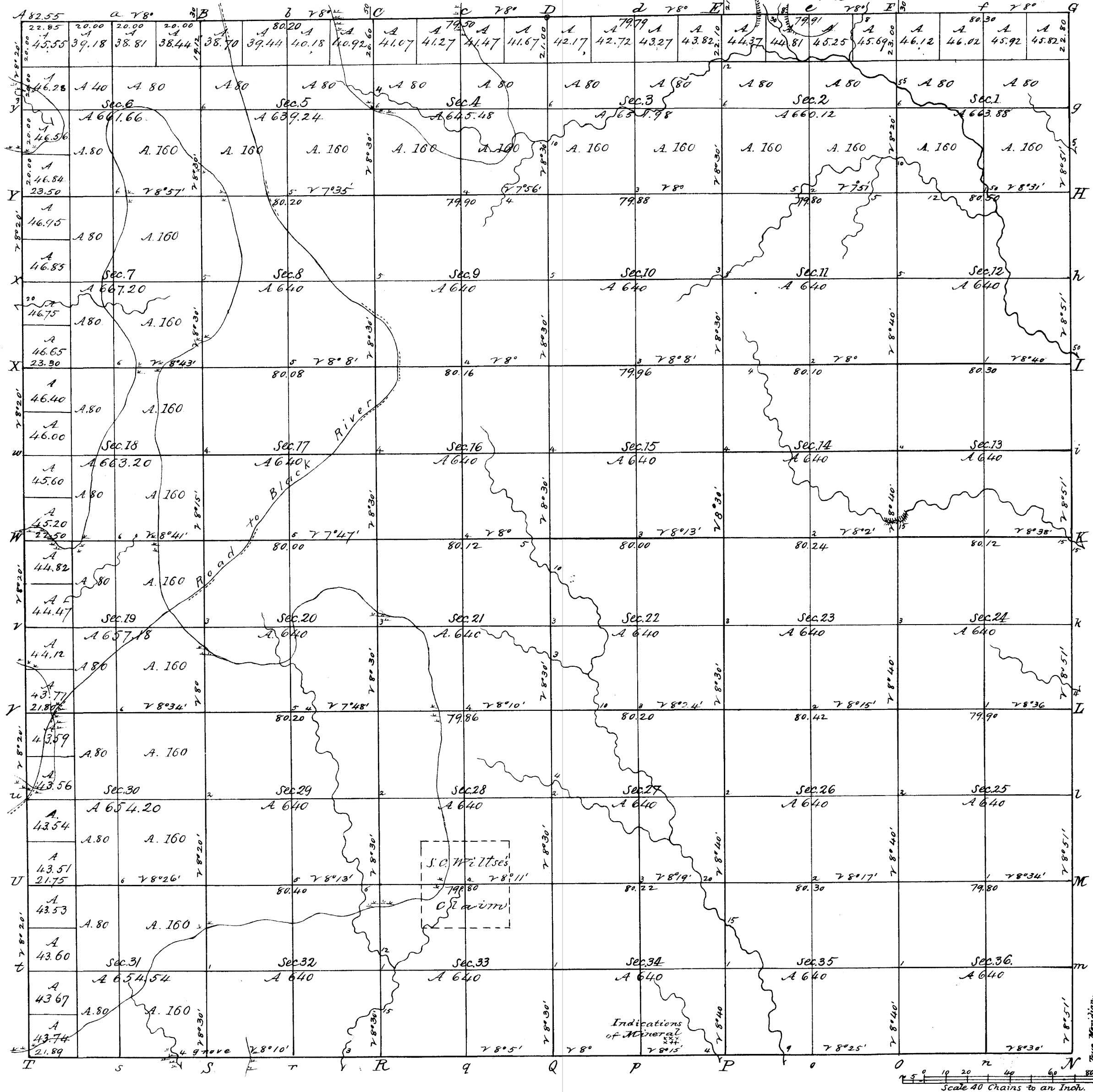


Township No 12 N. Range No 4 West, 4th Mer.

Rec'd with S.G. letter of 22 Sept. 1845



Total number of Acres. 23,218.68

V.33 B.

Surveys Designated	By Whom Surveyed	Date of Contract	Amount of Surveys	When Surveyed	When ^d for and A ^c in the Sur. Gen ^l 's acc ^t
S. Township line	Wm A. Dunt	October 24, 1839	M. Chs Lks 6. 01. 89	January 1840	1 st Qr. 1841
Subdivisions	Saml. D. Dixon	May 15, 1845	60. 18. 67	June 1845	
E. W. & N. Township lines	J. E. Whiteher	November 2 ^d . 1844	18. 05. 35	4 th & 1 st Qrs. 1845	

The above Map of Township No 12 North of Range No 4 West 4th Principal Meridian, Wisconsin Territory is strictly conformable to the field notes of the survey thereof on file in this Office, which have been examined and approved.

Surveyor General's Office,
Dubuque, September 18, 1845

Geo. W. Jones Sur. Genl.