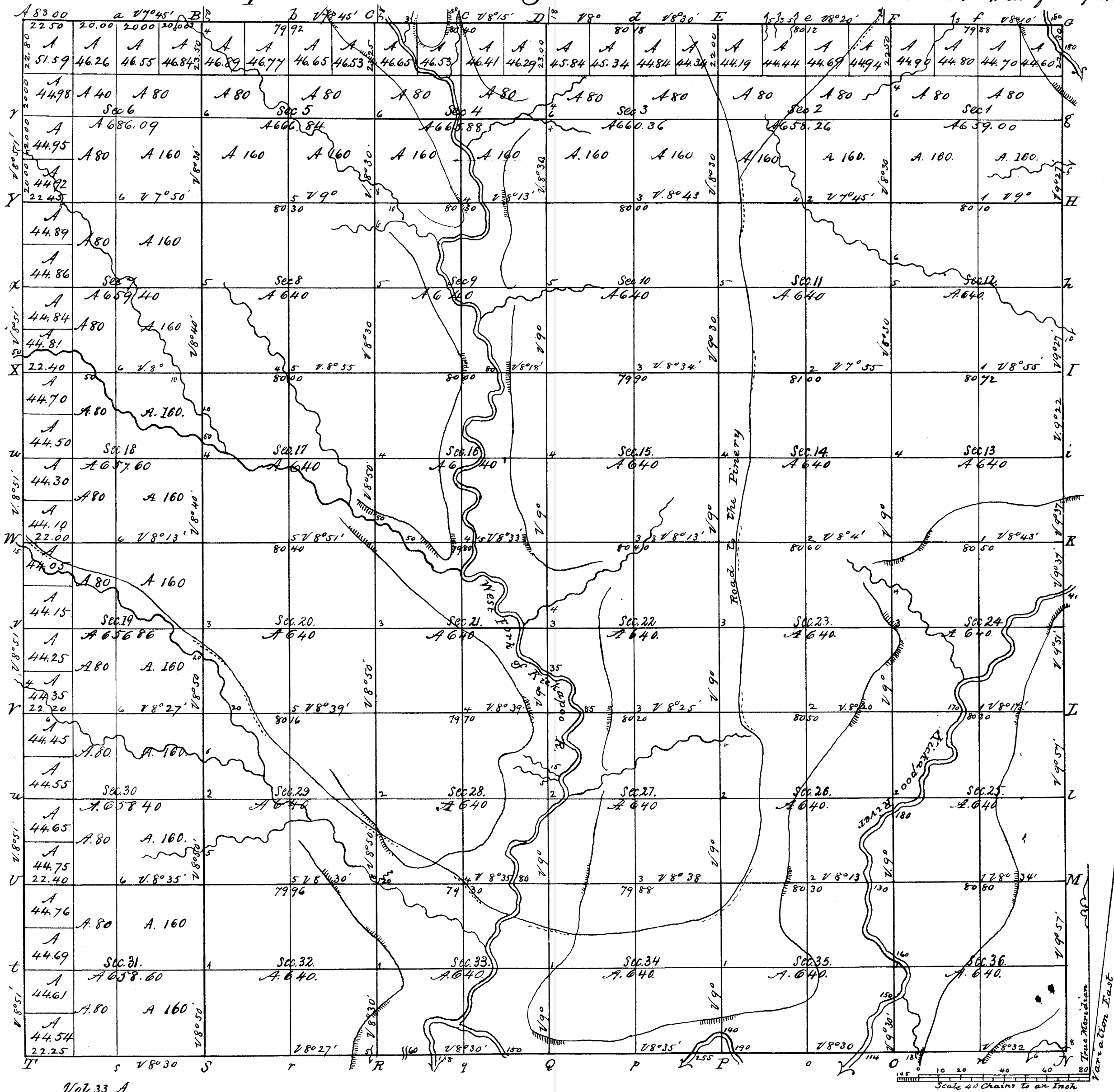


Township N<sup>o</sup> 12 N. Range N<sup>o</sup> 3 West, 4<sup>th</sup> Mer. Recd with S<sup>d</sup> letter of 22 Sept. 1845



Vol 33 A

Total number of Acres 23 287. 23

| Surveys Designated     | By Whom Surveyed | Date of Contract         | Amount of Surveys         | When Surveyed   | Men <sup>rs</sup> for and ch <sup>rs</sup> in the Sur <sup>rs</sup> Gen <sup>ls</sup> acct |
|------------------------|------------------|--------------------------|---------------------------|-----------------|--|
| S Township line        | Wm A Burt        | Oct. 24. 1839            | M ch <sup>rs</sup> 02. 25 | January 1840    | 1 <sup>st</sup> Gr. 1841   |
| Subdivisions           | Saml D. Dixon    | May 15. 1845             | 60. 25. 70                | May & June 1845 |  |
| E W & N Township lines | J. C. Hitchcock  | Nov. 2 <sup>d</sup> 1844 | 18. 08. 10                |                 |  |

The above Map of Township N<sup>o</sup> 12 North of Range N<sup>o</sup> 3 West 4<sup>th</sup> Principal Meridian, Wisconsin Territory is strictly conformable to the field notes of the survey thereof on file in this Office which have been examined and approved

Surveyor General's Office } Geo W Jones Sur<sup>rs</sup> Gen<sup>l</sup>  
 Dubuque September 18. 1845